

FAMILIES TO THE MAX

SigNetwork
Directors Webinar
MAY 7, 2026

Jill Houseal, Regional Family Leaders Council Chair

Nikki Huggan, Regional Family Leaders Council Vice-Chair

Jacqui DiDomenico, F2MAX Parent Partner Coordinator

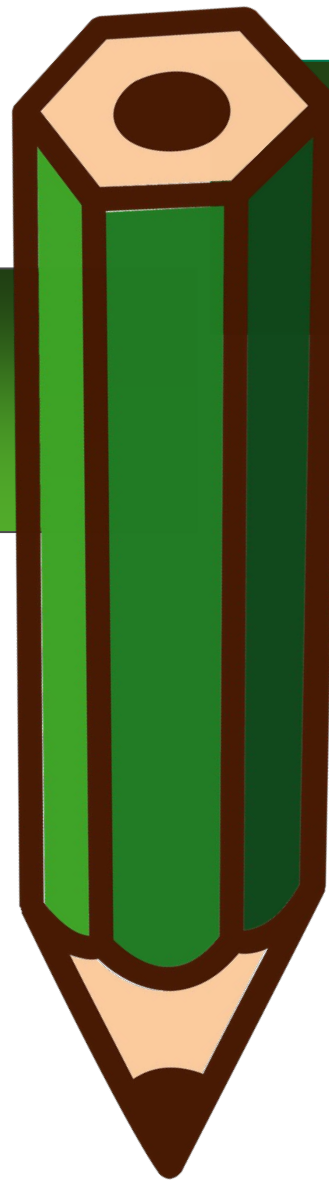
Laura Bray, Special Education Advisor/SPDG Director



F2MAX

Vision

Empower students, families, and communities to believe that all children can reach their maximum potential.



Mission

Leading change for children with diverse needs by maximizing opportunities in the home, classroom, and community.

What is **FAMILIES TO THE MAX**?

FAMILIES TO THE MAX (F2MAX) is the Pennsylvania Statewide Family Network made up of both parents and professionals.

The network came out of an educational initiative based on the idea of presuming competence and fostering high expectations for students of all abilities.

FAMILIES TO THE MAX is a collaboration between Pennsylvania families, individuals, PaTTAN, PEAL and HUNE.



What Are You Looking Forward To?

Sun and Sand

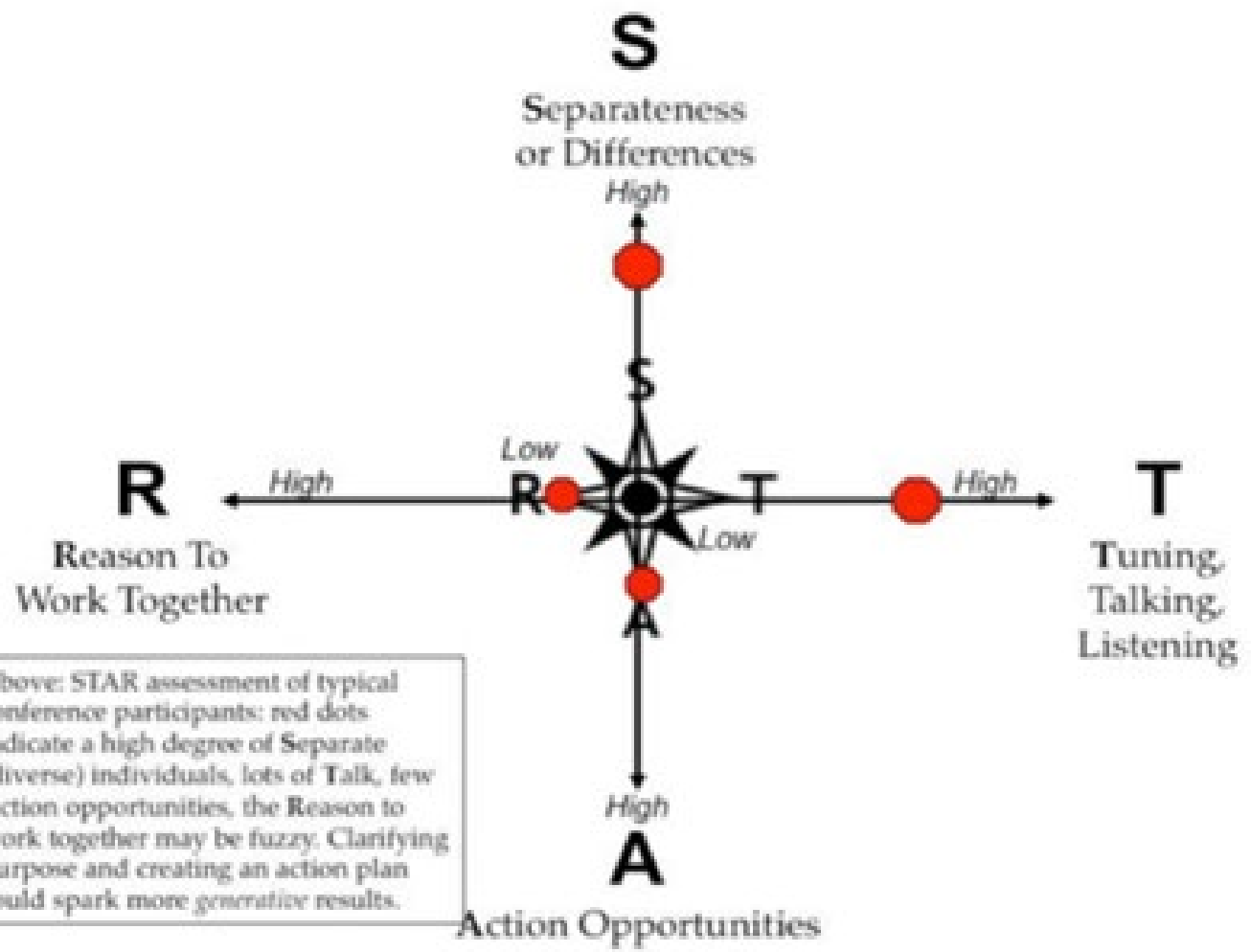


Timber and Trails



RELATIONSHIP BUILDING



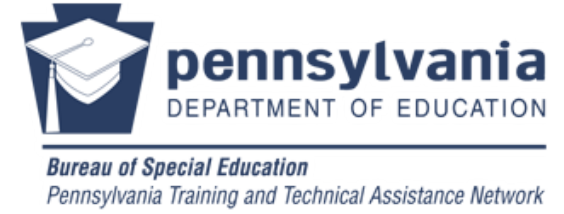


Above: STAR assessment of typical conference participants: red dots indicate a high degree of Separate (diverse) individuals, lots of Talk, few Action opportunities, the Reason to work together may be fuzzy. Clarifying purpose and creating an action plan could spark more generative results.

The Grant Team....



Collaboration



Waterfall Activity

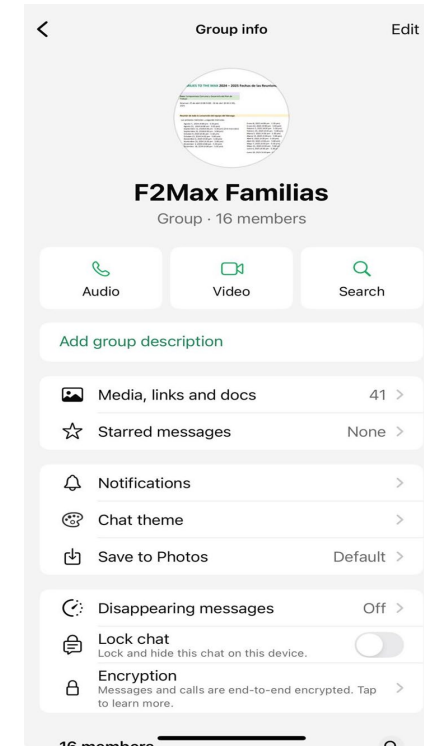


F2MAX Families and Partners



F2MAX Familias

The FAMILIAS A LO MÁXIMO "F2MAX" Hispanic group was formalized and launched the Whatsapp group. They meet twice a month.



Networking and Planning



ALL PLAYERS WORKING TOGETHER



MEASURING SUCCESS



By the Numbers



COLLABORATIVE CHANGE AGENCY



28 FAMILY LEADERS AND PARTNERS WORKING TOGETHER

2012: Four partner organizations united via a Statewide Professional Development Grant to form a statewide family network.

2025: Family-led, partner-supported with nine council family leaders across the Commonwealth lead the F2MAX network as planners, facilitators, communicators, and presenters.

15 COLLABORATIVE AND CONSTRUCTIVE DECISION-MAKING

15 members and partners work together to message why keeping IFSP/IEP teams collaborative and constructive matters and discover existent resources on how to achieve collaborative and constructive IFSP/IEP team meetings

When families and educators work together as collaborative change agents, they create inclusive, equitable learning environments that improve student outcomes, shift school culture, and drive sustainable systems change—particularly for students with disabilities and those historically marginalized. (Henderson & Mapp, 2002; Ishimaru, 2014; Turnbull et al., 2011; Auerbach, 2009)

STATISTICS

- ✓ 2 NATIONAL CONFERENCES
- ✓ 6 STATEWIDE PRESENTATIONS
- ✓ 40 TRAININGS IN ENGLISH AND SPANISH
- ✓ 10 LOCAL LEVEL TRAININGS AND GATHERINGS
- ✓ ANNUAL WORK PLAN FORUM
- ✓ HOSTED MEET AND GREET AT PDE CONFERENCE
- ✓ 40+ RESOURCES CREATED
- ✓ 9 PRESENTATIONS TO COMMUNITY ENTITIES
- ✓ 20 RESOURCE TABLES
- ✓ COALITION BUILDING ACROSS PA

1000+ NETWORK EXPANSION

F2MAX's database grew from 3 to over 820 family and professional members. However, the positive impact on families and their children from F2MAX's stories, training, and resources is unquantifiable.

19 INTENTIONALLY BRIDGING

19 organizations collaborated to address family concerns from a statewide survey, resulting in the Family Ambassador role and the upcoming Resource Repository launch.

3 FAMILY AMBASSADOR

The Family Ambassador role is being piloted after the Statewide Advisory Panel elevated family voice to F2MAX, leading to the creation of the Intentionally Bridging Coalition. This role supports smooth transitions from early intervention to kindergarten and fosters empathy, acceptance, and collaboration in schools through a strength-based approach.

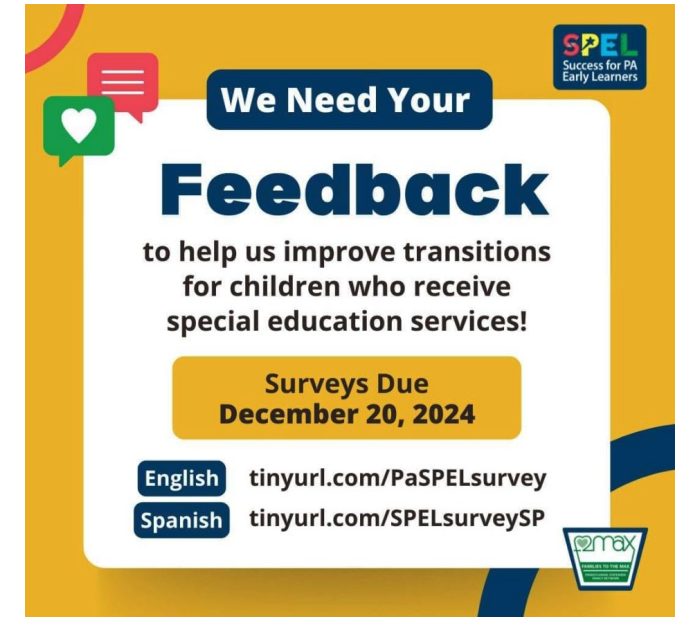


Family Ambassador Pilot Program



Using Data to Inform and Strengthen Family Engagement

- Provided feedback to refine SPDG Family Engagement and Transition survey distributed to families
- Developed and distributed a survey to SPDG teams to support schools with family engagement efforts
 - Collected responses from 16 school teams
 - Partnering with school teams to strengthen family engagement based on identified needs



WORKING TOGETHER



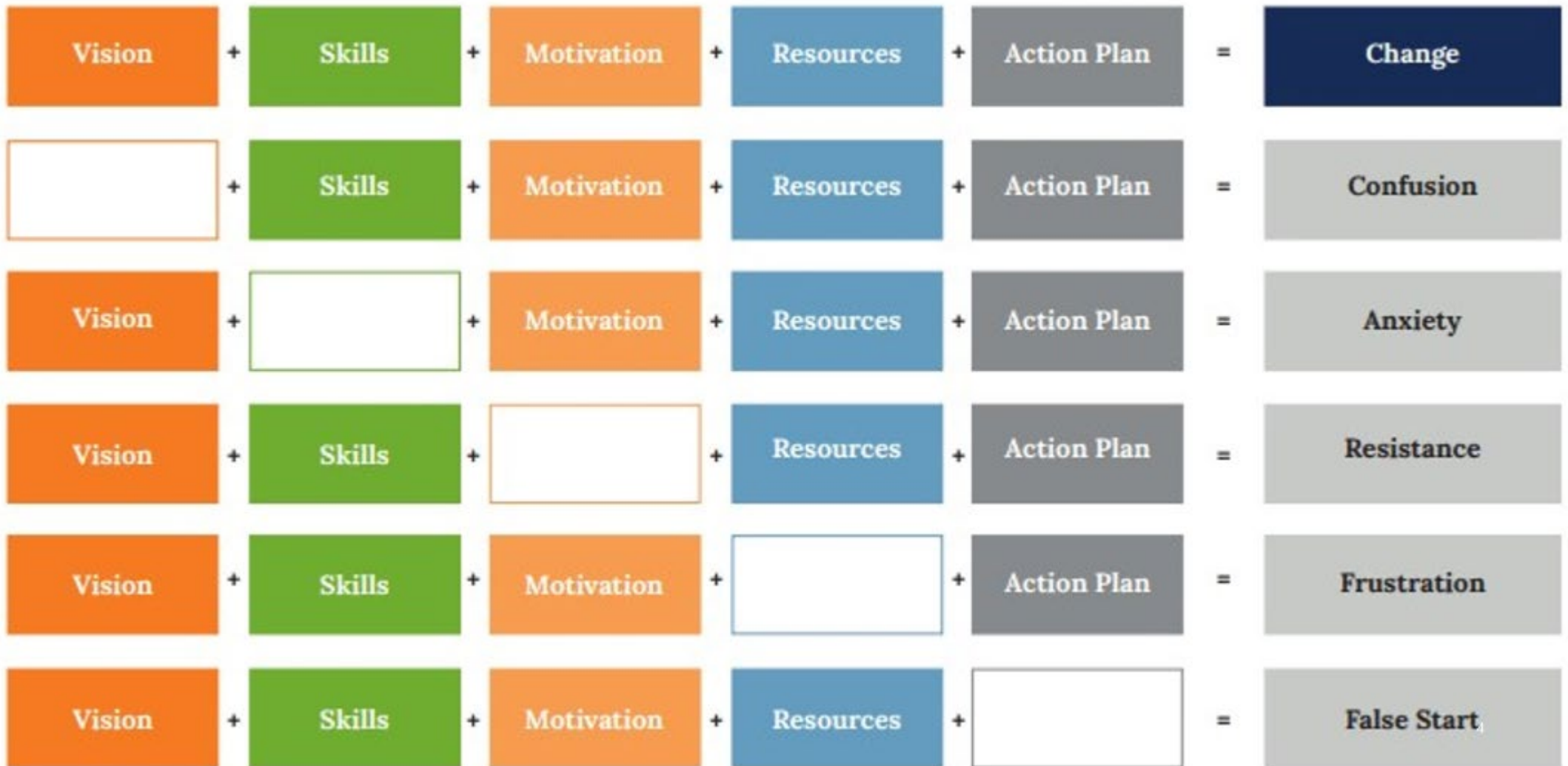




KNOSTER MODEL



Understanding The Knoster Model for Managing Complex Change



Vision

Skills

Motivation

Join at menti.com | use code 9379 2420

What motivates you personally or professionally?

Resources

Action Plan

Change

QUESTIONS ?

ANSWERS !

For more information

Visit:

<http://tinyurl.com/PaF2MAX>



To join the **FAMILIES TO THE MAX** Network,

<https://tinyurl.com/joinf2max>



<https://www.facebook.com/F2MAX>

Contact us: f2max@pattan.net
1-800-441-3215



@families2themax



Commonwealth of Pennsylvania

Josh Shapiro, Governor



La línea de asistencia de
FAMILIAS A LO MÁXIMO
215-595-5866



PEAL 866-950-1040



PaTTAN 800-441-3215