

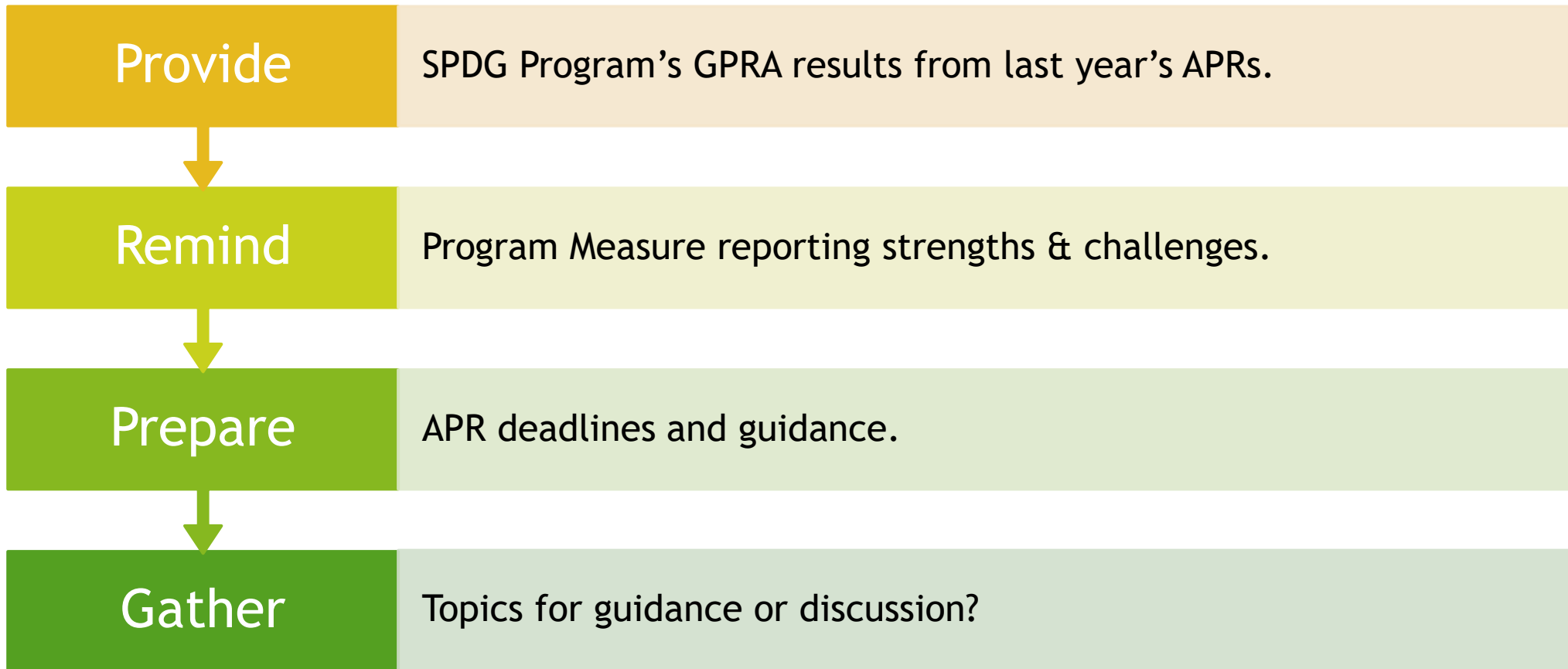


SPDG- Specific APR Guidance

Jennifer Coffey, PhD

January 27, 2026

Purpose of Today's Webinar



Learning Targets



Participants feel prepared to complete the EBPD Worksheet.



Participants will be able to navigate to the Program Measures page to review the APR resources.

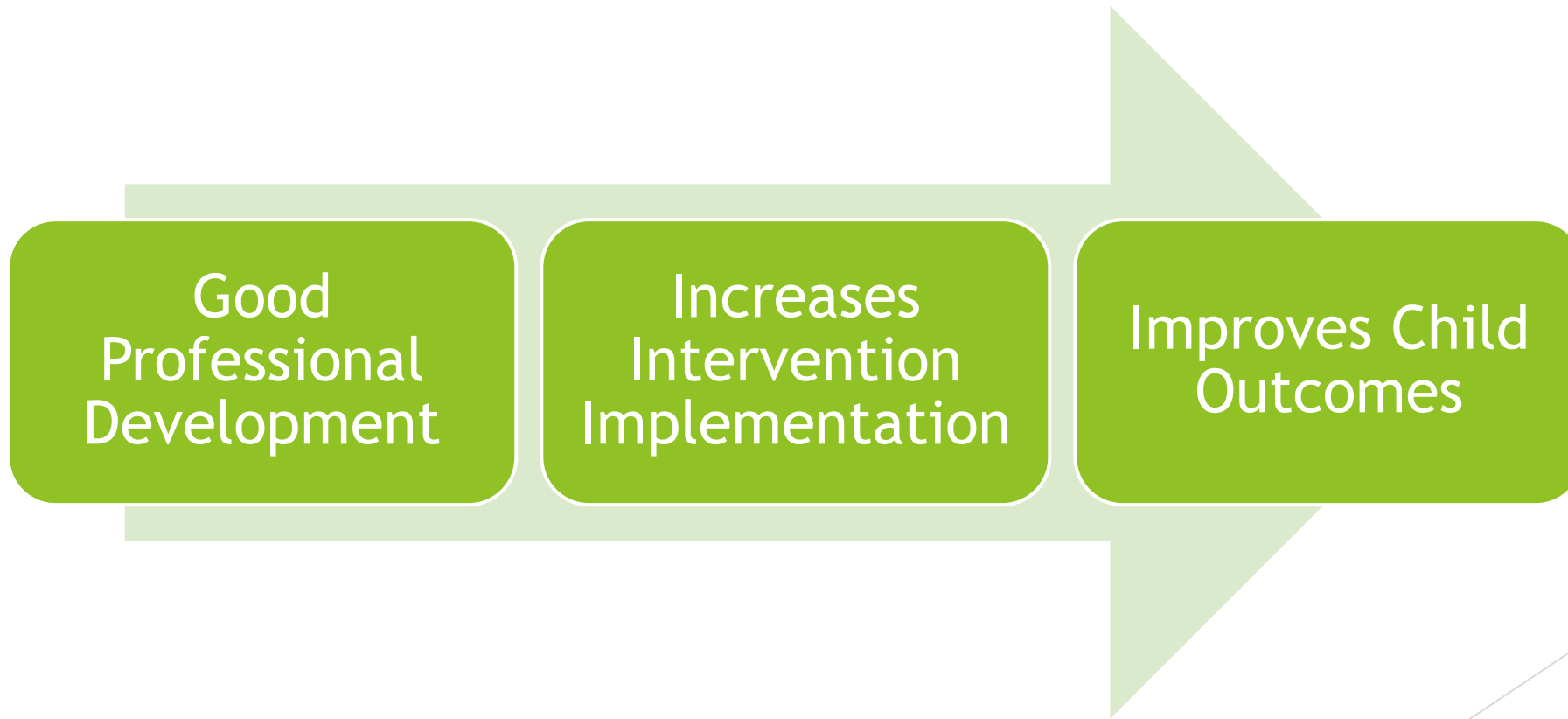
From intentions to actions



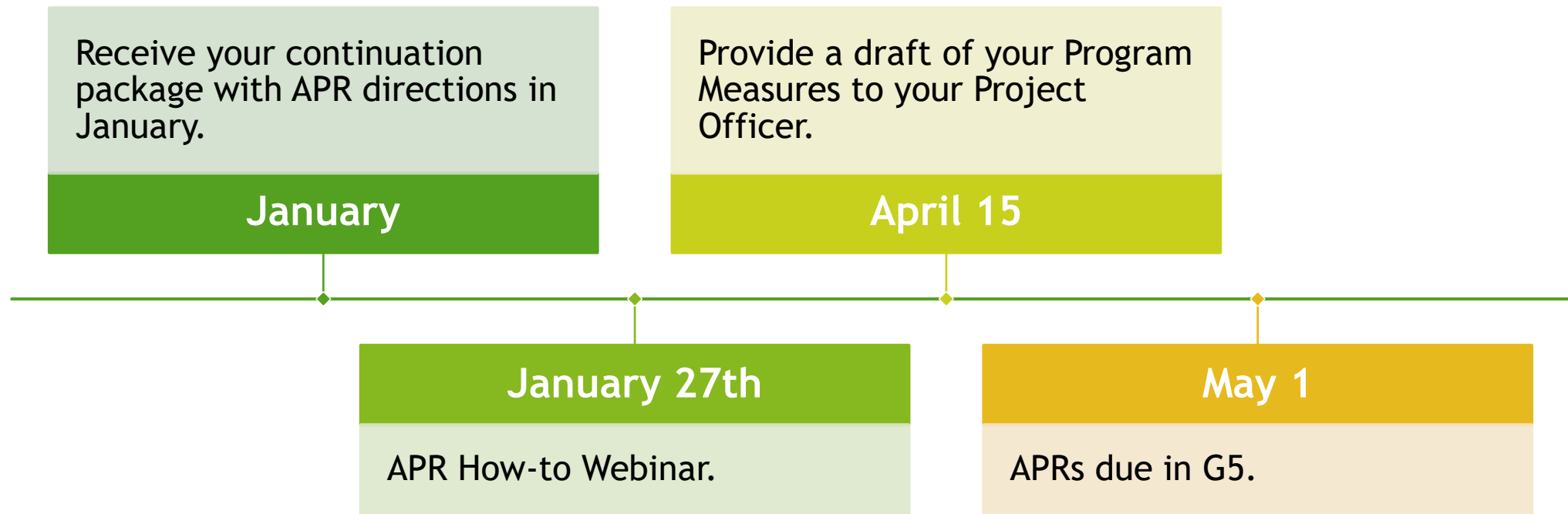
My Intention

You will have a better sense of SPDG-specific expectations and the resources that will help you meet those expectations.

(simplified) SPDG Theory of Action



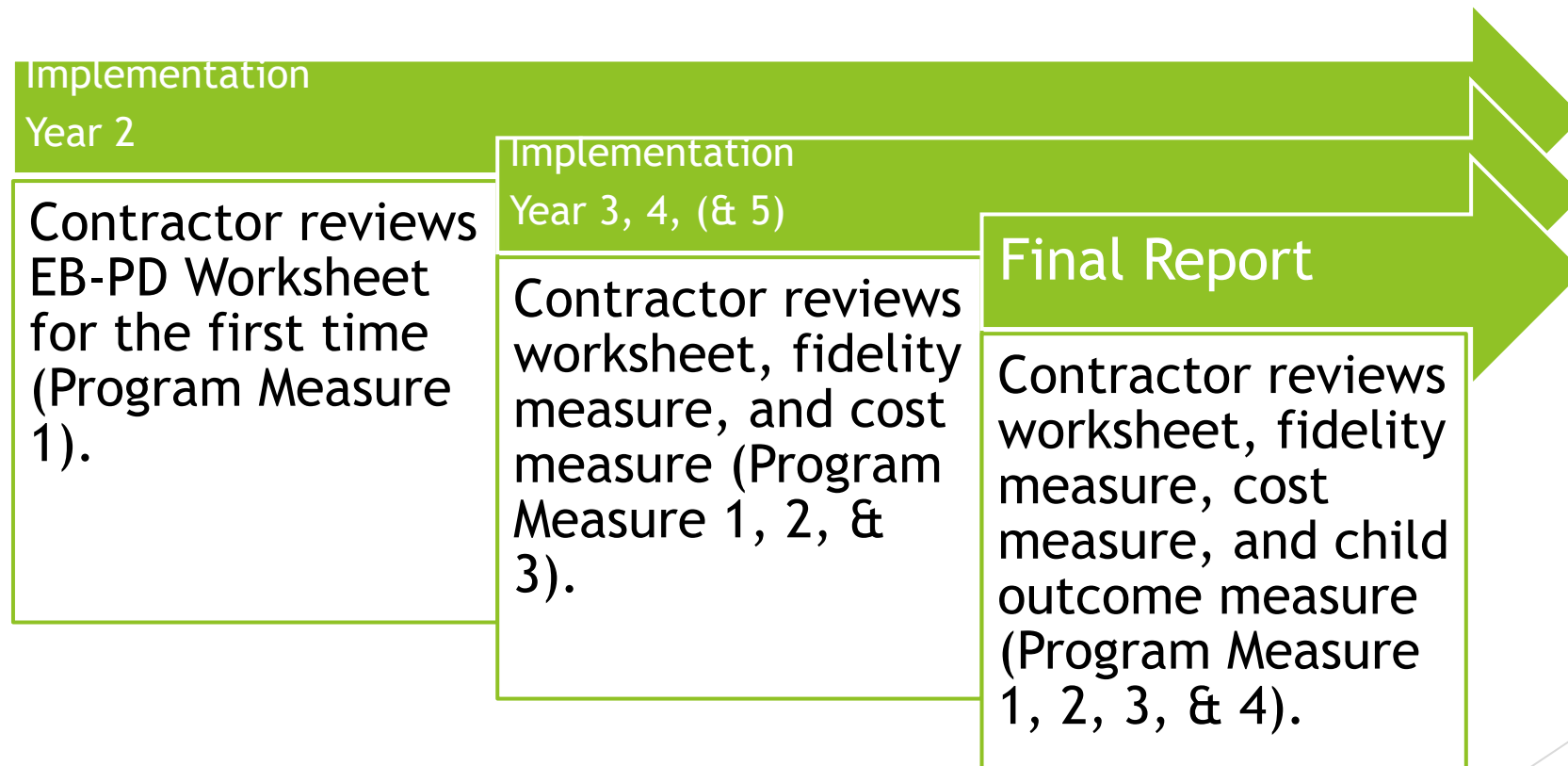
Your APR Calendar (*not for new grantees*)



New Grantees

- ▶ New grantees provide all draft measures to your Project Officer PRIOR to the April 15th program measure submission.
- ▶ Please determine the due date of your first draft with your Project Officer.
- ▶ Keep in mind this is an iterative process.

GPRA CIPP Review Progression





Individual Program Measures



Program Measure 1

Evidence-based Professional Development

2016	70.0	75.0	Target Exceeded
2017	70.0	92.0	Target Exceeded
2018	77.0	82.8	Target Exceeded
2019	82.0	68.7	Did Not Meet Target
2020	85.0	81.3	Target Not Met, but Improved
2021	85.0	81.5	Target Not Met, but Slightly Improved
2022	82.0	88.5	Target Exceeded
2023	82.0	88.0	Target Exceeded
2024	82.0	84.4	Target Exceeded
2025	82.0	95.8	Target Exceeded
2026	82.0		

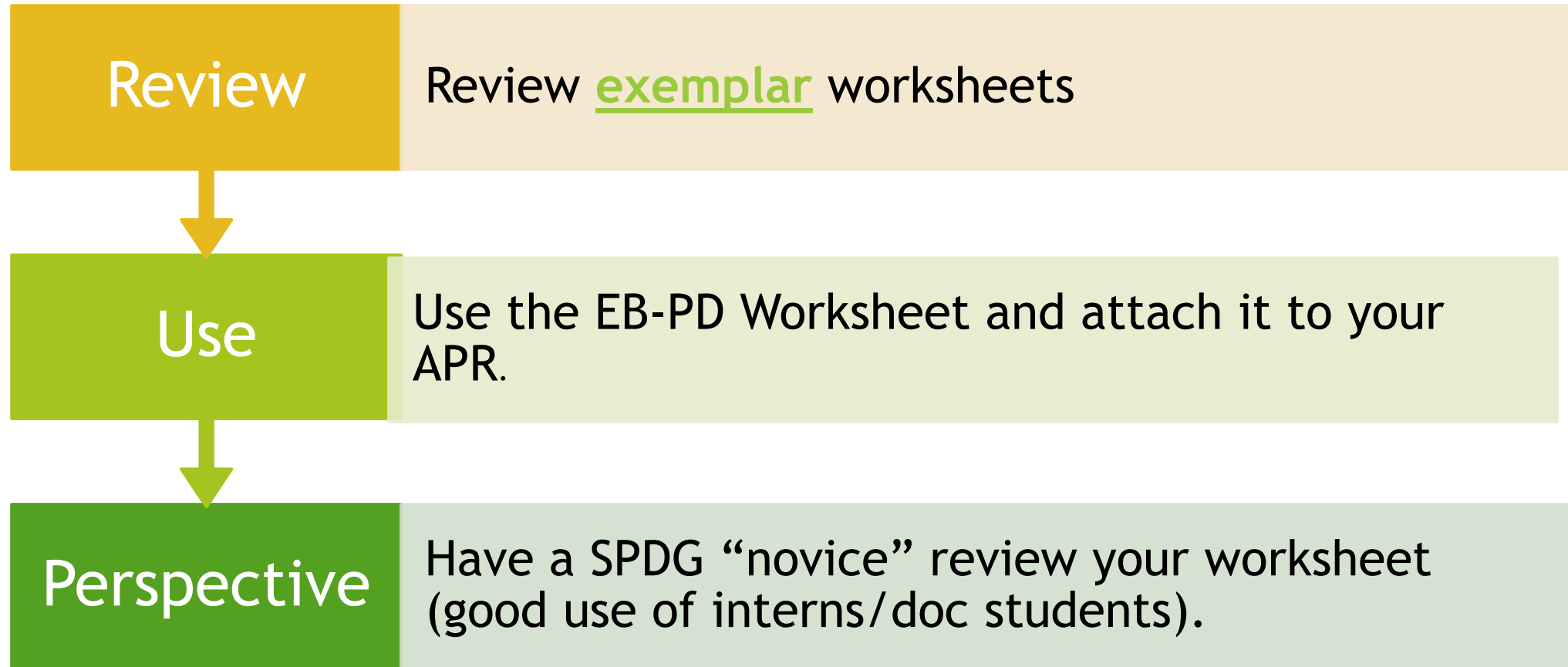
Initiative	Met Target	
	Yes	No
Implementation Year 2 (8 initiatives)	8	0
Implementation Year 3 (5 initiatives)	5	0
Implementation Year 4 (5 initiative)*	4	1
Implementation Year 5 (1 initiative)	1	0
Implementation Year 6 (1 initiative)	1	0
Implementation Year 7 (4 initiatives)	4	0
Total (24 initiatives)	23	1
%	95.8%	4.2%

Number of Initiatives Reviewed
for Each Implementation Year

Selection		Training						Coaching			Performance assessment					Support	
A1	A2	B1	B2	B3	B4	B5	B6	C1	C2	C3	D1	D2	D3	D4	D5	E1	E2
0	0	0	0	0	0	0	0	0	0	0	0	0	1	0	0	0	0
1	2	0	1	1	2	2	3	1	3	2	1	1	0	0	0	0	0
17	17	6	13	16	17	18	15	11	15	17	10	19	20	3	1	20	18
5	4	17	9	6	4	3	1	11	5	0	12	3	2	1	3	3	5

Rubric A Results

Completing your EB-PD Worksheet





Program Measure 1 Survey

We appreciate your
feedback!

Survey Questions

1. Who from your team completes the EBPD Worksheet?
2. What is your state's process for completing the EBPD? (Check all that apply)
 - ▶ We start in January or Early February
 - ▶ We Start and finish the EBPD close to the due date
 - ▶ One person completes the EBPD and seeks feedback from multiple stake holders
 - ▶ It is completed by a group, we each take a part and complete that
 - ▶ It is completed by the SEA and reviewed by our external evaluator.
3. What do you wish would be changed about the EBPD? (Write answer in the chat)



Program Measure 2: Improving Implementation

The percentage of Special Education State Personnel Grant funded Initiatives that meet benchmarks for improvement in implementation of SPDG-supported practices over time.

2016	60.0	74.0	Target Exceeded
2017	60.0	72.0	Target Exceeded
2018	65.0	54.5	Target Not Met
2019	65.0	48.0	Target Not Met
2020	70.0	60.0	Target Not Met, but Improved
2021	70.0	59.3	Target Not Met
2022	60.0	48.0	Target Not Met
2023	60.0	70.6	Target Exceeded
2024	60.0	50.0	Target Not Met
2025	60.0	64.7	Target Exceeded
2026			

Initiative	Met Target	
	Yes	No
Implementation Year 3 (5 initiatives)	2	3
Implementation Year 4 (5 initiative)	4	1
Implementation Year 5 (2 initiatives)	1	1
Implementation Year 6 (1 initiatives)	1	0
Implementation Year 7 (4 initiatives)	3	1
Total (17 initiatives)	11	6
%	68.8%	31.2%

Considerations



Be clear about the fidelity measure you used.

How will the reviewers know it's a fidelity measure?



If your fidelity measure is a self-assessment, describe 20% external observation reliability check, if possible.

If it's not a self-assessment make that clear in your description.



Setting next year's targets... are your targets appropriate?

For Program Measure 2, **fidelity** measures an intervention, practice, or program experienced by the child/student.

- ▶ For instance, a SPDG is using a multi-tiered system of support (MTSS) that is focused on reading. Read180 is the program being used to teach reading.
- ▶ The SPDG should use a fidelity measure that captures personnel use of Read180.
 - ▶ A measure of MTSS implementation fidelity (*i.e., district and school level process support*) is still critical for the project and should be reported as a project measure.

Intervention Fidelity

Program Measure 2 Example

A SPDG is implementing MTSS and each site is choosing the content focus (i.e., behavior, reading, math).

- ▶ Systems are a big part of MTSS. The systems and procedures are in service of using evidence-based literacy practices.
 - ▶ The team processes may be the **implementation fidelity measure** reported as a **Project Measure**.
- ▶ Systems vs. Interventions
 - ▶ The fidelity measure you use for Program Measure 2 should determine the fidelity with which “interventions” are being used.
 - ▶ In this case, are classroom literacy practices being used with fidelity?
 - ▶ Fidelity data can then be reviewed alongside student outcome data.

Fidelity Requirements & Strategies

- ▶ Program/GPRA measure has changed to “intervention fidelity.” This means the intervention that is expected to improve outcomes for children with disabilities.
- ▶ Strategies for data collection:
 - ▶ Sampling
 - ▶ Determining common essential features across different interventions
 - ▶ Determining benchmarks across different types of measures and reporting the percentage of sites that met their benchmarks?
- ▶ What other strategies can you think of?



Setting Targets

- ▶ Challenging but achievable
- ▶ Analyzing your history and the outcomes other initiatives are experiencing.
- ▶ Set the target for your out-years
 - ▶ Work with your Project Officer
 - ▶ Targets can be changed

Reliability Check

Only for fidelity measures that are “self-assessments”



20% reliability check conducted by someone not involved in the day-to-day of the work



Be clear regarding:

- Is it a self-assessment?
- If yes, who did the reliability check and what are they considered and “outside observer”



Questions about Program Measure 2?



Program Measure 3

The percentage of Special Education State Personnel Grant-funded initiatives that meet targets for the use of funds to sustain SPDG-supported practices.

2016	85.0	78.0	Target Not Met
2017	85.0	83.0	Target Not Met
2018	85.0	89.7	Target Exceeded
2019	85.0	100.0	Target Exceeded
2020	85.0	93.8	Target Exceeded
2021	85.0	81.5	Target Not Met
2022	85.0	88.5	Target Exceeded
2023	85.0	84.0	Target Not Met
2024	85.0	87.5	Target Exceeded
2025	85.0	80.0	Target Not Met
2026			

Initiative	Met Target	
	Yes	No
Implementation Year 2 (8 initiatives)	8	0
Implementation Year 3 (5 initiatives)	4	1
Implementation Year 4 (5 initiative)	4	1
Implementation Year 5 (2 initiatives)	0	2
Implementation Year 6 (1 initiatives)	1	0
Implementation Year 7 (4 initiatives)	3	1
Total (25 initiatives)	20	5
	80.0%	20.0%



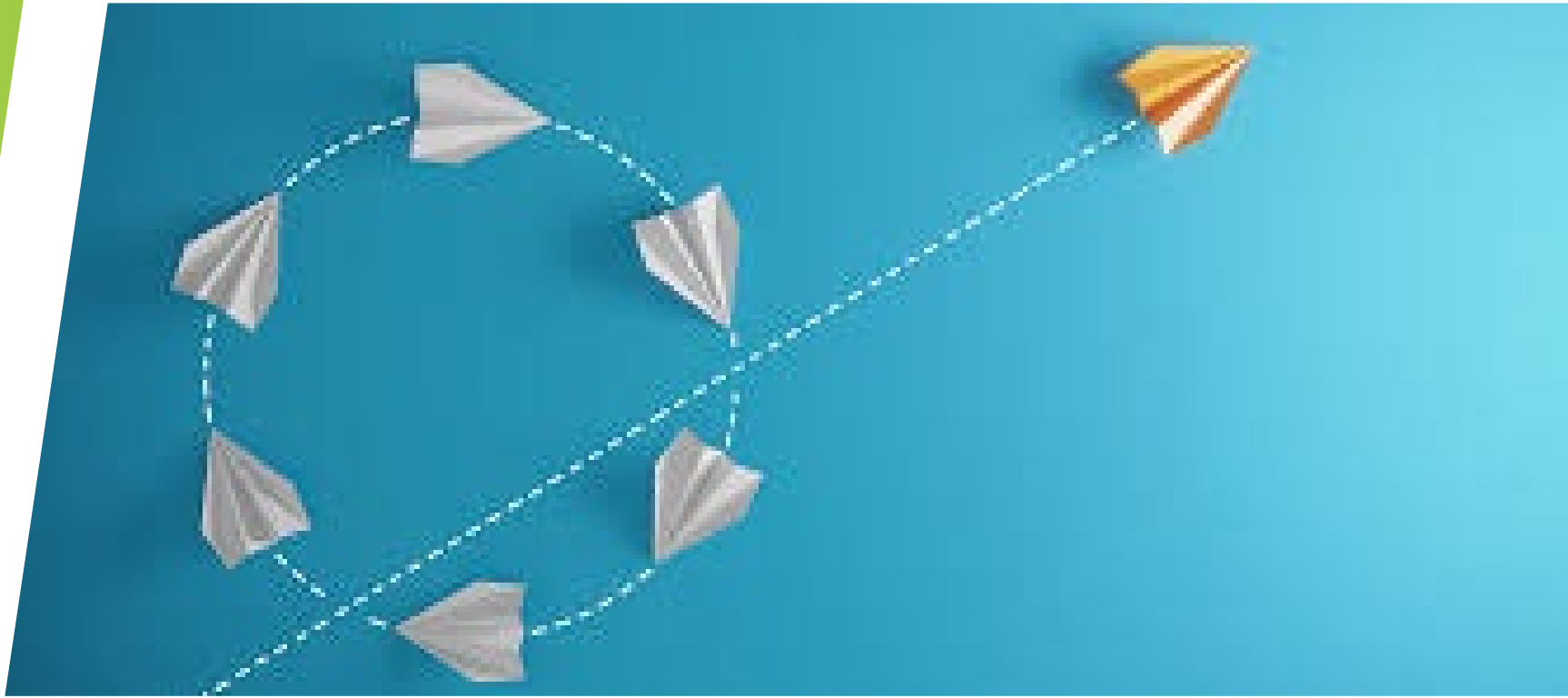
Program Measure 4

The percentage of State Personnel Development Grant-funded initiatives that meet their child outcome targets.



Steps for Program Measure 4

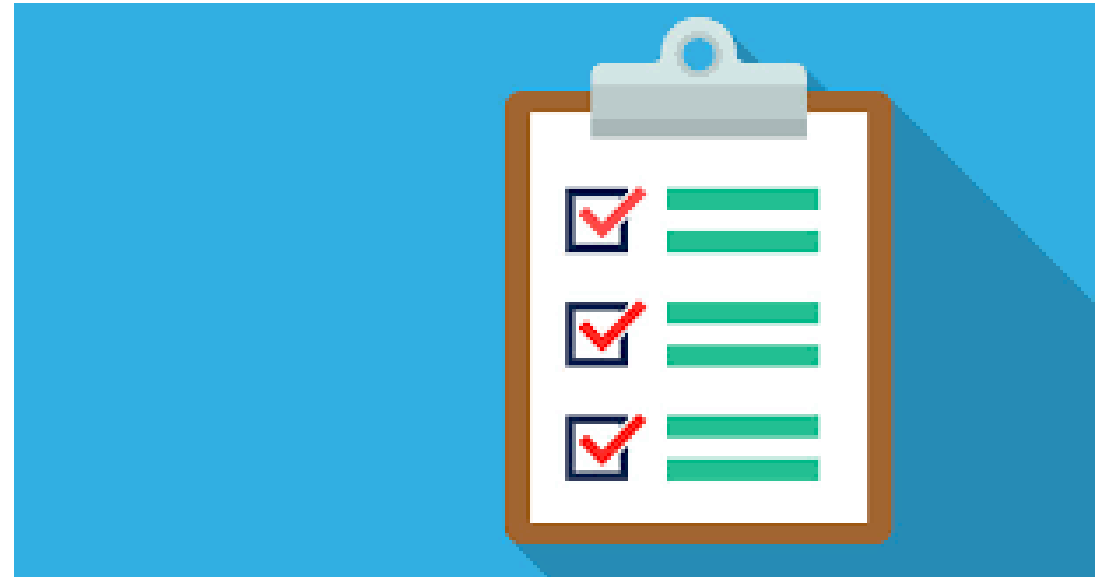
- ▶ If you have not already, determine a child outcome measure that is a direct result of your intervention.
- ▶ Collect baseline/ongoing data.
 - ▶ Set initial targets for each year.
 - ▶ Each year, determine if the targets still seem reasonable.
- ▶ CIPP, our GPRA contractor, will use the data from your final report.
- ▶ *Note that you can have only one Program Measure 4 per initiative.*



Considerations, Resources, & Your
Questions

Rubric B & APR Fillable Form

- ▶ [Rubric B \(DOC\)](#)
- ▶ [APR Fillable Form \(PDF\)](#)



Large Available Balances (LAB)



You will receive an email if you have a large available balance (*LAB = >70% of your annual budget*)



You may need to complete the SF-424 financial form and attach it to your APR in G5.



Note that the financial form is shown for every grantee, but only those who are notified must include it with their APR.



In APR Section B, please provide a strong description of reasons you have not been able to spend down your funds and your plans to do so going forward.