

IDENTIFYING SOURCES OF DATA FOR MEASURING COACH EFFORTS AND EFFECTS

Patricia Snyder, Darblanne Shannon
University of Florida

Kiersten Kinder
Vanderbilt University

Presentation for the State Personnel Development Programs
Project Director's Webinar – July 10, 2025



1

The contents of this presentation were developed in part under a grant from the Department of Education. However, the contents do not necessarily represent the policy of the Department of Education, and you should not assume endorsement by the Federal Government.

Practice-based Coaching Data-Informed Decision Making™ model demonstration project funded by the Office of Special Education Programs (Project Number: H326M200021, Project Officer: Anita Vermeer)



UF | **Anita Zucker Center**
for Excellence in Early Childhood Studies



2

ACKNOWLEDGEMENTS

PBC-DIDM TEAM

- Patricia Snyder
- Maureen Conroy
- Darblanne Shannon
- Jennifer Harrington
- Mary Louise Hemmeter
- Sarah Basler
- Kiersten Kinder

A BIG THANK YOU TO OUR DEMONSTRATION SITES:

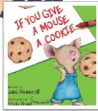
California 1 SELPA and COE Head Start grantee
1 large urban school district

Florida 2 regional early intervention programs

Tennessee 1 Head Start grantee
1 State-level CCR&R

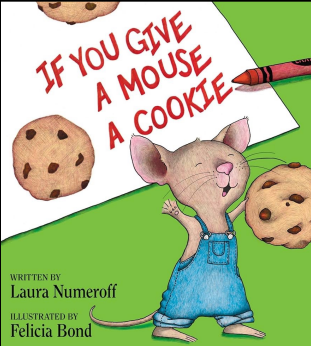


3

Patricia Snyder	Darbianne Shannon	Kiersten Kinder
		
		




4

	WHAT ELSE MIGHT STATE LEADERS WANT TO KNOW ABOUT COACHING DATA ???
	Was <u>coaching available</u> to support job-embedded use of the practices learned?
	Was the professional learning aligned with the effective or high-leverage practices?
	What professional learning supported the teacher/practitioner?
	What did the teacher/practitioner do to support the student/child?
	Student/Child Outcomes Data

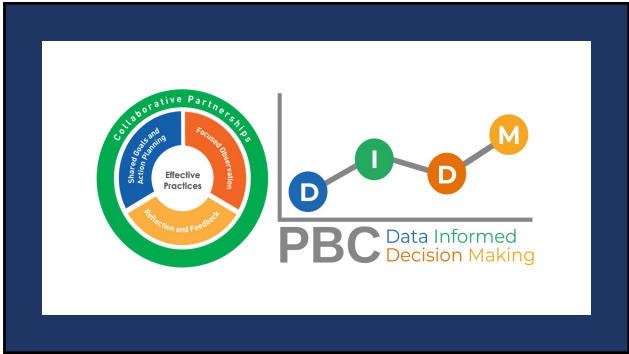
5

AFTER TODAY, YOU WILL

- Know the parts of the PBC-DIDM Model
- Differentiate between effort data and effect data
- Understand how effort and effect data are connected in a "cascading" effort and effect framework within your state
- Identify sources of effort and effect data connected to professional learning and coaching in your SPDG



6



7



Look & Think



Connect to your state



Reflect & Write



Share

WHAT BEST DESCRIBES THE COACHING ACTIVITIES IN YOUR SPDG?

PBC Data Informed Decision Making

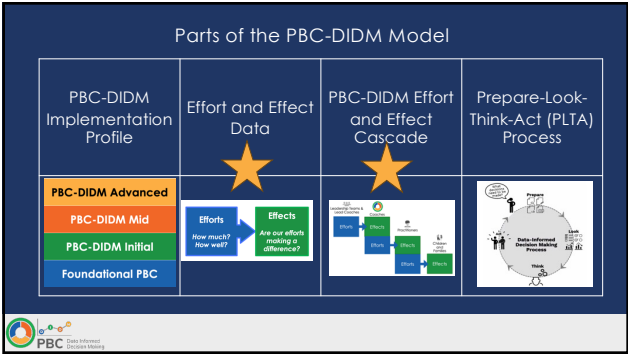
8

Structures that Facilitate PBC-DIDM Success!

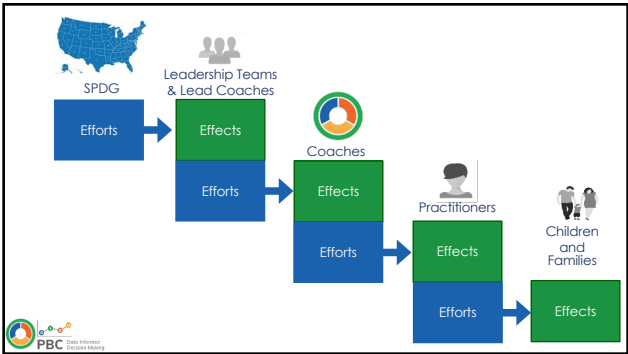
Leadership Team	Lead Coach(es)	Coach Community	PBC Cycles
			

PBC Data Informed Decision Making

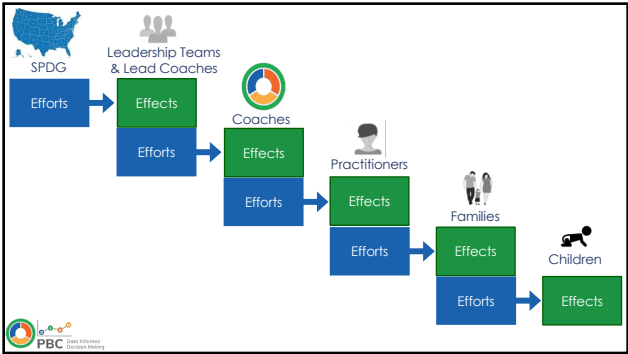
9



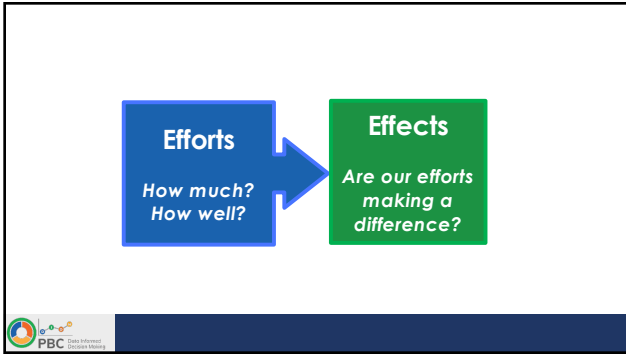
10



11



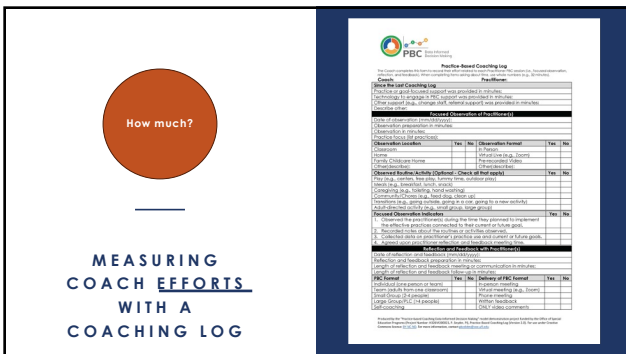
12



13



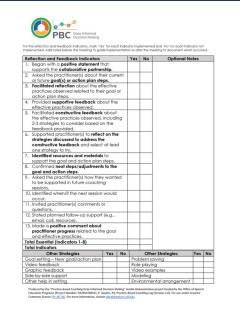
14



15


How well?

MEASURING
COACH EFFORTS
WITH
COACHING LOGS




16


HOW ARE YOU MEASURING THE EFFORTS OF COACHES IN YOUR SPDG?




Look & Think




Connect to your state



Reflect & Write



Share



17

Efforts

How much?
How well?



Effects

Are our efforts making a difference?



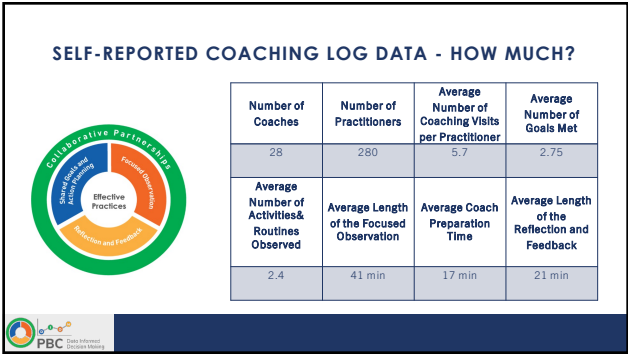
In collaboration with the Leadership Teams & Lead Coaches, what data is your SPDG collecting?



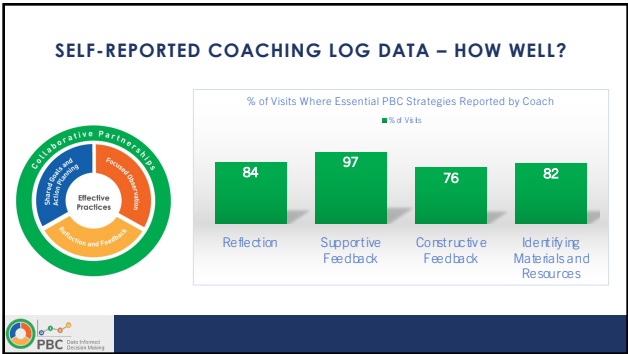
Coaches



18



19



20



21



22

SPDG & PROGRAM SPECIFIC LEADERSHIP EFFORTS TO SUPPORT COACHES	
INITIAL	ONGOING
<ul style="list-style-type: none">• PBC Workshop• Effective Practices Workshop• Coaching Log• Coach Manual• Job-Aides	<ul style="list-style-type: none">• Lead Coach who coaches other Coaches• Video-based feedback• Community of Practice

23

IDENTIFYING SOURCES OF EFFORT AND EFFECT		
Event	What do we want to measure? What decision are we trying to make?	Sources
PBC Workshop (Effort)	Was the content covered as intended?	Implementation Checklist – content indicators
PBC Workshop (Effort)	How much time will it take to train a new coach?	Implementation Checklist – duration of workshop
PBC Workshop (Effort)	Did all the coaches receive the workshop content?	Attendance
PBC Workshop (Effect)	Were coaches satisfied with workshop content and activities?	Participant evaluation or survey
PBC Workshop (Effect)	Are coaches using what they learned about PBC?	Self-report coaching log data
	Are coaches implementing PBC as intended or with fidelity?	Video-based observation of a coaching meeting rated using a coaching log

24

WHAT DATA ARE YOU COLLECTING ABOUT SPDG AND LEADERSHIP EFFORTS TO SUPPORT COACHES?



Look & Think



Connect to your state



Reflect & Write



Share



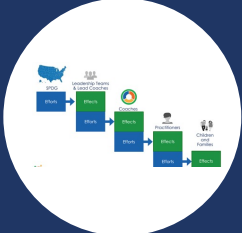
25

SCENARIO 1

The SPDG and Program Leadership Team would like to gather information about **coaches' efforts** to support these effects:

1. Practitioners' use of effective practices
2. Child/Family outcomes

What data might be most helpful to gather information about coach efforts?

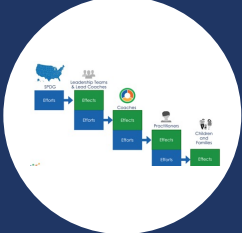


26

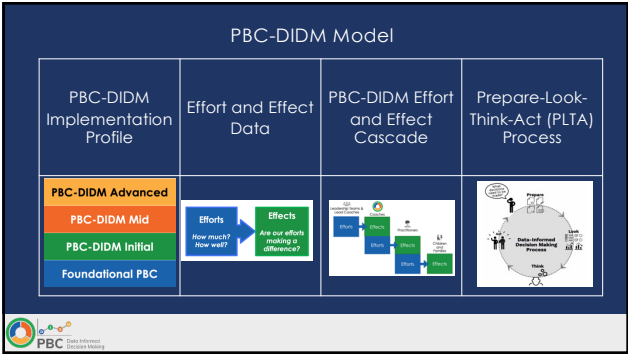
SCENARIO 2

The SPDG and Program Leadership Team is trying to make decisions about their **efforts** to support coaches through a professional learning day.

What data might be most helpful to determine the content focus of the coaches' professional learning day?




27



28

THANK YOU!

QUESTIONS?




Practice-Based Coaching
Data-Informed Decision Making

Using data to inform decisions and enhance outcomes for teachers, practitioners, children, and families.

Website: pbcdidm.com

Email: pbcdidm@coe.ufl.edu

 PBC

29
