

At the NEXIS: Improving schools for students through statewide collective educator efficacy

Who is PLL?

Mission: Partnerships for Literacy and Learning is committed to bringing the power of literacy to all students through partnerships with organizations and educators. We are dedicated to building expertise so that students pre-grade 12 develop complex reading, writing, and critical thinking skills for personal and civic engagement throughout their lives.

Vision: PLL envisions nothing less than effective schools, expert educators, and equitable outcomes that lead to productive citizens and literacy for all people to enrich their lives and communities.

What is NEXIS?

To support schools and districts through cycles of continuous improvement, we created Networks For Excellence in Schools (NEXIS). NEXIS is an improvement science program where educators participate in a network intended to bolster individual school progress and leverage collective efficacy to improve outcomes for all students. This poster will share successes and opportunities we encountered while creating a statewide networked improvement community from the ground up.

Our Aim:

POP: The pandemic exposed inequities within our educational settings and created a renewed emphasis on VTmtss. This reality reveals a need for a deeper systemic understanding of and a stronger collective expertise on the comprehensive and interrelated nature of the components of the established VTmtss framework.

Aim: Equitably implement VTmtss Framework through thoughtful reflection and informed action to fully support all students in achieving challenging goals.

"MTSS IS school."

Implementing VTmtss for equity and sustainability

Leveraging assets and identifying issues to improve educational systems that support

positive outcomes for ALL students

"Meaningful progress always takes time."



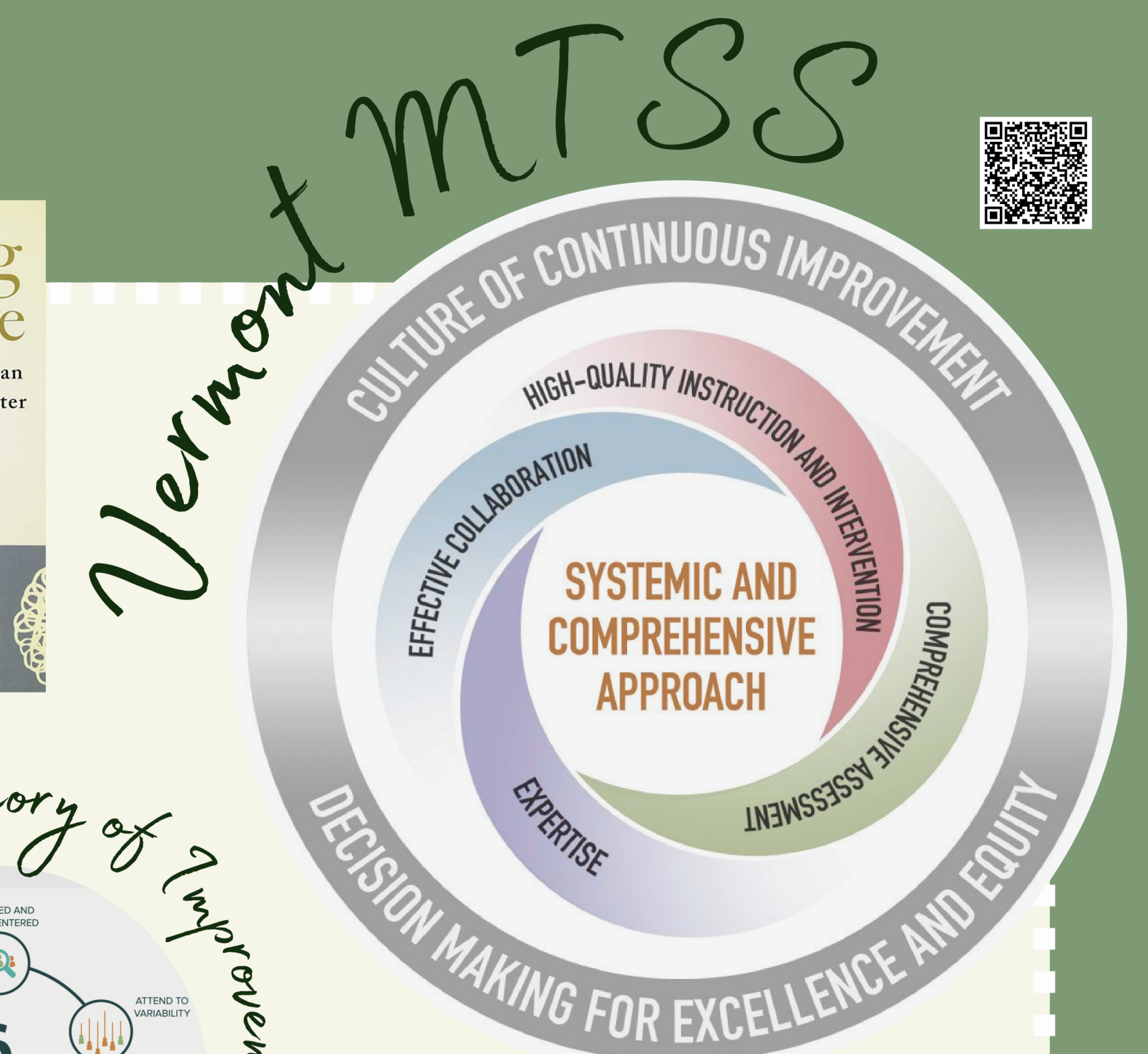
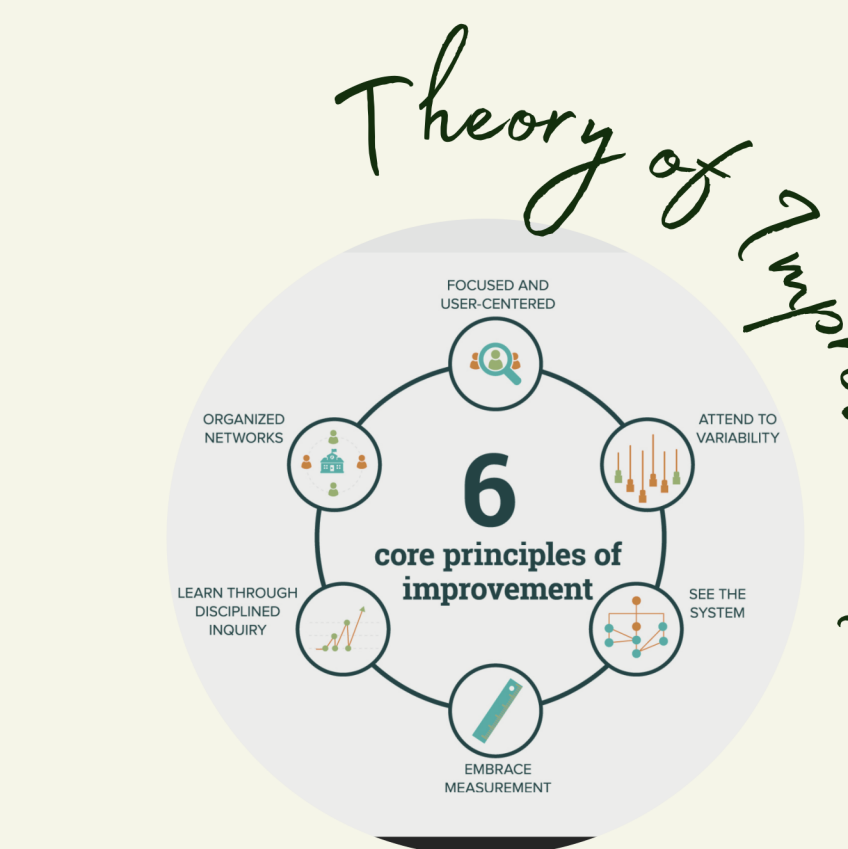
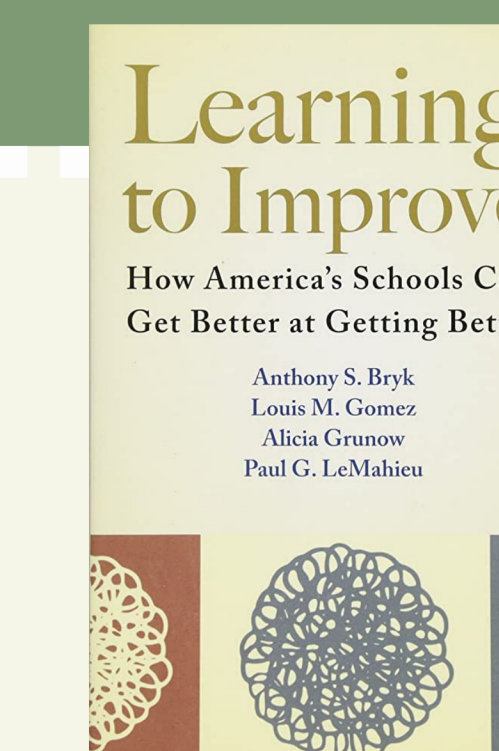
Building a culture of collective efficacy

"NEXIS was invaluable. It was so helpful to see the commonalities between schools/districts as we try to tackle MTSS and get ideas about specific details that are working at different schools... we will be able to use this process to help us frame our learning as we work on the steps and forms in our systems."

continuous improvement

Our Process:

Participants in the NEXIS assessed the aim using quantitative and qualitative methods, collected and analyzed data on the effectiveness of and depth of knowledge surrounding their MTSS systems, and developed a path to measurable and equitable change.



"MTSS knowledge, shared systems materials and strategies like PDSA cycles to move forward with our action planning were essential!"

Our Data:

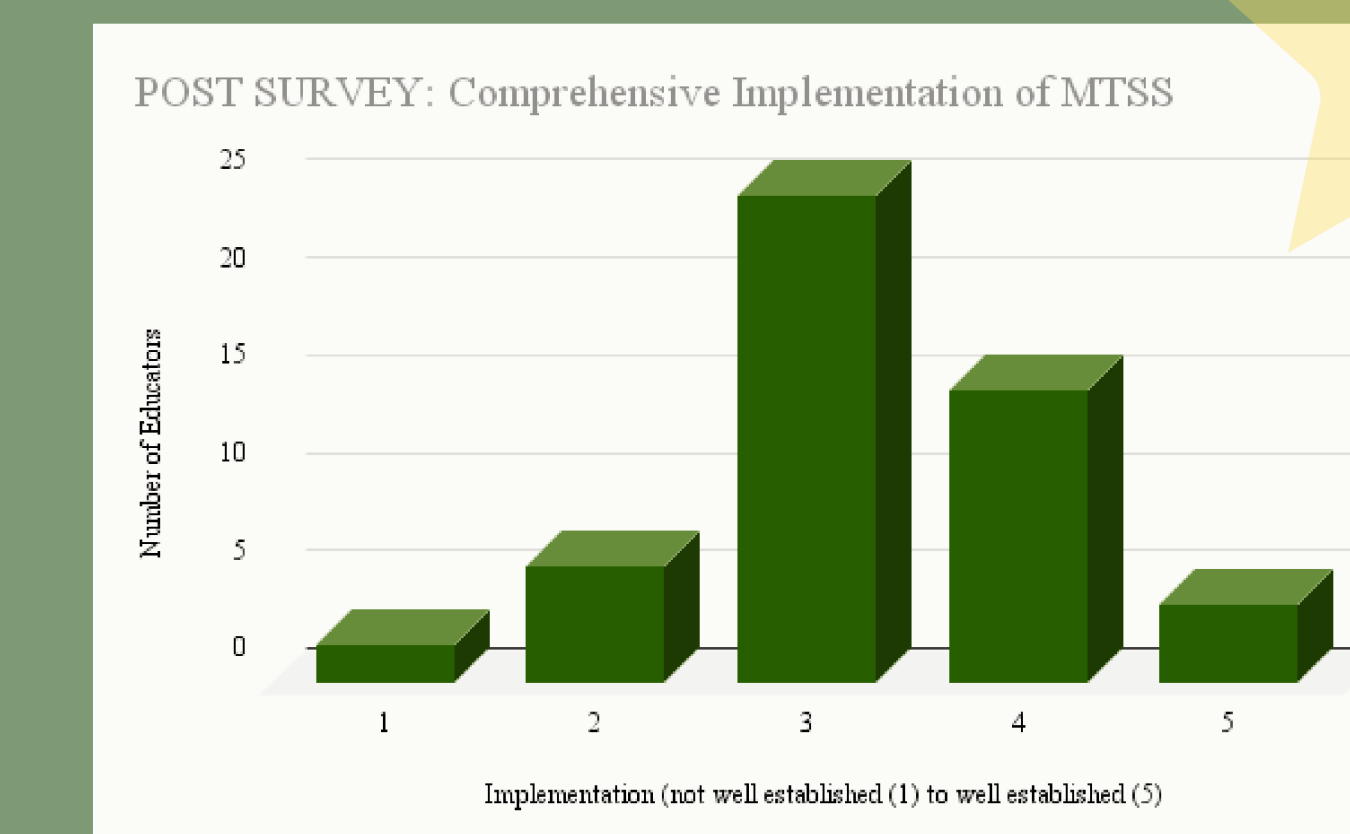
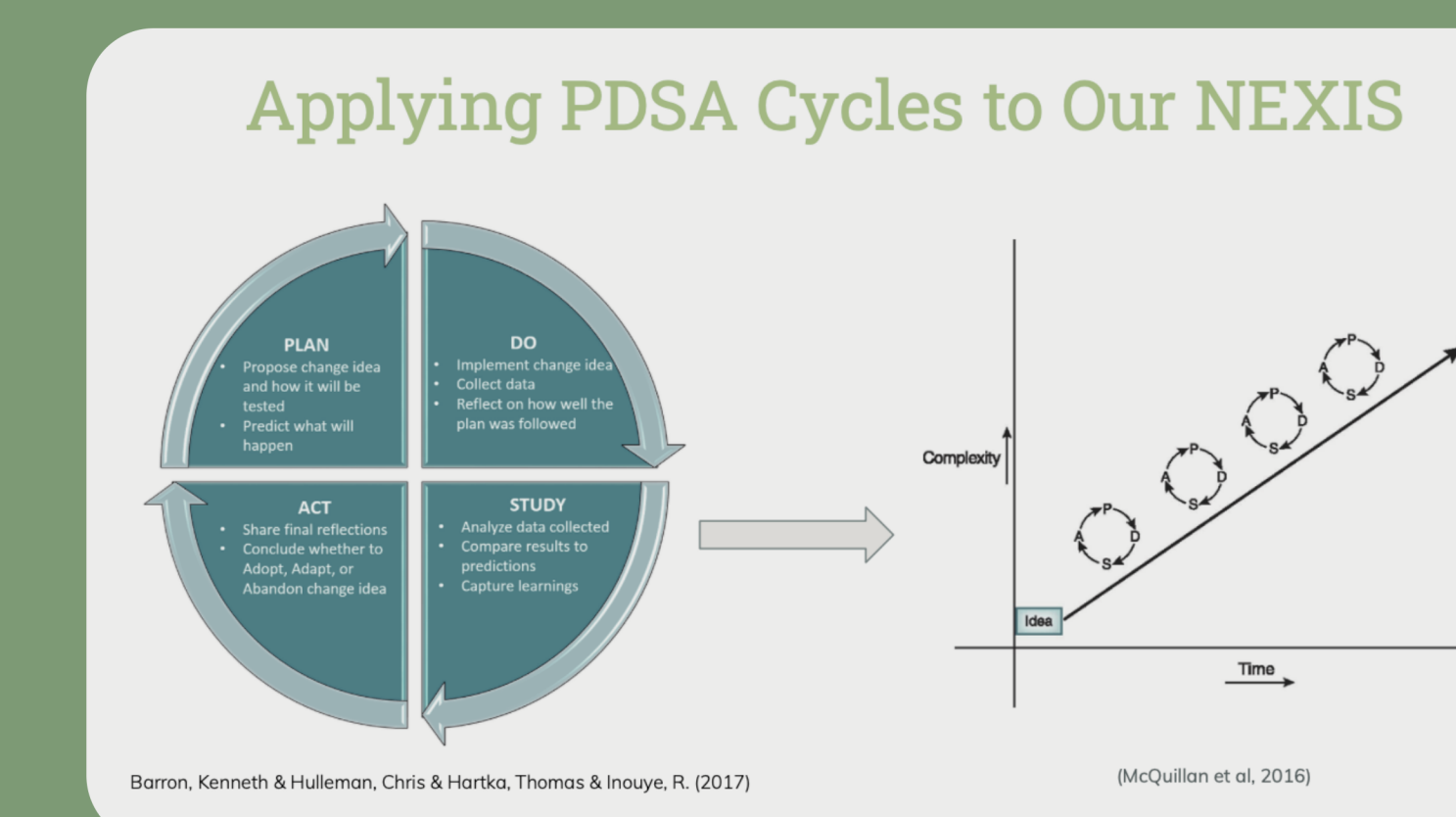
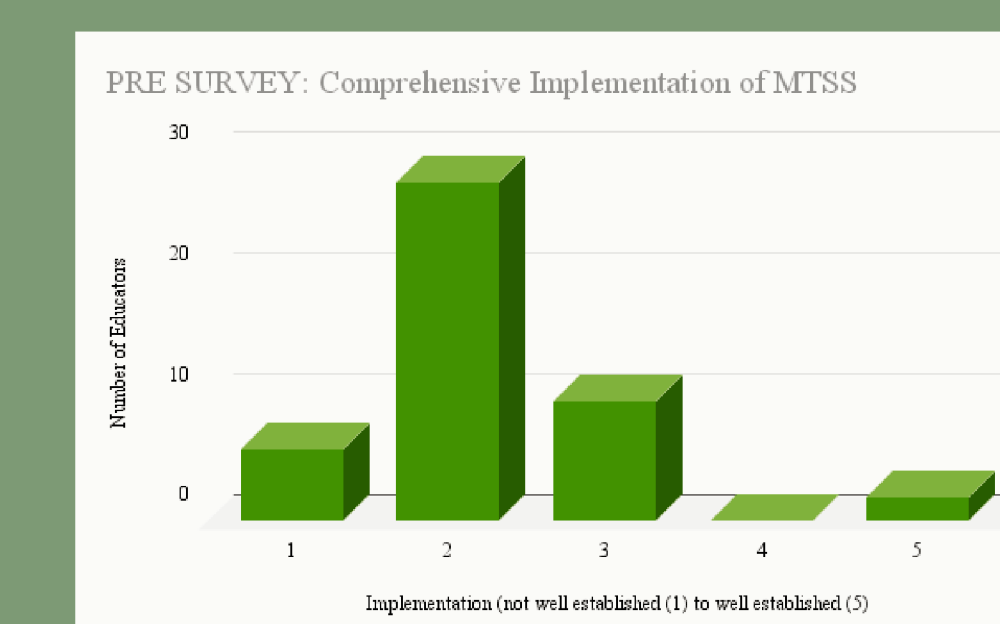
35 schools

45% positive change in confidence

102 participants

18 Vermont districts

10 NEXIS PDSA groups



Our Learning:

The district data revealed that districts needed to improve student literacy scores as well as focus on building foundational knowledge and culture around MTSS. We collected programmatic data on the global health, connectivity, and results through surveys, exit tickets, and reports. We used this data to ensure that the efforts of the network were supporting the needs and growth of the schools and districts.

essential lessons

- Lesson 1:** Get clear on your school/district vision and your commitment to equity to create a culture of comprehensive support.
- Lesson 2:** Build your foundational knowledge! MTSS has been around for over a decade but we still struggle to build a knowledge base or put it into action in schools.
- Lesson 3:** Identify and leverage your assets and issue. Looking at our own systems critically is tough and can feel unwieldy.
- Lesson 4:** Look at your data. We need different kinds of data to show us what the realities are. Without this how can we even start?
- Lesson 5:** Build your MTSS for Sustainability. MTSS implementation for equity takes FOCUS, TIME, and PATIENCE. MTSS is not a 6-week cycle. It is a sustained iterative process with many embedded cycles that requires constant, consistent care and is likely to take at least 5 years to get up and running!

* Speech bubbles represent qualitative data from NEXIS participants