

GPRA RESULTS AND STRATEGIES THAT WORK

Fidelity Friday

December 6, 2024



AGENDA

Wisdom from the Fidelity Group

Strategies that Work

Previous Fidelity Friday Learnings

What will you do with this information?

GPRAs Results

What is the low hanging fruit?

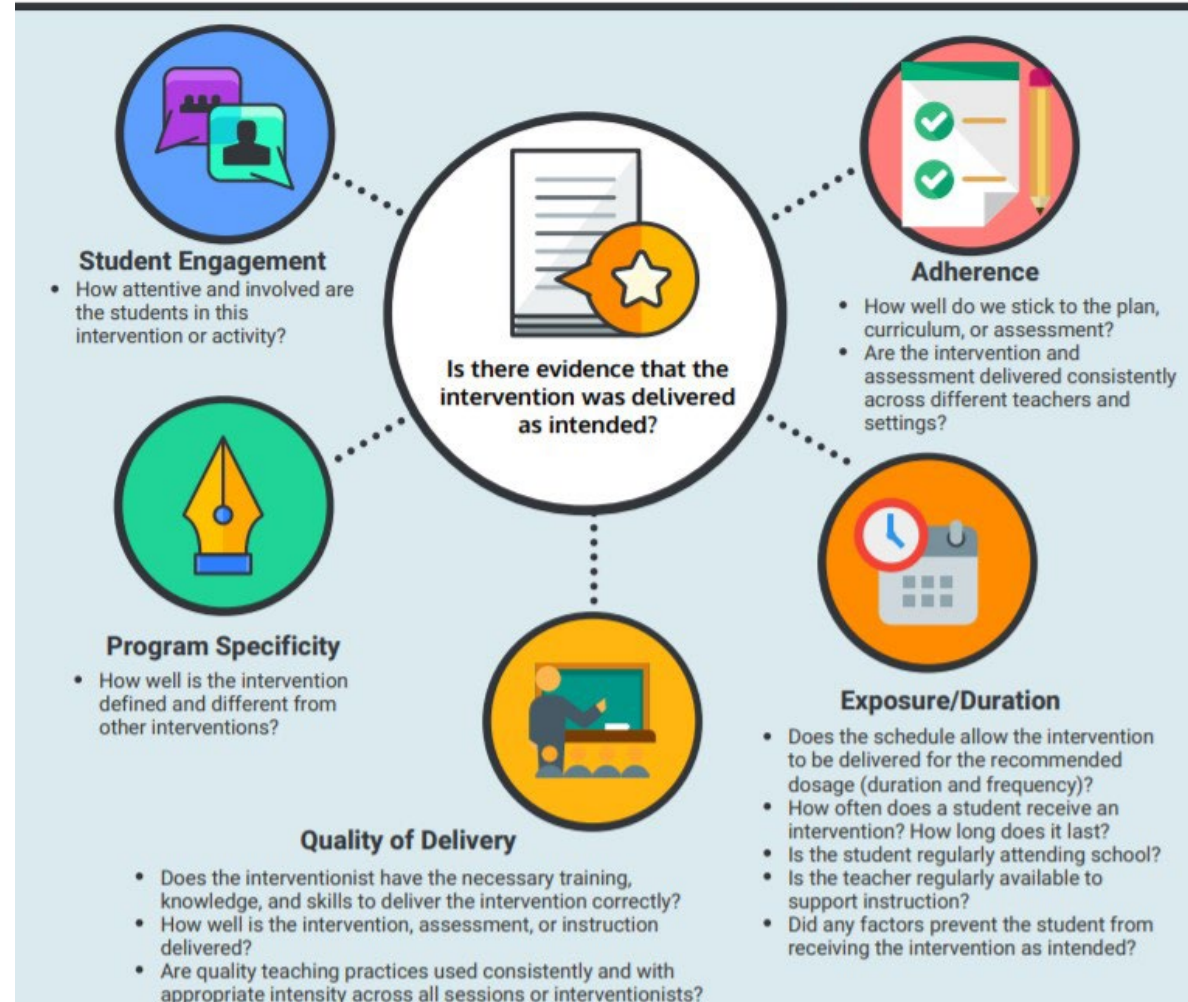
ELEMENTS OF FIDELITY

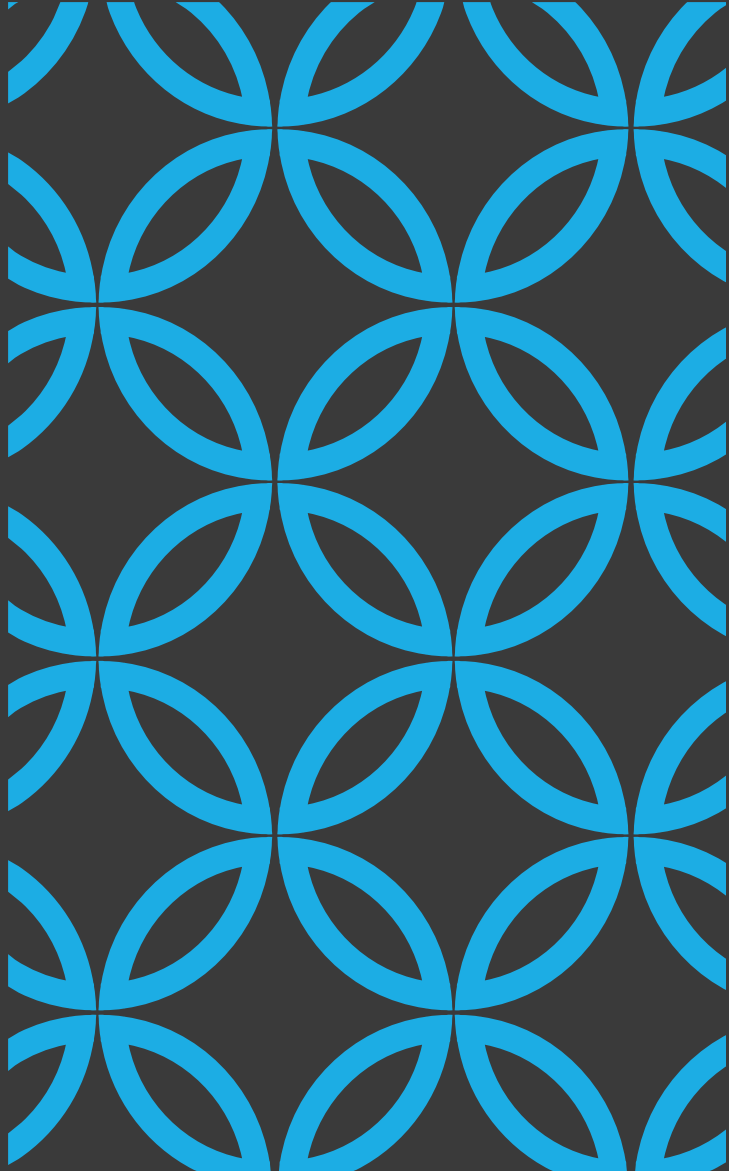
What order of importance do you think your SPDG places these elements?

What are you doing well in?

What area needs a little TLC?

Considerations for Effective Implementation 5 Elements of Fidelity





PREVIOUS LEARNINGS

Motivation

Student engagement

Collaborating with teachers to create
the measure

Connecting to Student Outcomes

FIDELITY CHALLENGES



MOTIVATION AND
COGNITION



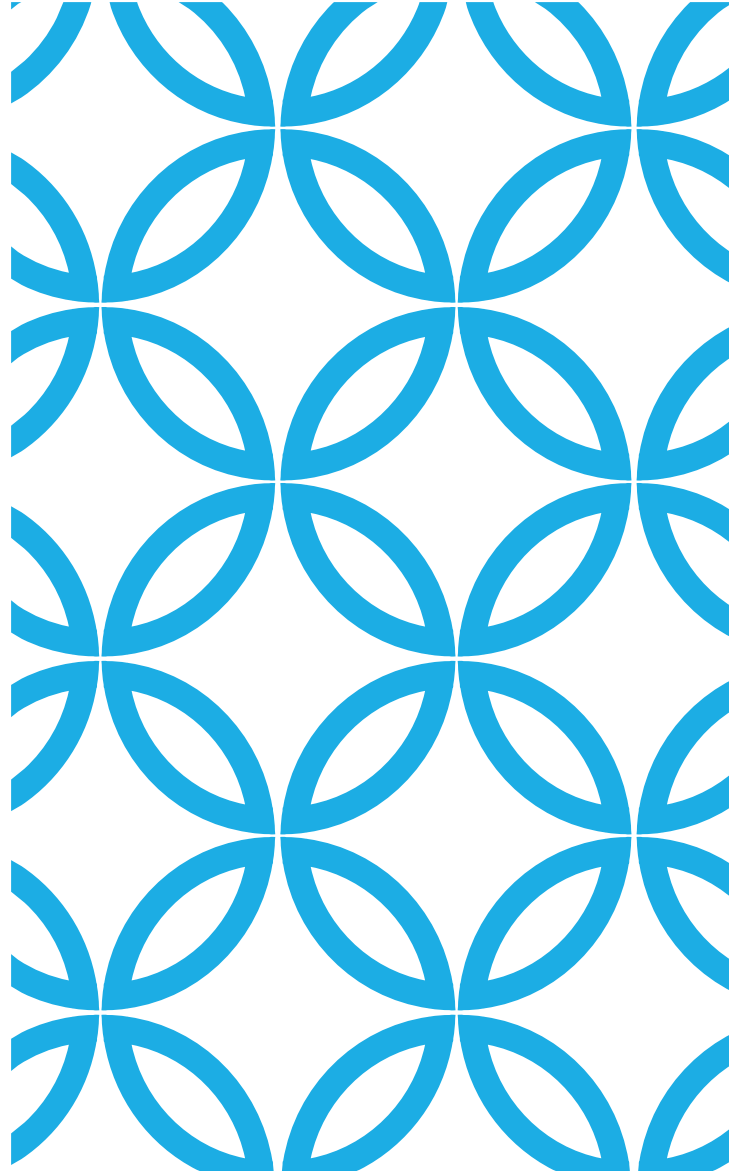
LACK OF TIME



INTERNAL
COMMUNICATIONS



HAVING A TOOL
THAT WORKS



MEASURING FIDELITY



HOW DID YOU DEVELOP YOUR FIDELITY MEASURE

Existing measure? If yes, did you need to modify it?

Practice Profile?

In collaboration with those you will use it with (e.g., teachers)?

How else?



HOW DO YOU COLLECT FIDELITY DATA?

Observation

Teacher surveys

Student report

What else?



**Understand
Students'
Expectations**



**Improve
Learning**



**Improve
Faculty
Performance**



**Improve
Learning
Environment**



**Improve
Facility**

WHY STUDENT VOICE?

How do you know what's not working for kids?

WHAT TECHNOLOGY DO YOU USE?

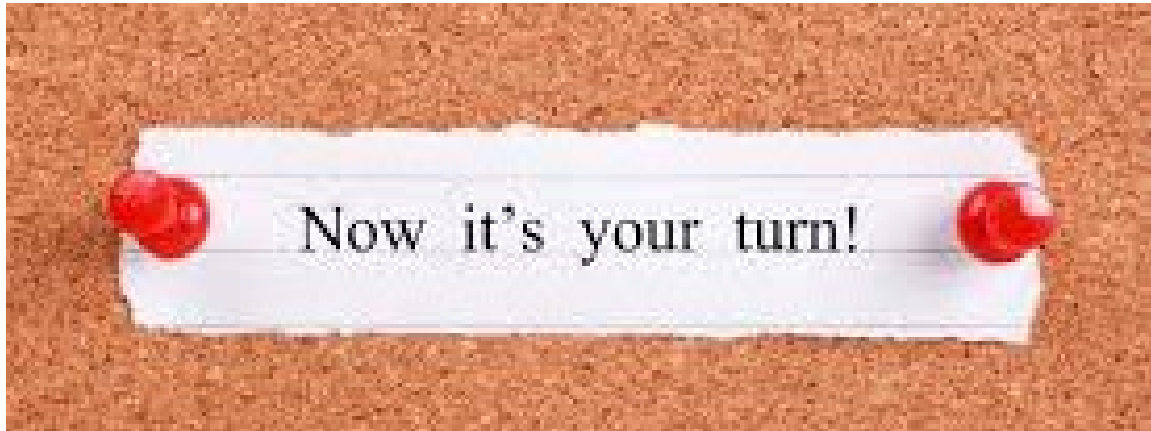
SWIVL

Bug in Ear

Mursion

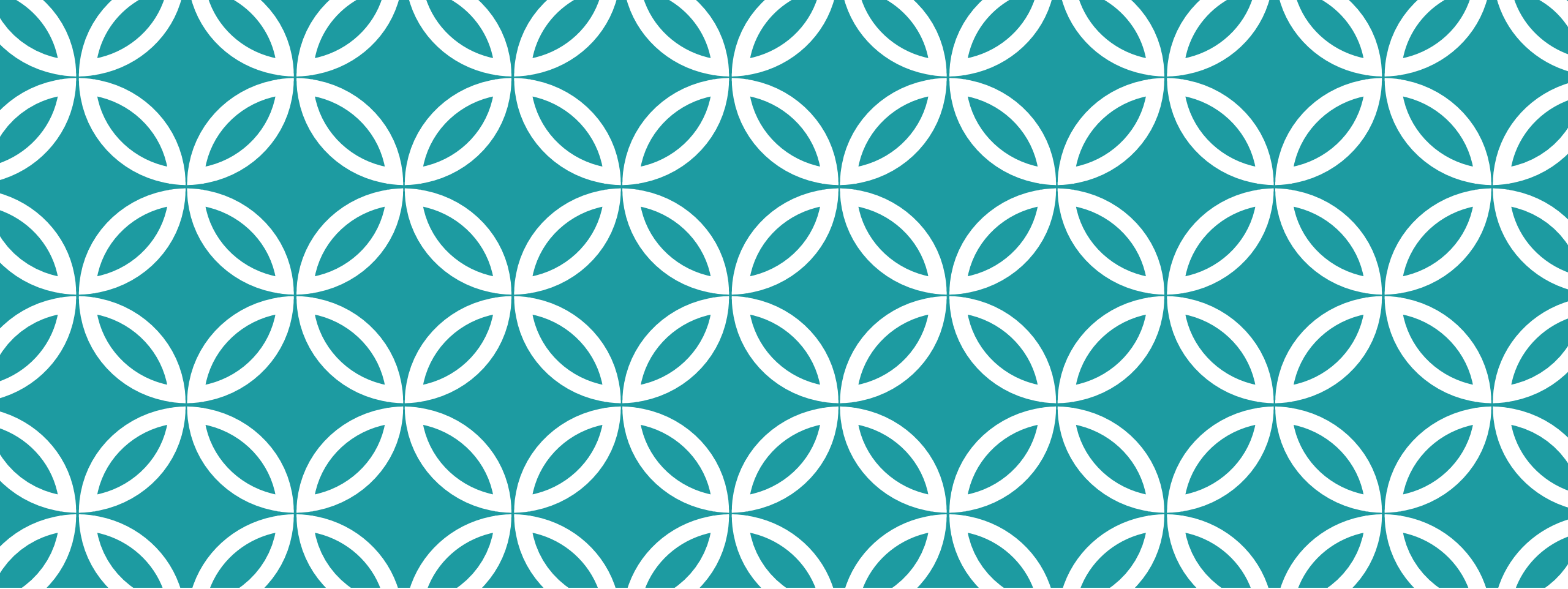
What else?





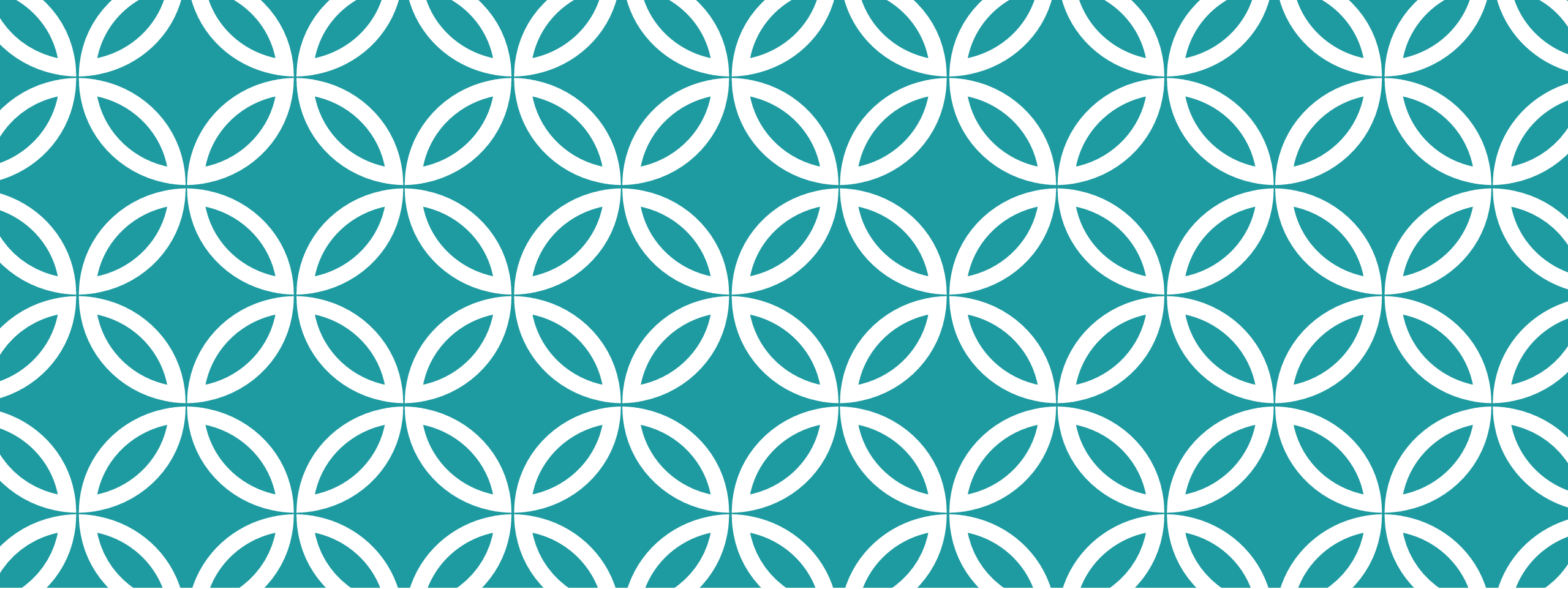
WHAT DO YOU WANT TO FOCUS ON THIS YEAR?

This will help us plan Fidelity
Fridays



GPRA RESULTS







PROGRAM MEASURE 2: IMPROVING IMPLEMENTATION

The percentage of Special Education State Personnel Grant funded Initiatives that meet benchmarks for improvement in implementation of SPDG-supported practices over time.

Year	Target	Actual (or date expected)	Status
2016	60.0	74	Target Exceeded
2017	60.0	72	Target Exceeded
2018	65.0	54.5	Target Not Met
2019	65.0	48.0	Target Not Met
2020	70.0	60.0	Target Not Met, but Improved
2021	70.0	59.3	Target Not Met
2022	60.0	48.0	Target Not Met
2023	60.0	70.6	Target Exceeded
2024	60.0	50.0	Target Not Met

Initiative	Met Target	
	Yes	No
Implementation Year 3 (10 initiatives)	4	6
Implementation Year 4 (2 initiative)	1	1
Implementation Year 5 (0 initiatives)	-	-
Implementation Year 6 (8 initiatives)	6	2
Implementation Year 7 (6 initiatives)	2	4
Total (26 initiatives)	13	13
%	50.0%	50.0%

2				
3	4	6	10	40%
4	1	1	2	50%
5	0	0	0	#DIV/0!
6	6	2	8	75%
7	2	4	6	33%

CONSIDERATIONS



Be clear about the fidelity measure you used.

How will the reviewers know it's a fidelity measure?



If your fidelity measure is a self-assessment, describe 20% external observation reliability check, if possible.

If it's not a self-assessment make that clear in your description.



Setting next year's targets... are your targets appropriate?