

SOUTH DAKOTA STATE PERSONNEL DEVELOPMENT GRANT (SPDG)

FAMILY ENGAGEMENT

SPDG Project Goal:

Develop a systematic, cohesive, collaborative, and sustainable evidence-based literacy model for struggling readers, especially students with specific learning disabilities, grades K-5.

Partners include:

9 elementary schools on the western side of South Dakota

8 elementary schools on the eastern side of South Dakota

Department of Education

Department of Special Education

South Dakota Parent Connection



SPDG OVERARCHING GOALS

Develop a system that:

- Supports struggling readers (Specific Learning Disabilities) K-5
- Utilizes data-driven decision making
- Implements an evidence-based literacy model
- Embeds coaching to ensure fidelity of implementation models
- 90% of budget must be spend on professional development
- Provides a cohesive and collaborative system
- **Engages families**
- Develops sustainability plan after five year grant completion



About South Dakota Parent Connection (SDPC)



Parent Training and Information Center (PTI)

- South Dakota's PTI for over 30 years
- Each state has at least one PTI
- Funded by OSEP
- Statewide reach with offices in Sioux Falls and Rapid City
- Staffed by families, 50% of Board members are families



Family to Family Health Information Center (F2F)

- Assists families of children and youth with special health care needs and the professionals who serve them.
- Who are children with special health care needs?
 - ✓ Physical
 - ✓ Developmental
 - ✓ Behavioral
 - ✓ Emotional
- MCH Title V Funded



SPDG TIMELINES

- Five Year Grant Cycle
- State is just finishing year 2 of the grant cycle
- We are just finishing our first year with the SPDG grant, focusing on family engagement.
- The grant will be completed by June of 2022.



WHY FAMILY ENGAGEMENT



- Over 50 years of research identifies the critical role parents play in the lives of their children.
- One role is as an advocate for the education of their child.
- We know that parents and family engagement has a sustained and systemic effect on learning outcomes for children.
- SDPC's role in this project is to work with schools and families to establish a partnership around understanding how children learn to read and best practice, proven strategies that help them in the process of becoming readers both at home and at school.

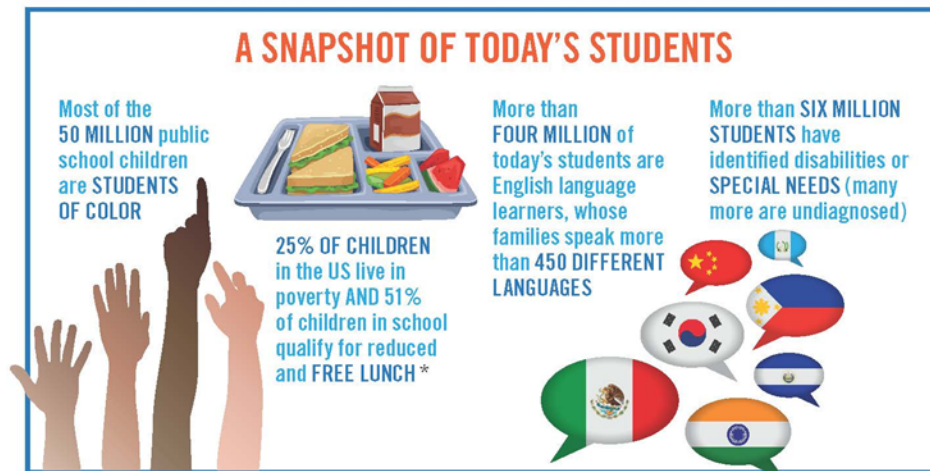
WHAT HAVE WE DONE SO FAR?

We met with all the schools to come up with a definition of family engagement.

Activities vs Engagement

Authenticity of partnerships

Understanding of Barriers to partnership



What are ways we can work to elevate the barriers we encounter when we seek to involve parents in as partners with our schools?





Family Friendly Walkthrough

Family and Educator Survey

Survey Components

Areas surveyed included:

- Feelings of safety and belonging
- Usefulness of information received from school/teacher
- Timeliness of information received
- How often families participated in school events and read to their child at home

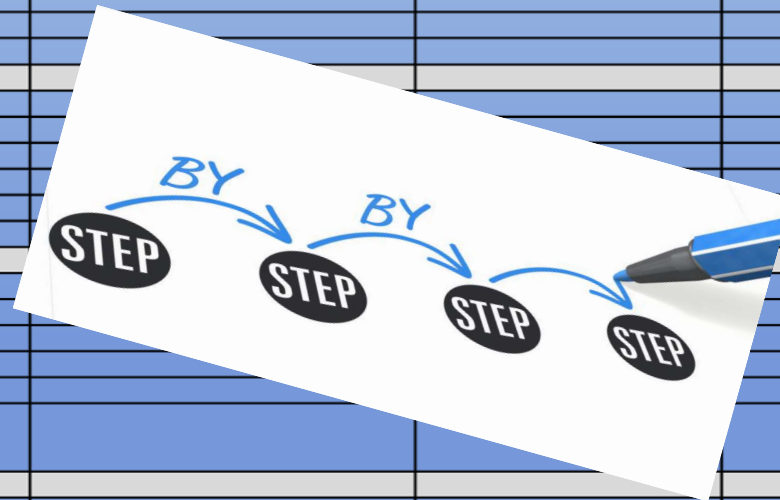
Walk-Through Components

Five areas evaluated during the walk-through:

- Physical - Welcoming Environment
- School-Wide Practices
- Home – School Communication
- Learning Connections
- Printed Materials/Technology

EACH SCHOOL RECEIVED AN REPORT ON OUTCOMES OF WALKTHROUGH AND SURVEYS AND DEVELOPED AN ACTION PLAN

Task #	What is the problem/issue/task to be addressed?	To-Do List	Persons Responsible	Follow-Up or Completion Date	Complete Y/N	Scale up needed Y/N	Fidelity Check date
1	Increase participation in Family and Staff Surveys from ___% to ___%	1.					
		2.					
		3.					
		4.					
		5.					
		6.					
2	Parent training on apps to use at home	1.					
		2.					
		3.					
		4.					
		5.					
		6.					
3	Increase parent understanding of grade level standards	1.					
		2.					
		3.					
		4.					
		5.					
		6.					
4	Explore adding a l	1.					
		2.					
		3.					
		4.					
		5.					
		6.					



What did we learn? In the area of literacy . . .

62.5% of schools identified the need to help families learn how to support learning at home through technology

Between 75 and 81% of schools identified that they needed to enhance how parent receive information about how to work with their child at home.

44% of schools identified that parents need help reading and understanding their child's report card and in understanding grade level standards their child will learn across the school year.

94% of schools determined that, while school events are welcoming and build community, they do not include information related to a learning topic or what is happening in the classroom throughout the year.

In visiting with parents who participated in the process with their schools it was determined that all parents need training on a fundamental understanding of how reading develops and is taught to students.

WHAT'S NEXT: PARENT EDUCATION SERIES



4 Modules in 2019-2020 School Year

Module 1: Early September

Live, Livestream, Live-on-live, recorded for later viewing

Module 2: Online learning opportunity in early November

Module 3: Early February 2020

Live, Livestream, Live-on-live, recorded for later viewing

Module 4: Online learning opportunity in early to mid-April

PARENT TOOL KIT

Levels:

PreK-K



1st – 2nd grade



3rd – 5th grade



Backpack icon to represent a students “toolbelt”

Each level designated by a consistent colored backpack

Activities, strategies and resources used during training will be coded by level using this system

Training materials and supplementary materials will be added to the toolkit.

Eventually, all of us will be able to also add materials/resources

NEXT STEPS FOR SCHOOLS:

Each school will need to think and plan how you will support the Parent Ed. Series.

SDPC will conduct an annual FFW review with each school

West River Schools – Fall

East River Schools – Spring

By Nov. 1, each school will receive new Family and Educator Surveys to distribute.

How will your school increase participation and rate of return?

SDPC will work with individual schools next year to identify specific elements/topics of Parent Education they would like for their school. These trainings and supports will take place in the 2020-2021 school year.



QUESTIONS?

RESOURCES

www.sdparent.org

<https://doe.sd.gov/title/toolkit/documents/I7-Guide.pdf>

<https://doe.sd.gov/grants/SPDG.aspx>