

Use of the SCA/RCA in Driving the Illinois ESE Network



ILLINOIS ELEVATING
SPECIAL EDUCATORS
NETWORK

Laura Barwegen, Ed.D., IESE Project Evaluator

Stephanie Woodley, IESE Program Coordinator

Erin Whalen, ISBE Project Director



Office of Special Education Programs
U.S. Department of Education

Special Education Landscape in Illinois

Teacher Shortage

Lack of Targeted
Professional Learning

Substitutes/Unlicensed
Teachers

Success of Students
with Disabilities

IESE Objectives

Recruiting
and Retaining
Special
Educators

Recruiting and retaining high quality
special education teachers

Sustainable
Professional
Development

Building sustainable professional
learning opportunities for educators

Student
Success

Improving outcomes for students
with disabilities

Parent
Engagement

Connecting families and educators
to make powerful relationships



Driving Question

Does the state of Illinois have the capacity, at the State level and the Regional level, to implement the effective educational innovations necessary to address the stated objectives of the grant? Upon what evidence do we base our answer to this question?

SISEP Instruments

**State Capacity
Assessment (SCA)**

Regional Capacity
Assessment
(RCA)

Description of the Scales of the State Capacity Assessment

Scale	Description
Leadership	Assesses leadership and coordination functions that champion change and ongoing improvement across the system. These items address advocacy, accountability, and shared decision-making while creating a culture of ongoing learning and improvement.
Infrastructure & Resources	Refers to leadership's commitment to development of an infrastructure that supports effective and sustained implementation of innovations. This includes attention to policies and procedures and allocation of resources to support continuous improvement.
Communication & Engagement	Items examine leadership's communication with and support of collaborative partnerships with stakeholders, including their regional and local agencies. This includes a focus on establishing collegial trust and shared understanding of key initiatives both internally within the agency as well as with external stakeholders.

Item 7. The IESE Network develops and refines **internal policies or procedures** that support key initiatives.

Fully in Place (2)	Partially in Place (1)	Not Yet in Place (0)	Examples of Potential Evidence
The IESE Network consistently develops and refines policies and procedures to make it possible to do the work of the key initiatives.	The IESE Network inconsistently develops and refines policies and procedures.	The IESE Network does not develop and refine policies and procedures to make it possible to do the work of the key initiatives.	Revised written policies or written procedures Communication messages or training supports on new procedures

Illinois State Capacity Assessment: 2021

Strengths



Item 1. The IESE Network **creates a vision** for achieving equitable outcomes for elevating special educators throughout the State.



Item 11. The IESE Network values staff contributions to effective implementation of key initiatives.



Item 17. The IESE Network leadership demonstrates support for the team responsible for implementing key initiatives as identified by the grant.

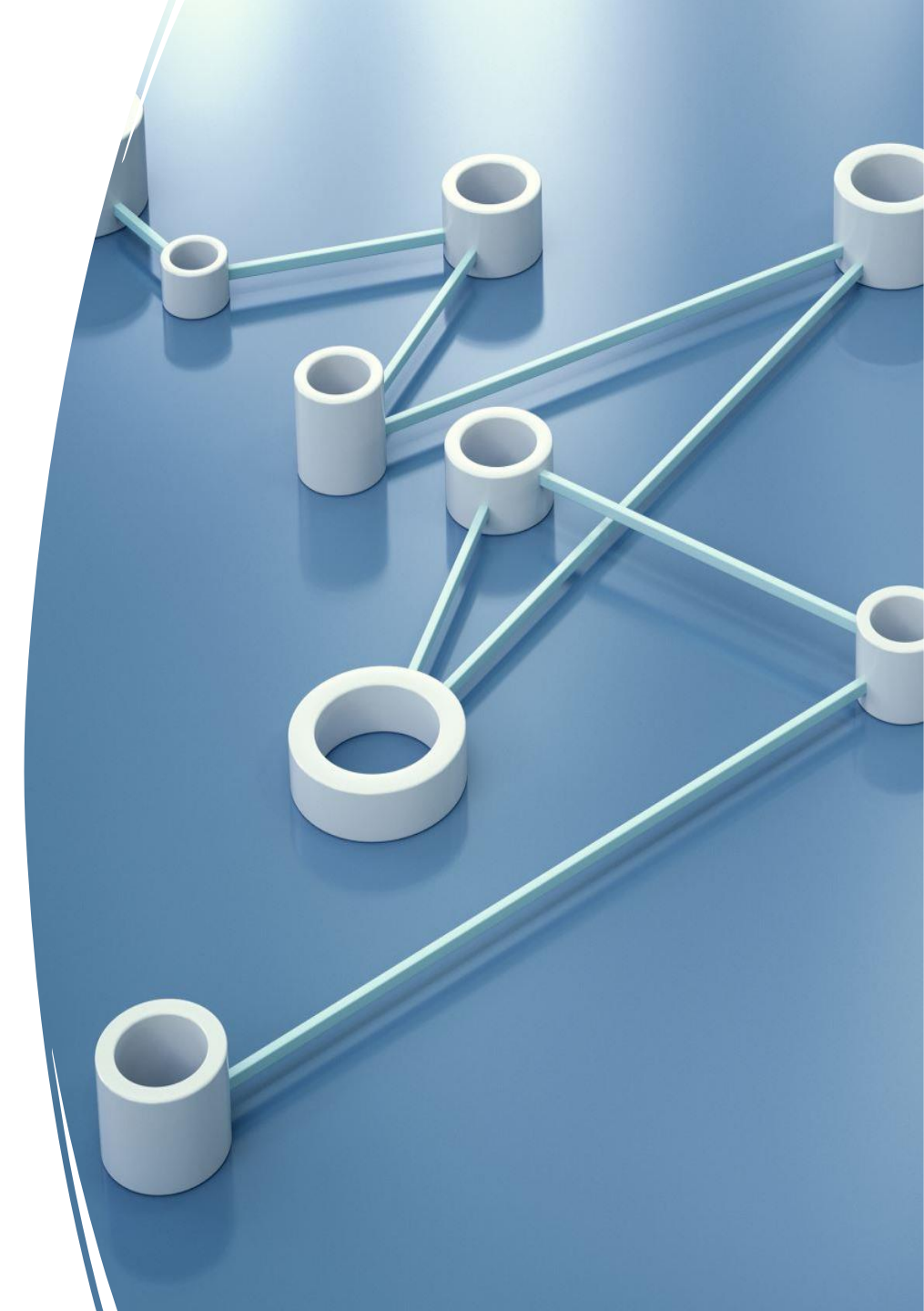


Item 22. The IESE Network cultivates a culture of learning.

Illinois State Capacity Assessment: September 2021

The Unexpected

- Item 7. The IESE Network develops and refines **internal policies or procedures** that support key initiatives.
- Item 8. The IESE Network effectively communicates with all internal staff and is responsive to feedback from all staff (bi-directional)
- Item 21. The IESE Network uses a coordinated process for assessing, selecting, and prioritizing key initiatives to support achievement of articulated outcomes.



Action Steps from September 2021 SCA Administration

Collection and Dissemination of Data.

Clarity of Roles and Expectations.

Completion of Handbook and Review.

Consistent Development of Professional Learning.

Growth in State Capacity to Implement IESE Network Initiatives

Scale	September 2021 Score	October 2022 Score
Leadership	9/18 50%	16/18 88.89%
Infrastructure & Resources	10/12 83.3%	11/12 91.67%
Communication & Engagement	10/18 55.6%	16/18 88.89%
Total State Capacity Assessment (SCA) Score	29/48 60.4%	43/48 89.6%

SISEP Instruments

State Capacity
Assessment (SCA)

Regional Capacity
Assessment
(RCA)

Scales of the Regional Capacity Assessment

Scale	Description
Leadership	Active involvement in facilitating and sustaining systems change to support the use of <i>Effective Innovations</i> through strategic communication, decisions, guidance, and resource allocation; promotes vision, visibility, priority, and policy.
Competency	Strategies to develop, improve, and sustain educators' ability to use implementation science to support the use of an <i>Effective Innovation</i> as intended in order to achieve desired outcomes.
Organization	Changing structures, roles, and processes to more precisely support the use of <i>Effective Innovations</i> and to collect, analyze, and use data in ways that result in continuous improvement of systems and supports for educators. Organization drivers include: Decision Support Data System, Facilitative Administration, and Systems Intervention.

Illinois Regional Capacity Assessment: 2021

Strengths

- Item 1: There is a Regional Implementation Team (RIT) to support districts in developing implementation Capacity;
- Item 9: REA allocates resources to support the development of district implementation capacity; and
- Item 10: RIT engages in Exploration Stage activities with districts to develop implementation capacity.





Illinois
Regional
Capacity
Assessment:
2021
*The
Unexpected*

- Item 18. RIT has access to relevant data.
- Item 25. The RIT uses a communication plan.
- Item 20. REA has a regional implementation plan for developing regional implementation capacity.

Action Steps from September 2021 RCA Administration

Written Implementation Plan

Formalization of Administrative Processes

Completion of IESE Network Handbook

Growth in Regional Capacity to Implement IESE Network Initiatives

Scale	September 2021 Score	October 2022 Score
Leadership	45/70 64.29%	68/70 97.14%
Competency	36/90 40.00%	60/90 66.67%
Organization	13/90 14.4%	65/90 72.22%
Total Regional Capacity Assessment (RCA) Score	94/250 37.6%	43/250 77.2%

Perspectives from the Illinois State Board of Education

- SCA and RCA have been used to drive the capacity development of the IESE Network and provided the foundation of the focus of the May 2022 IESE Network Leadership Retreat;
- The data from the SCA and RCA have been shared with stakeholders at the Illinois State Board of Education and the IESE Network Advisory Council; and
- The SCA and RCA have given language in requests for further data sharing, communication protocols, and meeting agendas.

Shared Conversations

Have you used the SCA and RCA in your SPDG? If so, what were your unexpected results that helped strengthen your implementation of effective educational innovations, or weaken them?

If you have not used the SCA or the RCA, what are some possible applications that you might envision for ways it could help support your capacity development?

Erin Whalen, ISBE Project
Director
ewhalen@isbe.net

Stephanie Woodley, IESE
Program Coordinator
swoodley@iesenetwork.org

Laura Barwegen, Ed.D.
IESE Project Evaluator
lbarwegen@iesenetwork.org

The contents of this presentation were developed under a grant from the U.S. Department of Education, #H323A200014. However, those contents do not necessarily represent the policy of the U.S. Department of Education, and you should not assume endorsement by the Federal Government. Project Officer, Jennifer Coffey



ILLINOIS ELEVATING
SPECIAL EDUCATORS
NETWORK