

# NH Family Engagement Strategies

---

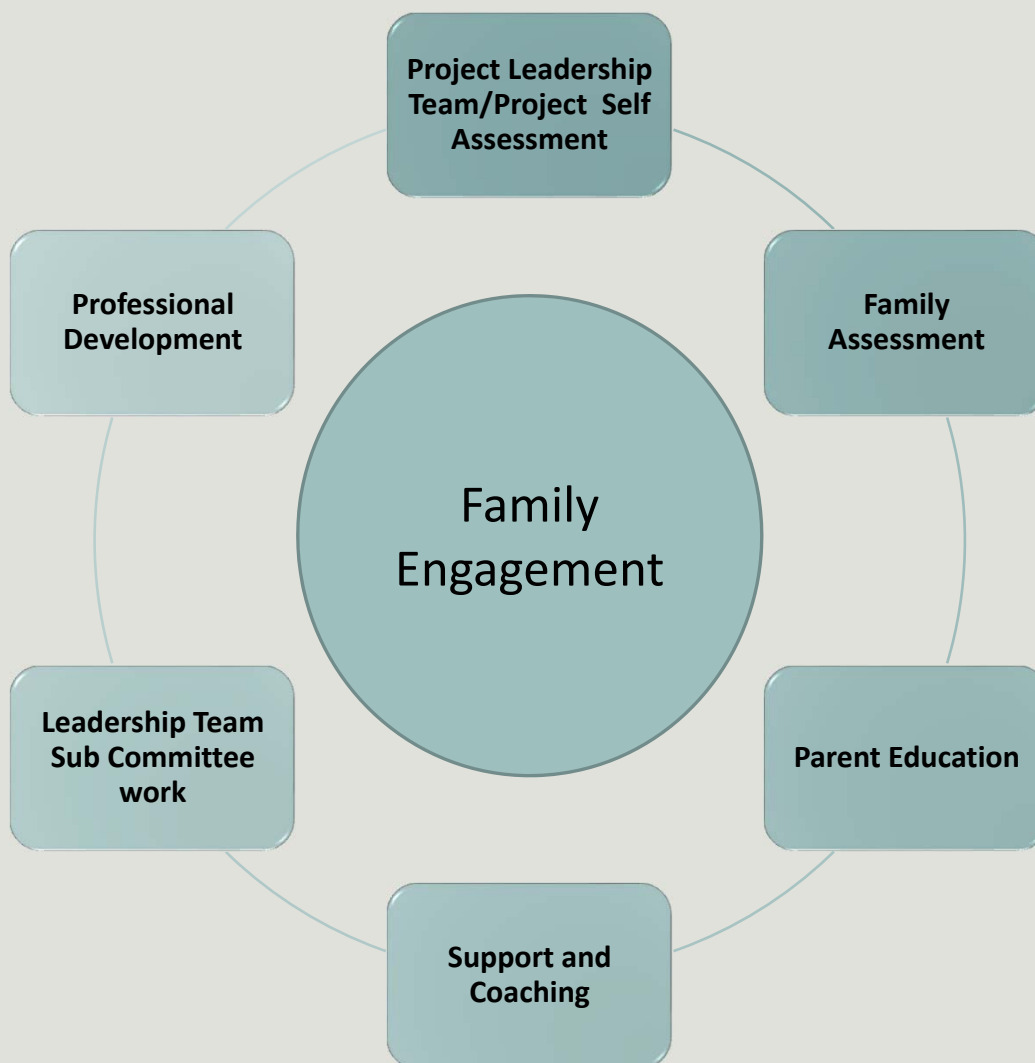
Kimm Phillips  
Director of Family Engagement  
Parent Information Center  
[www.picnh.org](http://www.picnh.org)

# Family Engagement

---

- ❖ PTI funded as a full SPDG partner
- ❖ SPDG has required Family Engagement requirements
- ❖ PTI works directly with Leadership Teams to support the enhancement/development of Family Engagement as needed
- ❖ Develop relationships between parents and staff/practitioners
- ❖ Develop trainings for parents and professionals and use Train the Trainer techniques to build capacity

# Promoting & Sustaining Family Partnerships



# Resources

---

Participatory Adult Learning Strategies

Implementation Science

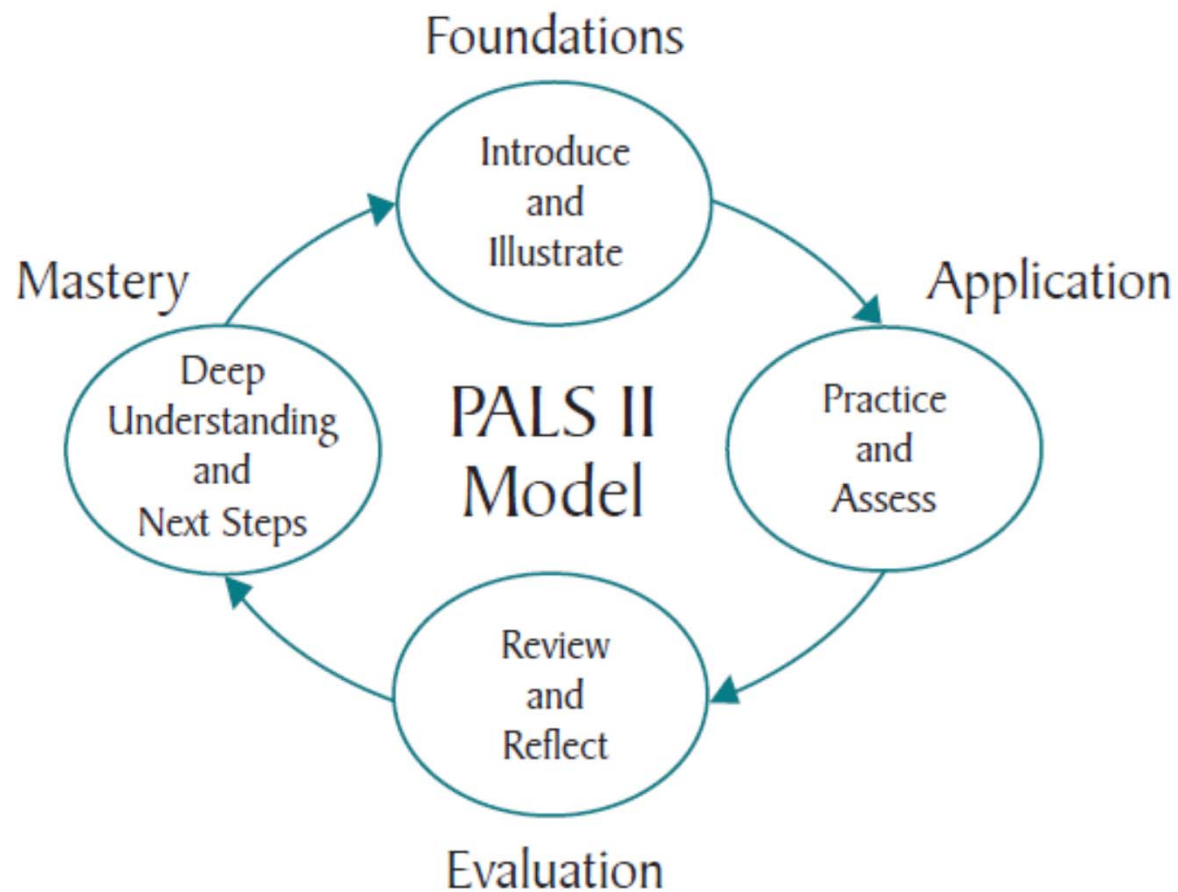
Dual Capacity-Building Framework

Project Specific Frameworks

Leading by Convening

Harvard Family Research Project

# Participatory Adult Learning Strategies (PALS)



# Promoting and Sustaining Partnerships with Families

## 1. EXPLORATION

- Conduct Family Focus Groups, listening sessions, surveys
- Use family feedback to inform any self-assessments

## 4. FULL IMPLEMENTATION

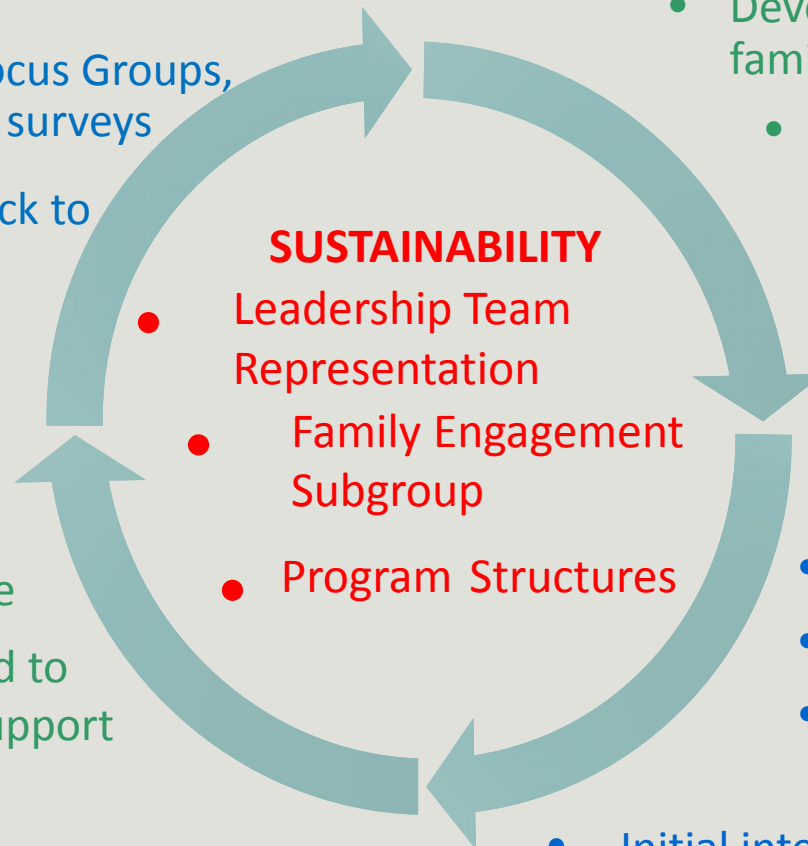
- Processes & procedures in place
- System recalibrated to accommodate & support new initiatives

## 2. INSTALLATION

- Develop action plan to increase family engagement
  - Include family members on the school leadership team
  - Parent/professional coaching
  - Offer parent/professional education

## 3. INITIAL IMPLEMENTATION

- Implement action plans
- Identify & address challenges
- Develop Family Engagement Subgroups
- Initial integration of partnership strategies, processes and procedures



# Polling Question

---

How knowledgeable are you with Dual Capacity-Building Framework to build Family School Partnerships

- ❖ Very- we have a solid knowledge and use it
- ❖ We've heard about it...some
- ❖ The what framework?



**Figure 2: The Dual Capacity-Building Framework for Family–School Partnerships**





# The Dual Capacity-Building Framework for Family-School Partnerships (Version 2)



# Polling Question

---

Who is the target audience of most of your family engagement strategies?

Mainly to parents

Mainly to school staff

It's pretty equal



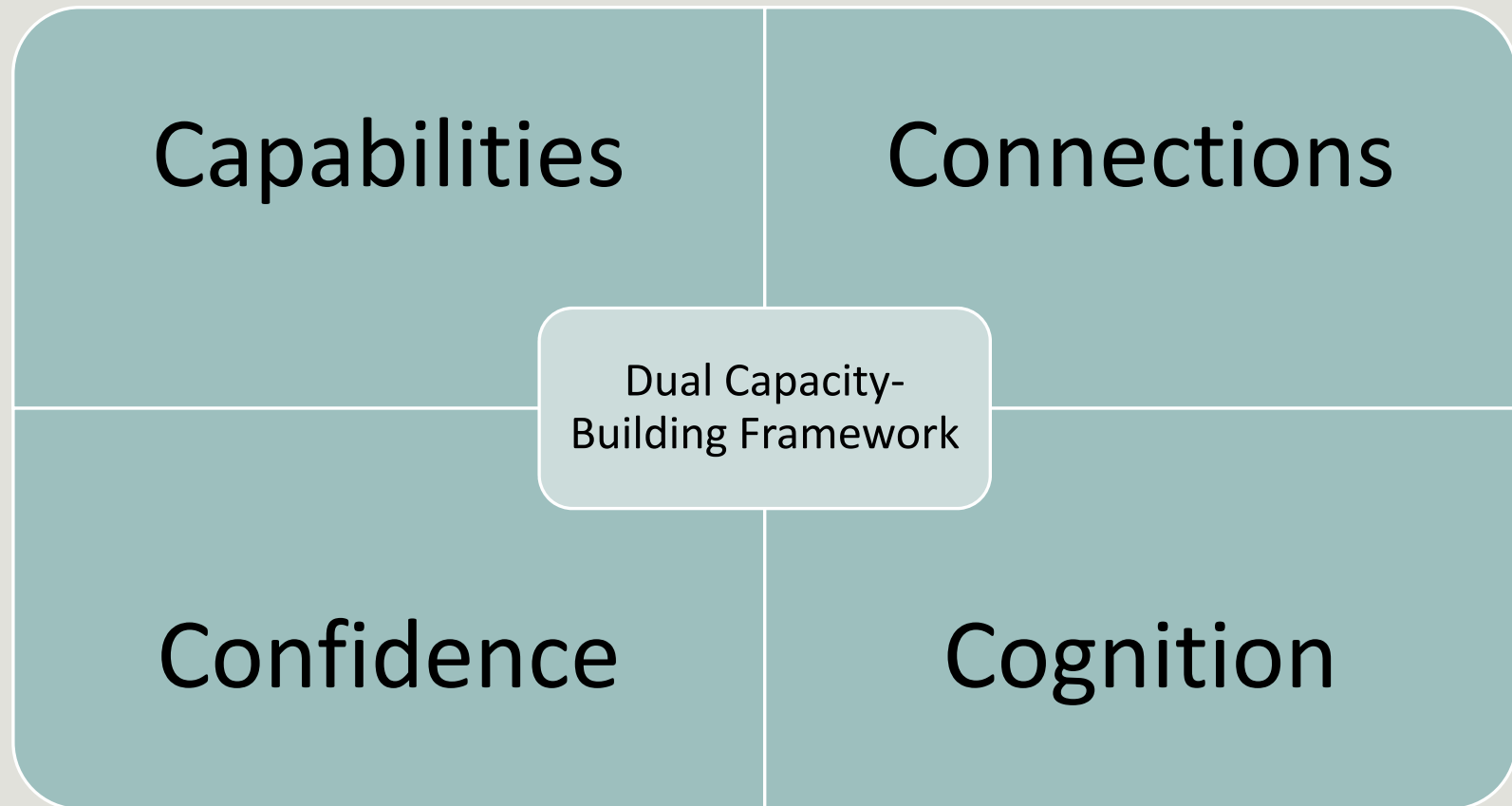
# Process Conditions

---

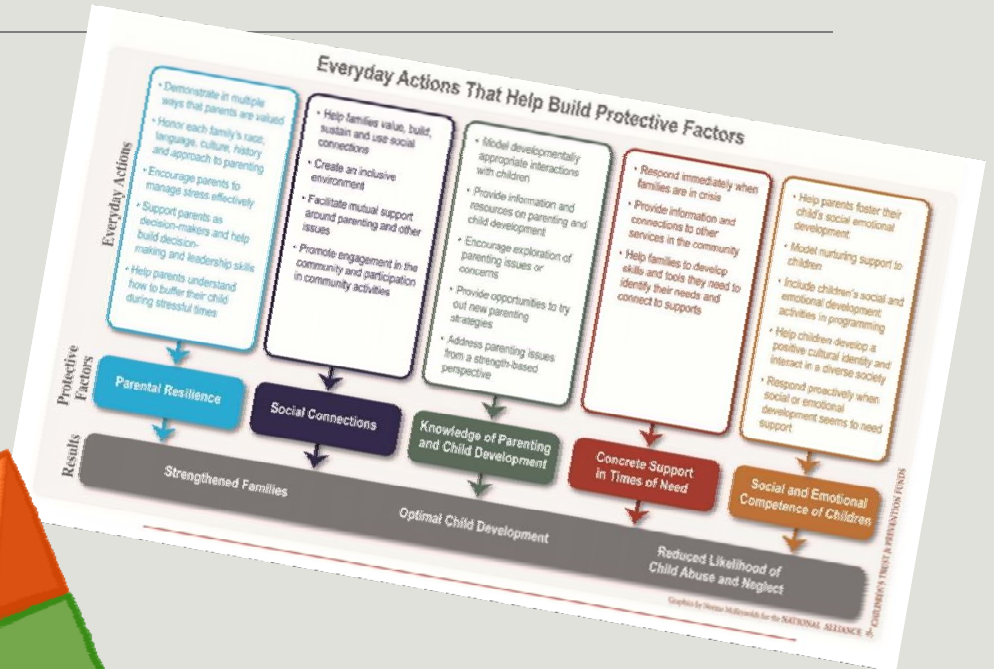
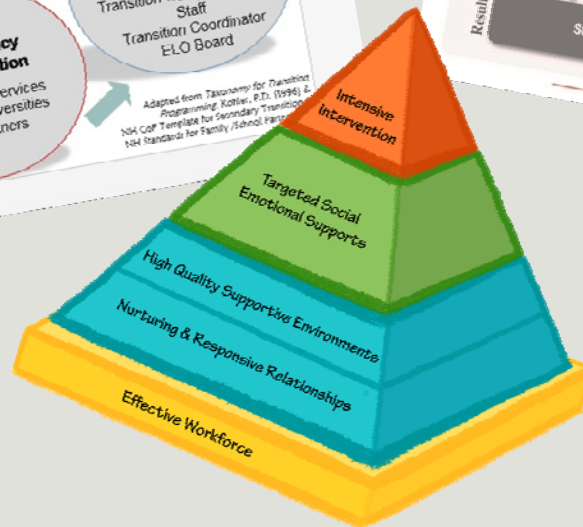
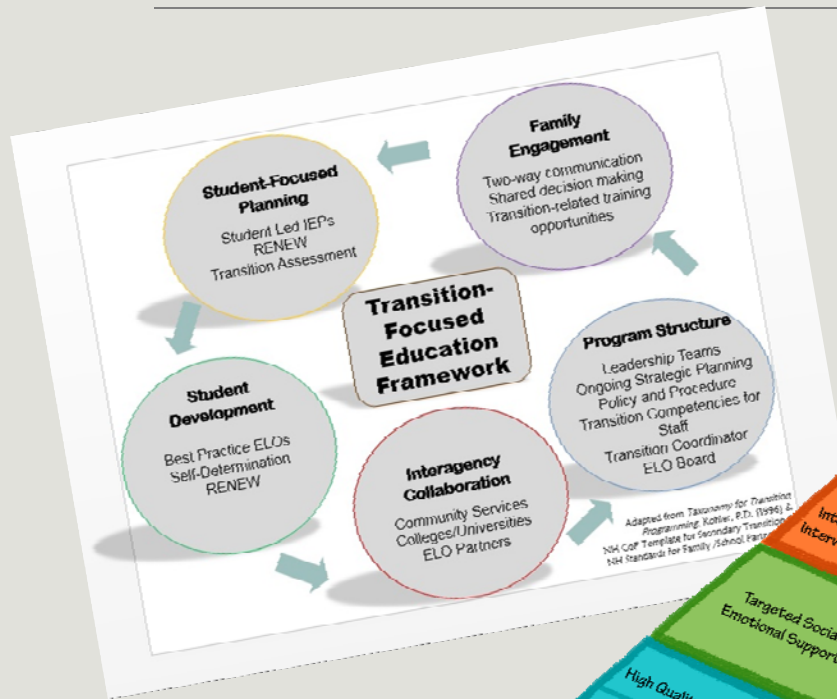
- ❖ Relational
- ❖ Linked to Learning
- ❖ Asset-based
- ❖ Culturally Responsive
- ❖ Collaborative
- ❖ Interactive

# Goals and Outcomes

---



# Project Specific Frameworks



# Family Engagement Professional Development

---

Family Engagement/Parent Partnering and Dual Capacity Building

Demystifying Data

Gathering Family Voices

Asking the Right Question

Communication Workshops

Examining Bias

Parent Café

Family Leadership Training

Serving on Groups that Make Decisions: A Guide for Families\*

\*Revised & published by WI Family Assistance Center for Education, Training, and Support (WI FACETS) 2015, developed as part of SPDG (2007-2012) from the WI Department of Public Instruction, Office of Special Education Programs.

# Family Engagement Materials

---

Tip Cards

Guidebooks

Handouts

Scripts

Fidelity Tools

Feedback Loops

# Sharing Your Work

---

- How does the SPDG Leadership Team support and/or value prioritize family engagement in their planning?
- How does the SPDG Leadership Team develop and convey Family Engagement expectations to districts?
- How does the SPDG build both the capacity of school personnel and families to partner effectively?



# Wrap up

---

CLOSING THOUGHTS AND  
QUESTIONS

# Thank You!

---

The contents of this presentation are provided under a grant from the US Department of Education, H323A170029. However, those contents do not necessarily represent the policy of the US Department of Education, and you should not assume endorsement by the Federal Government. Project Officer, Jennifer Coffey.

