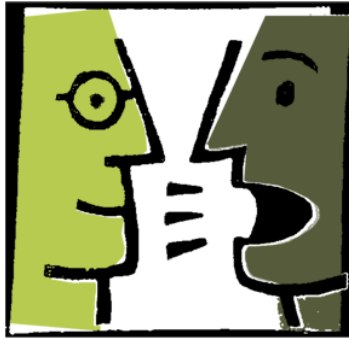


---

## SPDG National Meeting



making connections



## **2019 SPDG National Meeting**

FHI 360 Conference Center  
1825 Connecticut Ave. NW, 8<sup>th</sup> Floor  
Washington, DC

**October 17-18, 2019**

---

## Particular **Thanks** to the Planning Committee

---

Deb Chiodo

Family/School Partnership Coordinator  
Ask Resource Center

Tara Courchaine

Project Officer  
OSEP

Eric Gebhart

SPDG Coordinator  
Iowa Department of Education

Ashley Hall

SPDG Project Director  
Ohio Department of Education

Andrew Schaper

MTSS Evaluation & Research Coordinator  
Colorado Department of Education

Pheobie Thomas

Project Coordinator  
New Jersey Department of Education/NJTSS-ER

Annette Young

SSIP Implementation Specialist  
Montana Office of Public Instruction

---

SPDG National Meeting



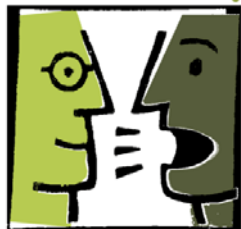
making connections



## 2019 SPDG National Meeting

### Table of Contents

<b>Agenda.....</b>	<b>1</b>
<b>Golden Circle.....</b>	<b>3</b>
<b>Alignment Worksheet .....</b>	<b>6</b>
<b>Breakout Schedules</b>	
<b>Day 1:</b>	
<b>15 + 15 SPDG Caffeine from the Field Served with Half and Half</b>	
<b>Session One – 3:55 to 4:25.....</b>	<b>7</b>
<b>Session Two – 4:30 to 5:00.....</b>	<b>11</b>
<b>Day 2:</b>	
<b>Forum Sharing:</b>	
<b>Session 1 – 9:00 to 9:40 .....</b>	<b>14</b>
<b>Session 2 – 9:50 to 10:30.....</b>	<b>17</b>
<b>Resource Leveraging Jigsaw Activity</b>	
<b>Reader #1.....</b>	<b>20</b>
<b>Reader #2.....</b>	<b>21</b>
<b>Reader #3.....</b>	<b>22</b>
<b>Resource Leveraging Article .....</b>	<b>23</b>
<b>Local Restaurants .....</b>	<b>33</b>
<b>FHI 360 Floor Plan .....</b>	<b>35</b>
<b>Contact Information for New and Old Friends.....</b>	<b>37</b>
<b>Notes .....</b>	<b>38</b>



making connections



# 9<sup>th</sup> Annual SPDG National Meeting

## Cowboys and Pit-Crews: A Deeper Look at What it Takes to Align Systems and Get Results

**October 17-18, 2019**

FHI 360 Conference Center • 1825 Connecticut Avenue NW • 8<sup>th</sup> Floor • Washington, DC

### Meeting Objectives

**Increase knowledge and skills related to systems and initiative alignment**

**Increase knowledge of and ability to use new tools**

**Build a stronger program network**

### Pre-Meeting: October 16

5:30 – 6:30 pm	Registration.....	<i>Courtyard Marriott</i>
5:00 – 8:00 pm	Informal Group Meet Up .....	<i>Board Room: 1737 Connecticut Avenue</i>

### Day One: October 17

8:00 – 9:00	Registration .....	<i>Academy Hall, FHI 360 Conference Center, 8<sup>th</sup> Floor</i>
8:30 – 9:00	New Participant Orientation .....	<i>Vista B</i>
	<i>Steve Goodman, Ph.D., MI SPDG Director</i>	
9:00 – 9:20	Conference Overview and Introduction to Alignment Discussion .....	<i>Academy Hall</i>
	<i>Jennifer Coffey, Ph.D., SPDG Program Area Lead, OSEP</i>	
	<i>John Lind, Ph.D., SIGnetwork Coordinator</i>	
	<i>Laurie VanderPloeg, OSEP Director</i>	
9:20 – 9:25	Transition	
9:25 – 10:15	System Alignment Golden Circle Activity .....	<i>Academy Hall</i>
	<i>Golden Circle Activity Handout on Tables</i>	
10:15 – 10:30	Sharing & Transition	
10:30 – 12:00	Getting Strategic about Systems Alignment: An Improvement Stance to Changing Results Rorie Fitzpatrick, NCSI .....	<i>Academy Hall</i>
12:00 – 1:30	Lunch – On your own	
1:30 – 1:45	Welcome back, project video, and preview of afternoon breakout sessions	
1:45 – 2:30	Initiative Alignment Planning Time.....	<i>Academy Hall and Breakout Rooms</i>
2:30 – 2:40	Transition	
2:40 – 3:40	Community Meetings	
	<i>SSIP-SPDG.....</i>	<i>Academy Hall</i>
	<i>Coaching.....</i>	<i>Vista A</i>
	<i>Evaluators.....</i>	<i>Vista B</i>
	<i>Family Engagement.....</i>	<i>Balcony D</i>
	<i>Activity for those not in a community.....</i>	<i>Balcony E</i>
3:40 – 3:55	Transition	
3:55 – 4:25	15 + 15, SPDG Caffeine from the Field, Served with Half and Half (1).....	<i>See Booklet for Location</i>
4:25 – 4:30	Transition	
4:30 – 5:00	15 + 15, SPDG Caffeine from the Field, Served with Half and Half (2) .....	<i>See Booklet for Location</i>
5:10 – 7:00	Optional Networking, Russia House 800 Connecticut Ave NW, Corner of Connecticut & Florida Ave NW	

## Day Two: October 18

8:30 – 8:50	Welcome from Larry Wexler and Overview of Day’s Agenda ..... Academy Hall
8:50 – 9:00	Transition
9:00 – 9:40	Forum Breakout Sessions (1) ..... See Booklet for Location
9:40 – 9:50	Transition
9:50 – 10:30	Forum Breakout Sessions (2) ..... See Booklet for Location
10:30 – 10:45	Transition & Sharing
10:45 – 11:30	Resource Leveraging Jigsaw Activity ..... Breakout Spaces & Academy Hall
11:30 – 11:40	Transition .....
11:40 – 12:00	What does this mean for our work? ..... Academy Hall <i>Jennifer Coffey &amp; John Lind</i>

# Golden Circle

START WITH WHY by Simon Sinek (*adapted from Pilot International District*)

---

“There are leaders and there are those who lead. Leaders hold a position of power or influence. Those who lead inspire us. Whether individuals or organizations, we follow those who lead, not because we have to, but because we want to. We follow those who lead not for them, but for ourselves.”

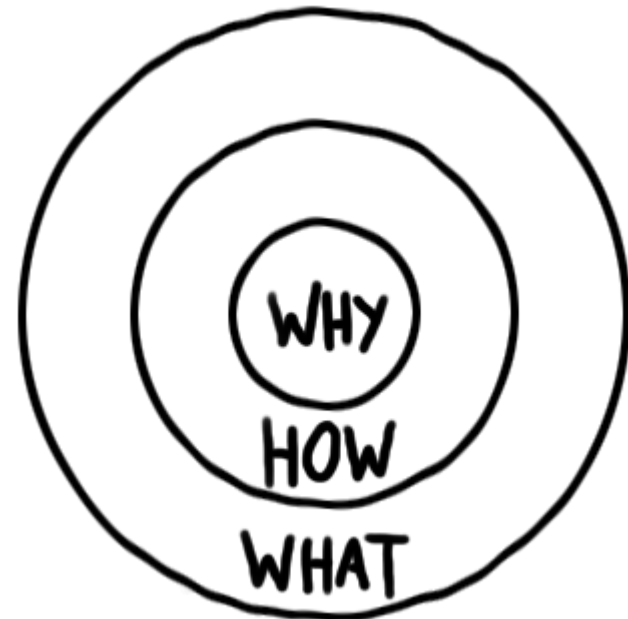
## *The Golden Circle Creates Focus*

Simon Sinek’s Start with Why: How Great Leaders Inspire Everyone to Take Action introduces the “Golden Circle” framework to explain how great companies like Apple, Southwest, etc. start with their “why” to create coherent product and service experiences aligned to their purpose.

The Golden Circle has three layers:

- Why – Why do you do what you do? What’s your purpose?
- How – How do you do what you do to fulfill your purpose?
- What – What do you do? What’s your product or service?

Sinek points out that companies like Southwest start with their “why” (purpose) and infuse that into the “how” (people, process) to deliver the “what” (product). Seems logical, yet many organizations start backwards and instead focus on the “what” without a clear sense of the “how” and definitely not the “why.”



People buy *why* you do it. Not *what* you do.

Starting with “why” isn’t just about discovering your SPDG’s purpose. The Golden Circle is also a framework to help ensure focus on your customer.

For your Systems/Initiatives Alignment activities, what is your WHY?

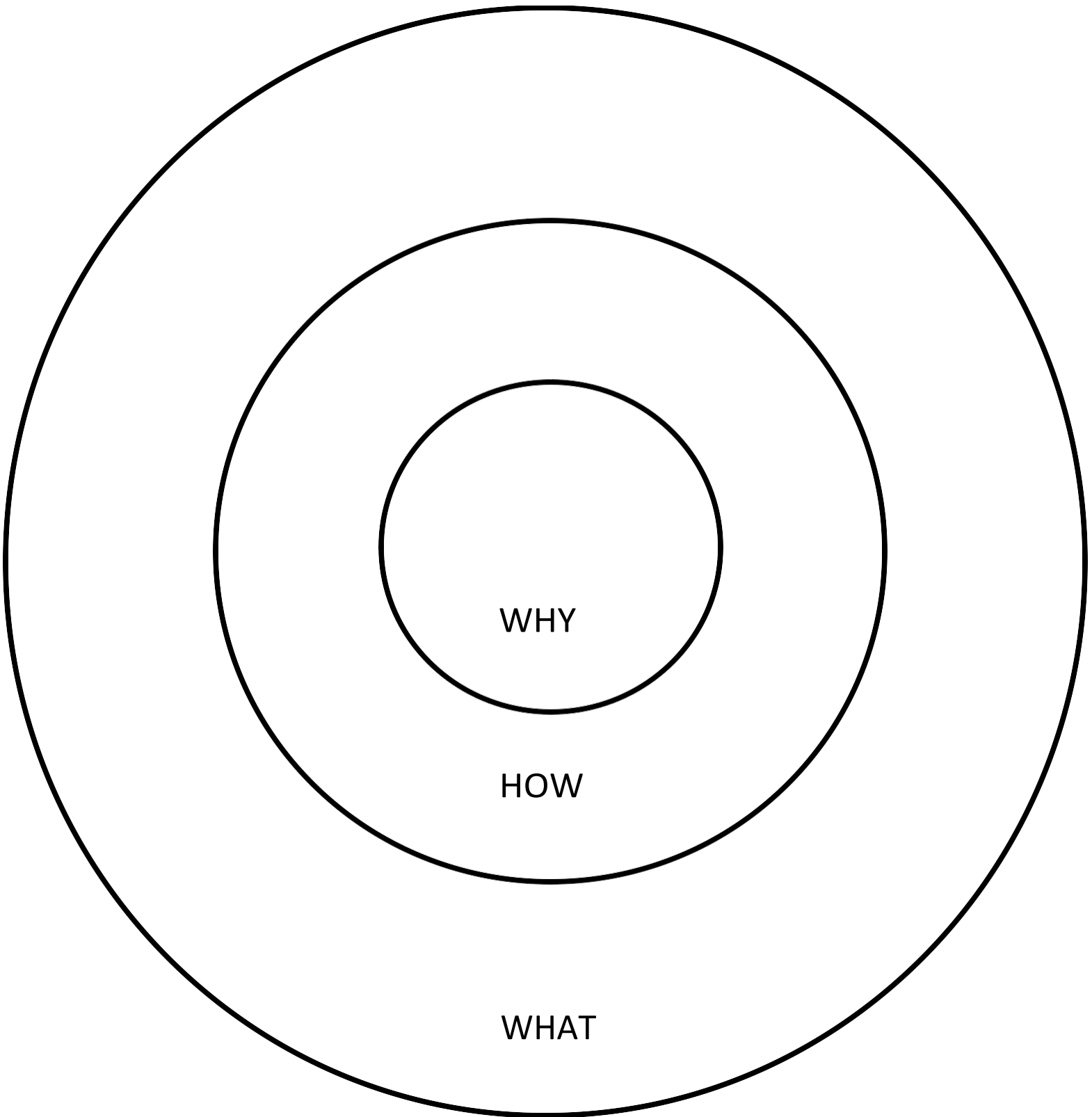
Why –What’s your purpose (goal) for the 2019-20 year? What’s your purpose for the life of your project? Why do you do what you do?

How – How will you fulfill your purpose (goal(s)) for 2019-20?  
For the life of your project?

What – What do you do? What’s your product or service? What will successful alignment look like for your SPDG? For the districts with which you work?

Use the Golden Circle (Next Page) to answer and be prepared to share.

Systems Alignment GOLDEN CIRCLE





# Alignment Worksheet

## Technical Guide for Alignment of Initiatives, Programs and Practices in School Districts

### Section I: Create an inventory of initiatives to be aligned.

- A. Identify each initiative, program or practice to be aligned across the top of the table.
- B. Identify department or division, with budget authority, overseeing initiative.
- C. Identify population served.
- D. List research that determines evidence of effectiveness.
- E. List/summarize outcomes achieved to date.

Section I	Initiative A	Initiative B	Initiative C	Initiative D
Name of Initiatives to be Aligned				
1. Name of lead department/division with budget authority				
2. Population served (e.g. Tier I, II, III, students, staff, families, grade level)				
3. Research based (e.g. peer reviewed)				
4. Outcome(s) achieved to date in the district/schools				



**15 +15**  
**SPDG Caffeine from the Field**  
**Served with Half and Half**

**Session 1**

3:55 – 4:25

*15 +15 – Session 1*

*Location*

<i>15 +15 – Session 1</i>	<i>Location</i>
<p><b><i>State-Level Recognition System for MTSS</i></b></p> <p>This presentation will describe Michigan's current systems for recognizing schools, districts, and intermediate school districts for promising MTSS implementation and impacts on students. Participants will learn about the criteria used, automatize process for identifying sites through the project data system, and iterative progressions of the recognition system.</p> <p><b>Presenter:</b> Anna Harms, PhD, Evaluation &amp; Research Coordinator, Michigan                      Cheyne LeVesseur, PhD, Evaluation &amp; Research Specialist, Michigan                      Julie Morrison, PhD, External Evaluator, Michigan</p> <p><b>System Level:</b> State</p>	<p><b>Academy Hall</b></p>
<p><b><i>From Dissenters to Designers: Empowering project staff through virtual workgroups</i></b></p> <p>Our project evaluation team designed and generated reports for district coaches to use when helping school districts design professional development plans. Almost immediately, the evaluation team fielded complaints from district coaches about shortcomings of these reports. In response, realizing our failure to incorporate the needs of those who were using the reports into design, we invited the dissenting voices to a virtual workgroup, where we promised to listen and collaborate on the design of a revised report. Over the course of several virtual workgroup meetings, the evaluation team came to understand how the reports were being used and perceived both by project staff and district personnel. As a result, those who used the reports most became the designers. The virtual workgroup resulted in more impactful project tools and productive relationships. During the presentation, we will share our story and a list of tangible strategies to use with your own project.</p> <p><b>Presenter:</b> Sarah Marten, PhD, Project Specialist, Missouri                      Jason Torres Altman, MA, Evaluator, Missouri</p> <p><b>System Level:</b> State</p>	<p><b>Vista Room A</b></p>

<p><b><i>Progress Monitoring of Mental Health &amp; Behavioral Interventions</i></b></p> <p>To promote cross-system collaboration and data-based decision making between schools and community mental health centers, the Kansas School Mental Health Initiative developed and is piloting an Excel file intervention monitoring template. Join us to discuss the process for garnering input into tool development, features that School Leadership Teams are finding eye-opening, and strategies for accessing and using aggregated data within SPDG annual reporting.</p> <p><b>Presenter:</b> Cherie Blanchat, LCSW, Kansas School Mental Health Initiative Project Coordinator Amy Gaumer Erickson, Ph.D., Kansas SPDG Evaluator</p> <p><b>System Level:</b> Building, District, Regional</p>	<p><b>Vista Room B</b></p>
<p><b><i>Partnerships for Literacy: Family engagement and literacy</i></b></p> <p>Partnerships for Literacy is a systems intervention that schools implement to boost their students early literacy outcomes. It was developed by the Ohio Statewide Family Engagement Center. The intended result is improved home and school supports for early language and literacy development for young children through: the implementation of a locally developed plan, aligned with the schools reading plan and linking to community resources, a sustainable, representative, family-teacher team that is linked to the schools building leadership team and focused on the needs of all families through family and community engagement practices, and teachers who practice more effective family engagement. All of Ohios State Support Team offices have at least 1 coach trained to support Partnerships for Literacy in Ohio schools. Materials are available in Spanish, Chinese, Somali, and Arabic, so that a representative set of families can participate on Partnerships for Literacy teams.</p> <p><b>Presenter:</b> Barbara Boone, Ph.D., Family Engagement Leader, Ohio</p> <p><b>System Level:</b> Building</p>	<p><b>Angle Room A</b></p>

15 +15 continued on next page

15 +15 – Session 1

Location

<p><b>Tracking Data Collection: The Impact of Color and Frequent Review</b></p> <p>When submission of data in a timely manner is crucial, a regularly shared and colorful tracking system can help keep data collectors, as well as senior grant staff, apprised of both short term and long-term gaps in receipt of data. This system has triggered problem solving discussions leading to a constantly improving data collection system. Presenters will share several tools including 1) a timeline for data collection, 2) a colorful tracking spreadsheet viewed at monthly meetings where coaches report on their activities at supported districts and sites, and 3) a district/site-specific data alert sheet.</p> <p><b>Presenter:</b> Cheryl Huffman, MEd, External Evaluator, OK          Barbara Kurey, MEd, External Evaluator Associate, OK          Bethan Langlois, MEd, SPDG Coordinator, OK</p> <p><b>System Level:</b> State</p>	<p><b>Angle Room B</b></p>
<p><b>Clarifying the Role &amp; Responsibilities of the Check &amp; Connect Coordinator</b></p> <p>The Coordinator is a critical role within the Check &amp; Connect (C&amp;C) intervention, however there is limited documentation and guidance available pertaining to this role. Having clearly articulated performance expectations is vital to a position and when an individual in that position has this understanding, success and fidelity outcomes are increased. This session will provide participants with a tool created by the FL SPDG that will help their staff understand the C&amp;C Coordinator's specific roles and responsibilities surrounding the four non-negotiables of C&amp;C. Closely aligned with the National Mentor Practice Profile, the Coordinator Practice Profile assists Coordinators in understanding what is expected of them. In addition, the tool identifies the support, coaching, guidance, and technical assistance they may need to achieve program success and fidelity. Additional resources for development of the coordinator role will be shared including training agenda, content and toolbox.</p> <p><b>Presenter:</b> Elaine Miller, FL C&amp;C Project Director          Greg Gillman, FL C&amp;C Project Facilitator          Sheila Ward, FL C&amp;C Project Facilitator</p> <p><b>System Level:</b> State</p>	<p><b>Angle Room C</b></p>

15 +15 – Session 1

Location

<p><b>Examples of IRIS Use in States/Districts</b></p> <p>The IRIS Center produces free, engaging, online instructional resources of varying "grain sizes" on many educational topics. These resources can be used independently or paired and bundled to provide broader or deeper coverage of key topics. This session will give examples of how IRIS has collaborated with SEAs and LEAs to infuse IRIS resources within their professional learning systems.</p> <p><b>Presenter:</b> Naomi Tyler, Director, IRIS Center Tanya Collins, Technical Assistance Coordinator, IRIS Center</p> <p><b>System Level:</b> State, District, Building</p>	<p><b>Balcony Room D</b></p>
<p><b>Family-focused eLearning Literacy Resources</b></p> <p>Learn about NCIL’s collection of Ask &amp; Answer mini-modules and eLearning tutorials for parents and caregivers. The Ask &amp; Answer mini-modules answer common questions families often ask about key literacy terms while the eLearning tutorials provide families with evidence-based information, strategies, tips, and activities to help PreK-grade 12 children develop as readers, all in an interactive experience.</p> <p><b>Presenter:</b> Sarah Sayko, Deputy Director, National Center for Improving Literacy</p> <p><b>System Level:</b> State, Regional, District, Building</p>	<p><b>Balcony Room E</b></p>
<p><b>Research-Based Early Reading MTSS: Transitioning School Stakeholders from Planning to Action</b></p> <p>This session will focus on a District Implementation Map and action planning tools that are used in New Jersey to guide MTSS in early reading and hold stakeholders accountable. Use of specific procedures for maintaining improvements in system structures, assessment planning, master scheduling, and direct and explicit reading instruction will be described</p> <p><b>Presenter:</b> Todd A. Glover, PhD &amp; Cynthia Mackowicz, M.Ed., Rutgers University Jessica Hammond, Ed.D., New Jersey Department of Education</p> <p><b>System Level:</b> State (University Partner)</p>	<p><b>Balcony Lounge</b></p>



**15 +15**  
**SPDG Caffeine from the Field**  
**Served with Half and Half**

**Session 2**

4:30 – 5:00

<i>15 +15 – Session 2</i>	<i>Location</i>
<p><b><i>Using Outcome Harvesting Summative Evaluation Techniques</i></b></p> <p>Outcome Harvesting is a method that enables evaluators, grant makers, and managers to identify, formulate, verify, and make sense of outcomes. Unlike some evaluation methods, Outcome Harvesting does not measure progress towards predetermined outcomes or objectives, but rather collects evidence of what has been achieved, and works backward to determine whether and how the project or intervention contributed to the change. Outcome Harvesting can be a useful monitoring and evaluation tool for the right situations including when outcomes, rather than activities, are the critical focus. For this reason, SPDG staff interested in measuring both intended and unintended outcomes would benefit from adding this tool to their toolbox before they complete their final project year.</p> <p><b>Presenter:</b> Jason Torres Altman, Evaluator, TerraLuna Collaborative</p> <p><b>System Level:</b> State</p>	<b>Academy Hall</b>
<p><b><i>Individualized Learning Plan</i></b></p> <p>High-quality selection practices include designing an Individualized Learning Plan that is based in part, on information gained from the selection process but is also based on the existing knowledge, skills, abilities, and experiences of selected staff. The tool that will be shared is an Individualized Learning Plan. Its components would remain consistent; however, its contents would be individualized based on the needs of staff who will be supported by the plan.</p> <p><b>Presenter:</b> Kim St. Martin, Ph.D., MIBLSI Assistant Director</p> <p><b>System Level:</b> State</p>	<b>Vista Room A</b>
<p><b><i>The Latest and Greatest: FREE Resources from the National Center on Intensive Intervention</i></b></p> <p>This session will introduce you to 15 essential resources available from the National Center on Intensive Intervention. For each resource we will highlight the who, what, why, and how related to its use.</p> <p><b>Presenter:</b> Teri A. Marx, Ph.D., American Institutes for Research</p> <p><b>System Level:</b> State, Regional, District, Building</p>	<b>Vista Room B</b>

<p><b>Using the RACI model to enhance follow through</b></p> <p>The follow through on responsibilities for district team members has been inconsistent. To address this issue we are adapting the Responsible, Accountable, Consulted and Informed (RACI template) to engender public acknowledgement of, and commitment to fulfill roles and responsibilities.</p> <p><b>Presenter:</b> Peg Sullivan, Director, FL SPDG</p> <p><b>System Level:</b> District</p>	<p><b>Angle A</b></p>
<p><b>MTSS PBIS Advanced Tier External Evaluation</b></p> <p>This session will focus on fidelity instruments created to externally evaluate MTSS PBIS Tier 2 and Tier 3 implementation. These instruments are based on the PBIS Tiered Fidelity Inventory instrument. The purpose of the instruments is to inform schools, project leadership, and evaluators on the fidelity of PBIS implementation of the advanced Tiers. The results are also used to determine Model Site status. Once identified, Model Sites host other schools from across the state to share systems and products.</p> <p><b>Presenter:</b> Selina Merrell, M.S. Ed, Program Director</p> <p><b>System Level:</b> Building/District</p>	<p><b>Angle Room B</b></p>
<p><b>So You Finished Your Professional Learning Series. Now What?</b></p> <p>In this session, we will review the AZSPDG Creating a Sustainability Plan tool which is used as school sites progress through the professional learning series and plan for sustainability. The tool supports building leadership teams in processing how they will continue their implementation of systems change to include ongoing professional learning for staff and parents, continued coaching supports, data collection efforts, action planning and communication protocols for teams.</p> <p><b>Presenter:</b> Tracey Sridharan, Director AZ SPDG Stacy Riccio, Project Coordinator AZ SPDG</p> <p><b>System Level:</b> Building</p>	<p><b>Angle Room C</b></p>
<p><b>Participant's Memo for Training Events</b></p> <p>The Participant's Memo provides basic training information, funding sources, expectations &amp; preparations for participation, content coverage, and an indepth narrative about the consultant's credentials, including a photo. The tool is provided to participants several weeks prior to the training event.</p> <p><b>Presenter:</b> Theresa Farmer, M.A., SPDG Director, Alabama</p> <p><b>System Level:</b> State</p>	<p><b>Balcony Room D</b></p>

15 +15 continued on next page

<p><b>Using EWS Data to Influence Change</b></p> <p>The goal of The Middle School Success: The Path to Graduation (PA-SPDG) is to decrease risk factors that are related to dropout of students with EBD. The grant focuses on evidence-based interventions that target academic, behavior and secondary transition supports. The purpose of this session is to share tools utilized to examine middle school Early Warning System data. These data inform an LEA’s action plan that impacts student-level and systems-level change</p> <p><b>Presenter:</b> Tracy Ficca, MEd, Educational Consultant, Pennsylvania Jacki Lyster, MEd, Educational Consultant, Pennsylvania</p> <p><b>System Level:</b> State, District, Building</p>	<p><b>Balcony Room E</b></p>
<p><b>Creating Time for Data-Driven Direct Instruction in Balanced Literacy Schools</b></p> <p>Many schools utilize a balanced literacy approach with limited integration of data-driven, direct instruction. This presentation will focus on the use of tools to bridge the gap for these schools through concrete assessment planning and master scheduling that enables them to prioritize more explicit instruction to address students’ skill needs.</p> <p><b>Presenter:</b> Tatianna McBride, Ed.S., New Jersey Department of Education Jessica Hammond, Ed.D., New Jersey Department of Education Todd A. Glover, Ph.D., Rutgers University</p> <p><b>System Level:</b> State, District, Building</p>	<p><b>Balcony Lounge</b></p>





## Forum Sharing Session 1

9:00 – 9:40

<i>Forum Sharing - Session 1</i>	<i>Location</i>
<p><b><i>Building Capacity for Evidence-Based PD</i></b></p> <p>Ensuring that districts and regions create effective and sustainable professional development systems is a key component for scaling MTSS across Colorado. To this end, we have created a series of activities for MTSS leadership teams at the district- and regional-levels to align systems and initiatives, prioritize improvement areas, plan, and implement PD systems. During this forum presentation, I will present (a) the tools and guidance used to develop local capacity for systems alignment and evidence-based professional development, and (b) the performance evaluation system we have implemented to support continuous improvement of these efforts. In addition to sharing two years of performance evaluation data, the discussion will focus on gathering input from the audience on current implementation challenges and barriers.</p> <p><b>Presenter:</b> Andrew Schaper, PhD, MTSS Evaluation &amp; Research Coordinator, Colorado</p> <p><b>System Level:</b> Regional, District</p>	<b>Academy Hall</b>
<p><b><i>Using Media to Present Data</i></b></p> <p>Short film about Nevada's Assessment Plan Teach Project</p> <p><b>Presenter:</b> Julie Bowers Assisant Director Office of Inclusive Education - Nevada Department of Education</p> <p><b>System Level:</b> State, Regional, District, and Building</p>	<b>Vista Room A</b>
<p><b><i>Technology Tools for MTSS Alignment</i></b></p> <p>The presentation will focus on two uses of technology to support and align MTSS practices. A newly developed online platform for Tier III student support and data collection will be shared. Additionanline professional learning modules will be featured to demonstrate one method of reaching all audiences.</p> <p><b>Presenter:</b> Rondalyn Pinckney, Ed.S., Research &amp; Evaluation Specialist, Georgia Andrea Catalano, Ed.S., Professional Learning Specialist, Georgia</p> <p><b>System Level:</b> State</p>	<b>Vista Room B</b>

*Forum Sharing continued on next page*

## Forum Sharing - Session 1

## Location

<p><b><i>Effective Communication &amp; Engagement for a Collaborative MTSS Process</i></b></p> <p>This presentation will outline effective communication practices and engagement strategies utilized to build a collaborative MTSS process. Examples of various strategies will be shared including video segments used for messaging to students, teachers, leaders, families, and community members.</p> <p><b>Presenter:</b> Carole Carr, BA, Communications, Visibility, &amp; Family and Community Engagement Specialist Karen Suddeth, Ed.S. SPDG Project Director and MTSS Program Manager, Georgia</p> <p><b>System Level:</b> State</p>	<p><b>Angle Room A</b></p>
<p><b><i>Professional Learning: Walking the Walk</i></b></p> <p>An ever-expanding research base on learning and the brain provides the model for structuring professional learning, growth, and development based on principles of andragogy. We will explore the 3 T's of professional learning to ensure that we are teaching for learning.</p> <p><b>Presenter:</b> Kate Martin, MEd, Senior Director of Special Education, Tennessee</p> <p><b>System Level:</b> State</p>	<p><b>Angle Room B</b></p>
<p><b><i>Preparing, Retaining, Aligning SPDG Staff</i></b></p> <p>Technical assistance and other SPDG related supports require staff competencies to be high-quality and aligned to project outcomes. This session will outline steps for how to prepare new and existing staff (post selection) to successfully demonstrate job responsibilities. Resources like a post-selection Staff Orientation and Individualized Learning Plan along with other tools for preparing and retaining staff will be provided to participants.</p> <p><b>Presenter:</b> Kim St. Martin, Ph.D. MIBLSI Assistant Director</p> <p><b>System Level:</b> State</p>	<p><b>Angle Room C</b></p>
<p><b><i>IRIS Resources on High-Quality IEPs</i></b></p> <p>The Endrew F. Supreme Court case clarified the substantive standard for determining whether a student's IEP is sufficient to enable him to make progress in light of his circumstances. But what exactly are high-quality IEPs and how can States and districts ensure that their educators are adequately prepared to develop them? In this session, we'll look at IRIS's two new interactive learning modules and discuss how these can be used in professional learning to improve the quality of IEPs.</p> <p><b>Presenter:</b> Tanya Collins, Technical Assistance Coordinator, IRIS Center</p> <p><b>System Level:</b> State, District, Building</p>	<p><b>Balcony Room D</b></p>

*Forum Sharing - Session 1*

*Location*

***Making Sense of the Evidence in Evidence-Based***

This session will introduce the Taxonomy of Intervention Intensity (Fuchs, Fuchs, & Malone, 2017), a system for describing evidence-based intervention in terms of seven dimensions along which intensity can vary. The Taxonomy has utility when selecting or reviewing an intervention and when further intensifying an intervention to support students with intensive needs. Examples of the Taxonomy’s use within SPDG projects will be shared.

**Presenter:** Teri A. Marx, Ph.D., American Institutes for Research  
Casey Dupart, Utah State Board of Education

**System Level:** State, Regional, District, Building

**Balcony Room E**



# Forum Sharing Session 2

9:50 – 10:30

<i>Forum Sharing - Session 2</i>	<i>Location</i>
<p><b><i>Behavioral Supports and Coaching for MTSS Implementation</i></b></p> <p>We will discuss the layers of support involved in implementation of behavioral supports within an MTSS framework.</p> <p><b>Presenter:</b> Kristen Perez-Rickels, MEd, SPDG Behavior Specialist, Oklahoma Mary Ann Shepherd, Ph.D BCBA-D, Behavior Consultant, Oklahoma</p> <p><b>System Level:</b> State, District</p>	<p><b>Academy Hall</b></p>
<p><b><i>Educator Shortages in Special Education Toolkit</i></b></p> <p>This session will highlight the GTL Center and CEEDAR Center’s Educator Shortages in Special Education Toolkit that is designed to lead state teams through a collaborative process that examines shortages across the career continuum and helps to establish a comprehensive approach including both short- and long-term strategies - for addressing shortages. This toolkit provides tools and implementation resources to guide data-informed decision-making, collaborative planning, and continuous improvement.</p> <p><b>Presenter:</b> Mary Brownell, Director, CEEDAR, University of Florida Amy Colpo, TA Specialists, CEEDAR, AIR</p> <p><b>System Level:</b> State, District</p>	<p><b>Vista Room A</b></p>
<p><b><i>Title IIA – Supporting All Educators Through Professional Learning</i></b></p> <p>Every educator deserves access to high quality professional learning to be able to serve the needs of all children. The Every Student Succeeds Act includes a definition of professional development that is consistent with the Learning Forward Standards for Professional Learning. Join us in this session to learn about critical professional development supported by Title IIA, the Supporting Effective Instruction Grants, and the impact that it is making for educators and students.</p> <p><b>Presenter:</b> Melinda George, Learning Forward Elizabeth Foster, Vice President, Research and Standards, Learning Forward</p> <p><b>System Level:</b> State, District</p>	<p><b>Vista Room B</b></p>

*Forum Sharing - Session 2*

*Location*

<p><b><i>Breaking the Mold of Tradition</i></b></p> <p>Shifting the focus of the statewide system of professional development (PD) to be on coaching has required breaking the mold of tradition. This transformation has pushed PD providers outside of their comfort zones; but yet increased statewide collaboration and shared learning. This presentation will describe Missouri's journey to transform the statewide systems of support and our next steps because this new model is yet fragile.</p> <p><b>Presenter:</b> Ronda Jenson, Consultant, Missouri SPDG Ginger Henry, Coordinator of Services, Missouri SPDG</p> <p><b>System Level:</b> State</p>	<p><b>Angle A</b></p>
<p><b><i>Teacher Recruitment and Retention: Indiana Strategies</i></b></p> <p>The recruitment and retention of special education teachers, particularly in high need districts, has been a long standing concern of educators and policymakers. This presentation will focus on varied strategies being developed and implemented in Indiana to recruit and retain special education teachers. The presentation will provide concrete examples with handouts for participants.</p> <p><b>Presenter:</b> Sandi Cole, Ed.D., Director, Center on Education and Lifelong Learning, Indiana University; Indiana SPDG Project Co-Director Kristen Sievers, Senior Special Education Specialist, Indiana Department of Education</p> <p><b>System Level:</b> State</p>	<p><b>Angle B</b></p>
<p><b><i>Use of tools to promote alignment and measure impact in Iowa</i></b></p> <p>Iowa's SPDG has four strands that develop/identify content, resources and professional learning opportunities that promote the use of SDI practices. We will discuss the ways in which grant-developed tools have facilitated alignment across the strands. We will also discuss the ways in which these tools have helped Iowa to monitor and evaluate SDI.</p> <p><b>Presenter:</b> Shelly Menendez, PhD, Evaluator, Iowa Eric Gebhart, Education Program Consultant, Iowa Consultant, Iowa</p> <p><b>System Level:</b> State</p>	<p><b>Angle C</b></p>

*Forum Sharing Session 2 continued on next page*

*Forum Sharing - Session 2*

*Location*

<p><b><i>Working Smarter: Aligning the Work of SPDGs and SSIPs</i></b></p> <p>State leaders from Arkansas, Colorado and Virginia have piloted the used of NCSI's SSIP Infrastructure Development Rubric and Planning Tool. This tool supports state leaders and their stakeholders to reflect on the implementation drivers to create a focus for improvement planning through the alignment and integration of multiple improvement efforts in the state (including the work of SPDGs), to positively advance infrastructure refinements in order to work smarter and increase the sustainability of the SSIP to ensure strong outcomes for students with disabilities.</p> <p><b>Presenter:</b> Sophia Farmer, MT, Director VTSS RIC, Virginia Jeff Adams, Ed.D., CCC-SLP, State Systemic Improvement Plan Coordinator Arkansas Department of Education Division of Elementary and Secondary Education-Special Education Unit Tiah Frazier, Director State Personnel Development Grant Arkansas Department of Education Division of Elementary and Secondary Education</p> <p><b>System Level:</b> State</p>	<p><b>Balcony D</b></p>
<p><b><i>System considerations for successful implementation of tier 3 supports</i></b></p> <p>Intensive supports for students involves more than effective practices. These supports require systems that ensure the student has access to effective interventions, evaluation to ensure progress and supports for the implementers to ensure that the interventions are implemented with fidelity. This session will highlight critical systems features needed for effective tier 3 supports.</p> <p><b>Presenter:</b> Steve Goodman, Ph.D. Teri Marx, Ph.D., American Institutes for Research</p> <p><b>System Level:</b> State, District</p>	<p><b>Balcony E</b></p>

# Resource Leveraging Jigsaw Activity

## READER #1

### ***Resource Leveraging to Achieve Large-Scale Implementation of Effective Educational Practices*** (Horner et al., 2019)

This jigsaw activity is an opportunity to learn about the following:

- How to measure the resources it takes to implement a program with fidelity.
- How to use those measurements to determine the resources necessary to scale up the program.
- How to create a plan based on these determinations.

*This activity is also an opportunity to consider what the authors' recommendations mean for your SPDG/State.*

#### **Directions**

1. Spend 15 minutes reading your document (*you can focus on the highlighted sections*) and thinking about the questions below. Note that “your” section has been highlighted in the document (*your unique section begins after page 70*).
2. Be prepared to share your thoughts about the section and choose at least 3 questions (below) to consider.
3. Find (*up to 2*) people who have a different section (*note there are 3 sections*).
4. Each person gets 10 minutes to lead the discussion:
  - a. First, summarize the information about your section.
  - b. Second, share your thinking about your questions.
  - c. Third, ask for the other participant’s thoughts on those questions.

#### **Questions to consider prior to your discussion:**

1. “An effective technology of resource leveraging requires delineation of typical resource categories and standards for monetizing those resources.” (pg 70)
  - a. What are the typical resource categories you consider when thinking about piloting or replicating your program in various sites?
  - b. How do you monetize those resources?
2. “Leveraging resources for large-scale implementation often involves not only accessing new funds and repurposing existing resources but also modifying piloted implementation procedures to achieve economies of scale that make large-scale implementation possible.” (pg 70)
  - a. What existing resources have you repurposed when replicating/scaling up your initiative?
  - b. What procedures have you changed to make scale up possible?
3. What are some potential challenges to monetizing typical categories for piloting or scale up?
4. What are potential facilitators to monetizing typical categories for piloting or scale up?

# Resource Leveraging Jigsaw Activity

## READER #2

### ***Resource Leveraging to Achieve Large-Scale Implementation of Effective Educational Practices (Horner et al., 2019)***

This jigsaw activity is an opportunity to learn about the following:

- How to measure the resources it takes to implement a program with fidelity.
- How to use those measurements to determine the resources necessary to scale up the program.
- How to create a plan based on these determinations.

*This activity is also an opportunity to consider what the authors' recommendations mean for your SPDG/State.*

#### **Directions**

1. Spend 15 minutes reading your document (*you can focus on the highlighted sections and your numbered paragraphs*) and thinking about the questions below. Note that “your” paragraphs have the number 2 next to them (*your unique section begins after page 70*).
2. Be prepared to share your thoughts about the section and consider the questions below.
3. Find a Reader #1 and a Reader #2.
4. Each person gets 10 minutes to lead the discussion:
  - a. First, summarize the information about your section.
  - b. Second, share your thinking about your questions.
  - c. Third, ask for the other participant's thoughts on those questions.

#### **Questions to consider prior to your discussion:**

1. “This consolidation and repurposing of resources is an illustration of leveraging in which investment in an initial demonstration resulted in a more substantial allocation of resources to the multitiered approach, although a significant proportion of the new support came from reallocation of resources previously allocated to other initiatives.” (pg 70)
  - a. Can you provide examples of consolidating and repurposing resources from your State's work?
2. What challenges might prevent a State from measuring the value of resources allocated to the initiative at two points in time?
3. “How does the initial efficiency and practicality of a practice (e.g., ease of use) affect the level of leveraging needed for scaling?” (pg 70/71)
  - a. Specifically, how have you made your initiative more efficient or practical over time?



# Resource Leveraging Jigsaw Activity

## READER #3

### ***Resource Leveraging to Achieve Large-Scale Implementation of Effective Educational Practices*** (Horner et al., 2019)

This jigsaw activity is an opportunity to learn about the following:

- How to measure the resources it takes to implement a program with fidelity.
- How to use those measurements to determine the resources necessary to scale up the program.
- How to create a plan based on these determinations.

*This activity is also an opportunity to consider what the authors' recommendations mean for your SPDG/State.*

#### **Directions**

1. Spend 15 minutes reading your document (*you can focus on the highlighted sections and your numbered paragraphs*) and thinking about the questions below. Note that your paragraphs are numbered "3" and begin on page 71.
2. Be prepared to share your thoughts about the section and consider the questions below.
3. Find Readers #1 and #2
4. Each person gets 10 minutes to lead the discussion:
  - a. First, summarize the information about your section.
  - b. Second, share your thinking about your questions.
  - c. Third, ask for the other participant's thoughts on those questions.

#### **Questions to consider prior to your discussion:**

1. "Our experience is that an important element when budgeting for large-scale implementation is to adjust not only the amount budgeted but also the timeline for the larger goal. A consistent trap with state implementation efforts is the tendency to budget large-scale efforts within timelines that are insufficient to build the capacity for sustainability (McIntosh, Filter, Bennett, Ryan, & Sugai, 2010)."
  - a. Have you experienced this before? If yes, please describe the basic ideas of what occurred to the other readers?
  - b. What could prevent States from falling into this trap?
2. "The second mechanism by which leveraging produces functional effects is in the more subtle modification of policies and standard operating procedures."
  - a. What policies and/or procedures have been changed to help your initiative's implementation?
  - b. What policies or procedures might be changed in the future to facilitate implementation?
3. "The third way in which leveraging affects large-scale adoption of new practices is through reallocating existing resources."
  - a. Has your State reallocated existing resources to effective initiatives?
    - i. How was this done?
    - ii. Where there challenges to the process?
    - iii. How could the process be facilitated

# Resource Leveraging to Achieve Large-Scale Implementation of Effective Educational Practices

Journal of Positive Behavior Interventions  
2019, Vol. 21(2) 67–76  
© Hammill Institute on Disabilities 2018  
Article reuse guidelines:  
sagepub.com/journals-permissions  
DOI: 10.1177/1098300718783754  
jpbj.sagepub.com  


Robert H. Horner, PhD<sup>1</sup>, Caryn S. Ward, PhD<sup>2</sup>,  
Dean L. Fixsen, PhD<sup>2</sup>, George Sugai, PhD<sup>3</sup>,  
Kent McIntosh, PhD<sup>1</sup>, Robert Putnam, PhD<sup>4</sup>,  
and Hannah D. Little, MHA<sup>5</sup>

## Abstract

We propose in this article that a central element in the large-scale implementation of evidence-based practices is the process by which initial investment in local demonstrations is leveraged into larger implementation efforts. We offer a definition of this “resource leveraging” and propose a process for both measuring and reporting the effects of leveraging. We suggest that resource leveraging become a valid focus of future research and that the intentional measurement, planning, and management of resource leveraging be used to improve the scaling-up of effective practices.

## Keywords

resource leveraging, implementation, scaling, PBIS

*Resource leveraging* is the process by which the outcomes from initial investment in personnel, materials, and events to achieve a targeted goal result in additional investment toward that goal. The assumption governing this concept is that without an initial, small investment, larger future investments are less likely (Rogers, 2003). Our thesis is that large-scale implementation of evidence-based educational practices often requires that initial implementation investments be used to leverage the size, scope, and sustained investment needed for scaling to occur. The purposes of this article are to offer a more operational definition of “resource leveraging,” encourage the measurement of leveraging, and propose that leveraging be considered not just a topic of conceptual interest, but a formal tactic for any long-range implementation plan. We believe that the intentional measurement, planning, and management of resource leveraging will improve our ability to scale up effective practices.

It is appropriate to consider the role that resource leveraging plays in education given the current emphasis on adopting evidence-based practices (Cook & Odom, 2013; Flay et al., 2005; Horner, Sugai, & Anderson, 2010) and the articulation of implementation science (Fixsen et al., 2010; Fixsen, Naoom, Blase, Friedman, & Wallace, 2005; Horner, Sugai, & Fixsen, 2017). Interest in improving educational and community services has drawn from the growing movement in medicine to define and promote the use of practices that are evidence-based (Kellam & Langevin, 2003). The essential logic is that, as a society, resources are wasted when we invest in practices that are ineffective,

minimally effective, or less effective than available alternatives. Instead, we should use rigorous science to develop practices that are efficient and effective and use implementation strategies to make these practices available, sustainable, and scalable.

## Evidence-Based Practice

The arguments in favor of promoting evidence-based practices are compelling but become more elusive when considered in detail. Medicine, psychology, and education are each engaged in debates about what constitutes evidence-based (Gersten et al., 2005; Kratochwill et al., 2010; Shavelson & Towne, 2002). Slocum et al. (2014) defined evidence-based practices broadly as any decision-making process that combines “(a) the best available evidence with (b) clinical expertise and (c) client values and context” (p. 44). For Slocum et al., it is the use of data by clinicians to

<sup>1</sup>University of Oregon, Eugene, USA

<sup>2</sup>The University of North Carolina at Chapel Hill, USA

<sup>3</sup>University of Connecticut, Storrs, USA

<sup>4</sup>May Institute, Quincy, MA, USA

<sup>5</sup>Johns Hopkins Bloomberg School of Public Health, Baltimore, MD, USA

### Corresponding Author:

Robert H. Horner, Educational and Community Supports, University of Oregon, 1235 University of Oregon, Eugene, OR 97403-1235, USA.  
Email: robh@uoregon.edu

**Action Editor:** Wendy Oakes

achieve socially valued outcomes that make a practice evidence-based. Flay et al. (2005) focused more narrowly on specific treatments or procedures and offer useful guidance in their recommendation that an evidence-based practice is defined when (a) the observable components or procedures of a practice are defined with operational precision, (b) the valued outcome(s) of the practice is formally articulated, (c) the requirements of the implementer(s) (e.g., physician, school psychologist) are specified, and (d) the targeted population(s) and settings are clear. In essence, Flay et al. argued that an evidence-based practice cannot be defined without context. We need to know what the practice is, for whom it is intended, what it will accomplish, and the qualifications of those who use it. Describing a practice or program as evidence-based without stipulating the context is not helpful and leads to poor implementation planning.

### Implementation Science

The self-discipline that Flay et al. (2005) encourage for defining evidence-based practices is well matched with the companion emergence of implementation science (Damschroder et al., 2009; Fixsen et al., 2005). Implementation science is defined in the health arena as “. . . the study of methods to promote the integration of research findings and evidence into health care policy and practice” (Fogarty International Center, 2016), and in education as “the study of factors that influence the full and effective use of innovations in practice” (National Implementation Research Network, 2015). A central tenet of implementation science is a series of stages that guide adoption and use of new practices (Fixsen et al., 2010). Within education, the unit of analysis for these stages typically is the school, where a team is expected (a) to *explore* the need and fit of a new practice, (b) then *install* the necessary structures (e.g., data collection, team operations, policies) needed for effective implementation, (c) then complete *initial implementation* of the practice, and finally (d) to reach *full implementation* of practices and systems needed for sustainability and scaling of the practice. A team may be in more than one stage at a time. For example, a school leadership team may be exploring new approaches to math instruction while educators are already engaged in initial implementation of an effective literacy innovation. Fixsen et al. (2010) pointed out that the stages of implementation are iterative in the sense that as new teams within a system encounter the new practice (e.g., additional schools or district), they require time to revisit the exploration stage and progress through the full implementation process.

The value of a stage-based vision of implementation is especially helpful in a complex system such as education, where schools are operated within districts, and districts are operated within both regions and states. The initial adoption of a practice at a school (or small cluster of schools) may be the decision of teams at the school(s) (and possibly the

district). As such, the processes of exploration, installation, and initial implementation may be local and require modest investment. The process of scaled implementation across a larger district, region, or state, however, is likely to require not only school-level team processing but also consideration by multiple teams at the district (and/or region/state). Our experience is that more substantial investment by teams at the district, region, and/or state is more likely if there is evidence that initial, smaller investment has been successful. This smaller investment (and the resulting outcomes) is then used to leverage access to the resources needed for large-scale implementation. A better understanding of when, where, and how leveraging occurs within the iterative stages of implementation may be helpful for improved efficiency and effectiveness of scaling efforts within education and across an array of disciplines.

### Positive Behavioral Interventions and Support (PBIS) as an Example of an Evidence-Based Practice Brought to Scale

Our collective experience with large-scale implementation is informed primarily by work focused on PBIS. PBIS is a multitiered framework for establishing the school-wide social culture as well as the individualized behavior supports needed for schools to be effective learning environments (Horner et al., 2010; Lewis & Sugai, 1999; Simonsen, Sugai, & Negrón, 2008; Sugai & Horner, 2009). PBIS integrates effective practices, functional systems, and data-based decision making. The broader framework of PBIS meets the criteria proposed by Slocum et al. (2014), and the specific procedures of Tier I, Tier II, and Tier III PBIS fit the more narrow criteria proposed by Flay et al. (2005). PBIS currently is being implemented in more than 25,000 schools in the United States (Sugai, 2017). Effective implementation of school-wide PBIS has been linked with significant reductions in disruptive behaviors and improved social skill knowledge (Barrett, Bradshaw, & Lewis-Palmer, 2008; Horner et al., 2009; Metzler, Biglan, Rusby, & Sprague, 2001; Sprague et al., 2001). Specifically, several studies, including two randomized controlled studies of school-wide PBIS in elementary schools, have shown that high-quality implementation of the model is associated with significant reductions in office discipline referrals and suspensions (Bradshaw, Mitchell, & Leaf, 2010; Horner et al., 2009) and other problem behavior (McIntosh, Bennett, & Price, 2011), such as teacher ratings of classroom behavior problems, concentration problems, emotion regulation problems, and bullying (Bradshaw, Waasdorp, & Leaf, 2015; Waasdorp, Bradshaw, & Leaf, 2012). Significant improvements also have been observed in student reports

of school climate (Horner et al., 2009; McIntosh et al., 2011), staff reports of the school's organizational health (e.g., principal leadership, teacher affiliation, and academic emphasis; Bradshaw, Koth, Thornton, & Leaf, 2009; Bradshaw, Reinke, Grown, Bevans, & Leaf, 2008; McIntosh et al., 2011), teacher self-efficacy (Kelm & McIntosh, 2012; Ross & Horner, 2007), and academic achievement (Bradshaw et al., 2010; Horner et al., 2009; McIntosh et al., 2011).

Twenty-one states each have over 500 schools currently engaged in implementing PBIS, and California alone reports over 2,400 schools using PBIS. Horner et al. (2014) recently reviewed the history of seven states that successfully implemented PBIS with at least 500 schools and found through formal interviews that a key step in the implementation process was the development of an initial demonstration of effect, and use of outcomes from this demonstration to recruit resources for scaling. The question of relevance for this article is, "What lessons have been learned regarding the role that resource leveraging has played in states where PBIS implementation has been more dramatic and sustained?" To address this question, we propose to explore with more precision a definition of resource leveraging and examine both the measurement of resource leveraging, and the procedures for effective leveraging within implementation.

## Resource Leveraging Defined

The current definition of resource leveraging put forth above—a process by which the outcomes from the initial investment in personnel, materials, and events to achieve a targeted goal result in additional investment being allocated toward that goal—is helpful from a conceptual perspective but requires unpacking to be operationalized. Specifically, functional definitions are needed for the following elements:

### Organizational Unit

The organizational unit must be defined to assess leveraging. The organizational unit should have a clearly defined organizational chart that identifies personnel roles and a budget that includes the costs associated with variables such as allocation of personnel, materials, and space. For example, is the unit of analysis a school, district, state, or some other defined organization?

### Outcome/Initiative

Implementation efforts typically focus on the use of practices (e.g., Early Reading Intervention: Carmine, 1997, First Step to Success: Walker et al., 1998, PBIS: Sugai & Horner, 2014) that are associated with valued outcomes (e.g., improved literacy, improved school-wide social culture, or

improved classroom behavior). Effective resource leveraging requires precise designation of the practice or practices being considered. The value of also defining the outcome expected from a practice or initiative is that multiple practices/initiatives that have the same outcome(s) may be considered in concert.

### Analysis Time frame

Assessing the impact of leveraging requires identifying at least two points in time (and often more) and comparing the resources allocated to an initiative at each point in time. As such, specifying the time frame for a leveraging analysis is essential. The selection of points in time (e.g., Time 1 and Time 2) in a leveraging analysis will often be determined more by evaluation and political considerations than is traditional in formal research studies. Nearly all elementary schools, for example, have some ongoing level of investment in early literacy and school-wide social culture. The definition of Time 1 may be during an initial baseline level of investment within a district, and Time 2 may be the point when additional investment is made to launch a pilot or demonstration effort with a small cohort of schools. Time 3 may be the point when the pilot results are used as the initial proof of concept to scale the initiative to all elementary schools in the district, region, or state. Points in time will be determined differently depending on the evaluation question and set of initiatives under analysis. Our message is that there is not one correct time frame; instead, all leveraging assessments require operational documentation of the points in time that are being compared, as well as the rationale for selecting those points in time.

### Resource Allocation

The key to any assessment of leveraging is the ability to define and monetize the resources (e.g., personnel, events, and materials) allocated to achieve an outcome or implement an initiative. Resources allocated at Time 1 are compared with the resources allocated at Time 2, Time 3, and so on.

### Example

An operational definition of leveraging is framed for a specified organizational unit and a targeted outcome or initiative. The metric for leveraging is the change in resources allocated to achieve the outcome (new resources added or existing resources repurposed) from one time to another. In this example, consider a Midwestern state that received a federal grant for US\$1.3 million per year, for each of 5 years to improve the social culture and reduce the rate of problem behavior in schools throughout the state. The state department of education selected PBIS as their approach to

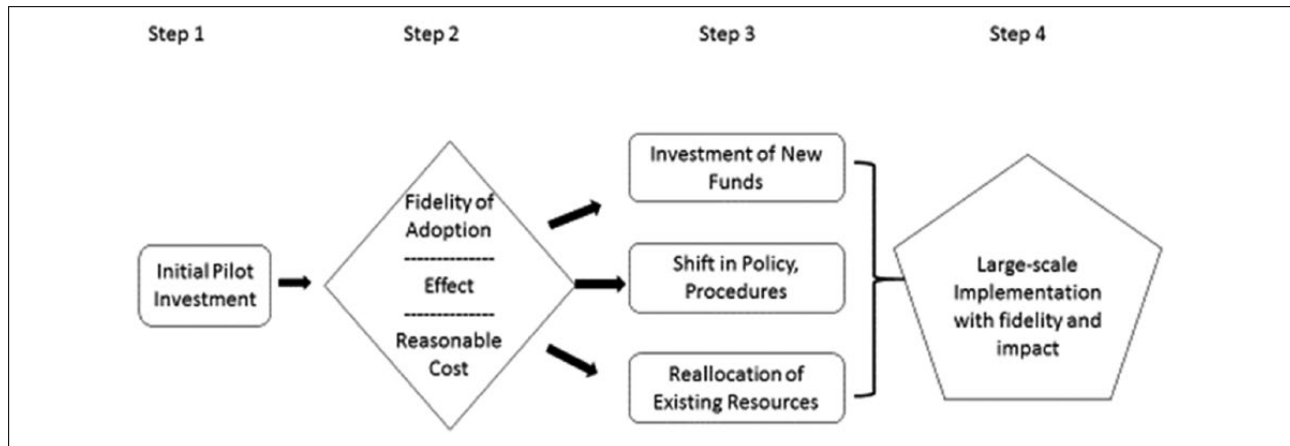
1 achieve this outcome and set up a state-wide technical assistance unit with the task of working with pilot districts and schools to implement PBIS and document student benefits. The results of this initial, small scale, effort were encouraging. After 3 years, 65 schools across five districts were documenting that they had adopted PBIS and were implementing with adequate fidelity. Participating districts were able to build the training, coaching, data analysis, and leadership capacity needed for sustainability. Student outcomes in participating schools indicated (a) reduction in problem behavior and improvements in behavior climate, (b) increased rates of attendance, and (c) improved levels of oral reading fluency. Based on these demonstrated results, the state department of education consolidated less effective projects, and used the pilot results to write for additional federal funding. Five years after their initial launch, the district had a combined budget from federal, state, and foundation sources of US\$5.8 million per year allocated to their state technical assistance unit for implementation of PBIS to improve the social culture of schools throughout the state. This could easily be a simple story demonstrating leveraging of an initial federal investment in Year 1 (US\$1.3 million per year) to gain new federal, state, and foundation investment at Year 5 (US\$5.8 million per year). Without the initial investment (and resulting demonstration of success), the later set of investments would have been unlikely. But even this process hides the resources (mostly the time of personnel) in each school that were present in Year 1, but are being used differently (i.e., repurposed) in Year 5 to train, coach, and perform the activities that makeup Tier 1 PBIS. Leveraging becomes more nuanced with each stage of implementation and more detailed knowledge of the local context. An effective technology of resource leveraging requires delineation of typical resource categories and standards for monetizing those resources. This message is especially relevant as new practices are piloted prior to larger scale implementation. The pilot may be successful at demonstrating that the practice is effective, but typically a pilot includes costs that would make scaling prohibitive. Leveraging resources for large-scale implementation often involves not only accessing new funds and repurposing existing resources but also modifying piloted implementation procedures to achieve economies of scale that make large-scale implementation possible.

## 2 Resource Leveraging Measured

Understanding any process typically involves observation, definition, and measurement. We believe that a useful understanding of resource leveraging will require agreement about its definition, development of formal measurement procedures, and repeated observation. Of these steps, measurement may be the most challenging. It may be easy to conceptualize the unit of measure (e.g., U.S. dollars),

but the process of assigning a monetary value to noncash resources, and determining which assets to figure into the valuation, requires a standard set of assumptions. Because the basic logic of leveraging is investment, and changing the level of investment focused on a targeted outcome or initiative, it is reasonable to use dollars (currency) as the unit of measure. Many forms of investment are simple allocations of funds (making the counting of dollars obvious). Other forms of investment are tied to how personnel spend their time, the use of buildings, allocation of materials and equipment, existing professional development events, and the opportunity cost of not doing other valued activities. One New England district, for example, recently shifted allocation of personnel and training resources from a model that involved seven different initiatives focused on social skills, bully prevention, and mental health supports (none of which was associated with clear evidence of positive effects) to a unified, multitiered approach for establishing a positive social culture with targeted and individualized supports for students at risk. The result was not a net increase in resources allocated to improve the social culture in their schools, but a consolidation and repurposing of resources that elevated the support targeting their multitiered approach. This consolidation and repurposing of resources is an illustration of leveraging in which investment in an initial demonstration resulted in a more substantial allocation of resources to the multitiered approach, although a significant proportion of the new support came from reallocation of resources previously allocated to other initiatives.

Economists have long focused on the care needed to assign a monetary value to activities within organizations (Blonigen et al., 2008). The tools for valuing an array of investments and comparing the real value of dollars invested at different points in time (discounting) are important elements of any leveraging analysis. If, however, we can identify (a) an organization, (b) a targeted outcome (or initiative), (c) at least two points in time, and (d) the value of resources allocated to that outcome or initiative at each point in time, there remains the task of defining the final metric to assess resource leveraging. The most obvious approach is to divide the resources at Time 2 by the resources at Time 1. From our example above, if US\$5.8 million was invested in PBIS implementation at Time 2 and US\$1.3 million was invested at Time 1, then  $5.8 / 1.3 = 4.46$ . The resources at Time 2 were US\$4.5 million more than at Time 1 or, framed differently, the resources at Time 2 were 4.46 times the resources at Time 1 (assuming constant dollar value across years). Finding agreement on the specifics of how leveraging is measured and described will open opportunities to ask questions, such as “What level of leveraging is needed to scale a proven practice across all schools in a district/state?” or “How does the initial efficiency and practicality



**Figure 1.** Elements of resource leveraging: Initial pilot investment provides proof of concept that is used to leverage (a) new (larger) funding, (b) policy shifts needed for efficient implementation, and (c) reallocation of existing resources (e.g., full time equivalent). *Note.* The result is a large-scale adoption of new practices with fidelity and impact.

of a practice (e.g., ease of use) affect the level of leveraging needed for scaling?"

Our underlying message is that if we are to consider resource leveraging as an important topic for consideration in the field, then educators, policy makers, evaluators, and researchers need to agree on standards related to definition and measurement.

### The Mechanism Driving Resource Leveraging

Our collective experience studying human behavior has left us with an appreciation for not only documenting patterns of behavior but also attending to the mechanism(s) associated with change (Cooper, Heron, & Heward, 2007). Any discussion of resource leveraging would be incomplete without some assumptions about how and why the process works. Figure 1 offers a logic model to help guide both discussion and future research. The process begins when initial exploration of options leads a group (e.g., a state department of education) to invest in the implementation of a set of procedures (e.g., PBIS) to achieve a given outcome (e.g., improvement in social and academic outcomes for students). The initial investment, however, is not made to influence the entire state, but only a pilot subset to serve as a proof of concept. The second step in this process is a formal determination of whether the new practice (a) can be implemented as intended (fidelity), (b) results in the valued effects that were promised, and (c) can be adopted at a feasible cost (i.e., fiscal, ethical). The move from Step 2 to Step 3 is the presumed point at which the experience from the initial investment can be used to leverage a larger investment. **Our experience is that although national research and demonstration efforts may be sufficient to induce a state or large district to invest in a pilot of some practice, it takes**

**local experience to spark the level and depth of commitment and investment needed for large-scale adoption.** If the evaluation experience at Step 2 can document fidelity, effect, and cost efficiency, the likelihood of investment in larger, more sustained implementation improves.

The mechanism by which this leveraging works is three-fold. First, additional funding is required to commit to scaling up a practice or program with demonstrated effectiveness. The level of funding used at Step 1 is typically a useful source of guidance, but the general assumption should be that the per-unit cost will decrease with a scaled effort. Our experience is that an important element when budgeting for large-scale implementation is to adjust not only the amount budgeted but also the timeline for the larger goal. A consistent trap with state implementation efforts is the tendency to budget large-scale efforts within timelines that are insufficient to build the capacity for sustainability (McIntosh, Filter, Bennett, Ryan, & Sugai, 2010).

The second mechanism by which leveraging produces functional effects is in the more subtle modification of policies and standard operating procedures. Policies and procedures facilitate adoption of new practices when they (a) prioritize the valued outcome (e.g., school-wide social culture), (b) stipulate regular measurement (and reporting) of the valued outcome, and (c) document allocation of larger system resources for supporting efforts to achieve that outcome (e.g., provide funding for training and technical assistance). In 2014, for example, the state of California defined school climate as a core outcome measure for schools, districts, and regions within the state, resulting in a rapid and productive shift toward adopting practical solutions to both measure and improve school-wide social culture.

The third way in which leveraging affects large-scale adoption of new practices is through reallocating existing resources. Major organizations (like states and urban

districts) are seldom able to adopt significant, new practices without reallocating some of the personnel, space, time, and dollars they already use for other purposes. Our experience with implementation of PBIS has been instructive. Most schools and districts considering adoption of PBIS have existing strategies for addressing student problem behavior including discipline codes, office referral procedures, and data systems. Adoption of PBIS practices becomes more feasible in these situations when leadership teams agree to (a) never terminate practices that are working, (b) implement the smallest changes that will produce the largest benefit for students, and (c) never introduce new PBIS procedures without defining what the faculty will stop doing to create the needed time. This often results in changing how weekly team meetings are managed; altering the role of school psychologists, counselors, and social workers; and adopting a more targeted protocol for collecting, summarizing, and using data for decision making

Resource leveraging starts with an initial, targeted investment and is dependent on documentation that a new practice is feasible, effective, and cost efficient. The mechanisms by which leveraging affects large-scale adoption of a new practice are (a) garnering access to new funding (especially the funding needed to transition from current to new procedures), (b) prompting the adoption of policies and procedures that ease and encourage implementation of new practices, and (c) reallocation of existing resources (especially in ways that will minimize ongoing costs associated with the new practices).

## The Role of Resource Leveraging in the Scaling of Evidence-Based Practices

We believe the importance of resource leveraging is an underappreciated variable affecting large-scale adoption of effective practices. The role and relevance of resource leveraging has become more operational as advocates of implementation science have articulated the four stages guiding implementation efforts (Fixsen et al., 2010): Exploration, Installation, Initial Implementation, and Full Implementation. The Exploration stage is when members of an organization determine whether a practice or initiative is necessary, possible, effective, and practical. This is the time for a team or community to determine whether they are ready to invest not just in a practice but in the valued outcome promised by that practice. The team of decision makers considers the value of what they are already doing and weighs this against the values, skills, administrative support, and resources needed to adopt something new. The central question during the Exploration stage is, "Should we get started on this new path?" The Installation stage involves assembling the capacity to launch implementation. The

training capacity, coaching capacity, and information systems needed for success often need to be linked in a coherent plan before initiating a new practice (Fixsen et al., 2005; Saldana, Chamberlain, Wang, & Brown, 2012). Initial Implementation is the stage where an organization builds demonstrations of a practice being implemented with impact, and simultaneously establishes the organizational capacity to scale up (Aladjem & Borman, 2006; Fixsen, Blase, Timbers, & Wolf, 2001; Schofield, 2004). Full Implementation is the stage where 50% or more units (e.g., schools) in an organization have adopted the new practice. Procedures are focused on establishing the efficiency and regeneration elements needed for continuous improvement, sustainability, and expansion (Fixsen et al., 2001; U.S. Department of Education, 2011).

Resource leveraging is relevant across all stages of implementation. Our experience is that for effective scaling of a practice to occur (a) resource leveraging needs to be considered as part of the readiness assessment and planning completed during the Exploration stage, (b) the Installation stage needs to include practical measurement of resources allocated to achieve implementation, (c) additional resources will be needed for Full Implementation beyond those initially allocated to reach the Initial Implementation stage, (d) the new resources needed for Full Implementation will often come from different sources than those funding Initial Implementation, (e) the process of implementation will need to become more efficient (less expensive per unit across the shift from Initial to Full Implementation), and (f) decisions related to allocation of more and/or different resources toward achieving Full Implementation of a new practice often require data from the Initial Implementation stage indicating that the practice can be adopted with fidelity and produces valued impact (Horner et al., 2014).

### Planning for Resource Leveraging

Implementation plans that consider resource leveraging typically include three key features. The first is the designation of a point in time when Initial Implementation efforts can be adequately evaluated. Decisions about resource leveraging should occur when the feasibility of implementing a new practice is apparent. A point in time should be established when evaluation will focus not only on questions about the implementation fidelity and impact of a new practice but about the level and type of resource allocation needed for shifting to large-scale adoption. Building the expectation that decisions about resource leveraging will be needed is an important first step toward achieving that outcome. Points in time should be selected when the impact on valued outcomes should be clear, and the practical costs associated with implementation should be calculable. Horner et al. (2014) report that the point in time when states have been most likely to shift from PBIS demonstrations to

scaled implementation has been after a state could point to 100 to 200 schools actively engaged in PBIS implementation. At this point, a larger team (or set of teams) did not simply expand the established implementation process, but started a new exploration stage with a larger implementation vision. It was at this point that leveraging occurred.

The second key planning feature is to focus Initial Implementation efforts not just on adoption of a new practice but on building the organizational capacity (e.g., training, coaching, policy, organization, data systems) that makes larger scale implementation easier and cheaper. During the Initial Implementation stage, an organization often relies on external sources (e.g., consultants, national experts) for training and coaching, existing recruitment and operating policies, and inadequate data systems. As part of the Installation and Initial Implementation stages, new data systems are adopted, local trainers and coaches are established, and more efficient organizational policies and procedures are defined. As an example, a district or state that moves into Full Implementation will often shift training events for school teams from infrequent, large, congregated events delivered by expensive experts to frequent, distributed events provided locally by district or state trainers and adapted to local community norms. Similarly, well-established steps in the implementation process and access to local, exemplar schools make adoption easier, faster, and less costly (McIntosh, Kelm, & Canizal Delabra, 2016; Rogers, 2003). The importance of this process is that at a point in time when decision makers are considering large-scale implementation of a new practice, they should consider how implementation efficiencies gleaned through Full Implementation of demonstration efforts can reduce the expense per school required for Full Implementation during a large-scale effort.

The third key feature is to plan for shifting sources of resources needed for leveraging. The classic example in education is to provide 2 to 5 years of funding for federal or state projects to transform how effective practices are used. The project funds are received from an external source (often the federal government) and are viewed as supplemental resources to cover transition costs. Too often this approach results in projects that use new funding to add new personnel to the system, have brief effects, and then return to prior performance outcomes upon withdrawal of the supplemental funding and the associated personnel (Adelman & Taylor, 2003; Klingner, Boardman, & McMaster, 2013). A central notion within a resource leveraging approach is that initial investment may be used more profitably to enhance the capacity and impact of current personnel and systems. Initial investment is most often conceived of as transitional in the sense that it should be used to support the transition from one approach to another. Investing in the training, redeployment, and systems resources (data-systems policies) needed to establish the new practice is more likely to

establish the capacity and impact needed for sustainability and scaling. Investing in additional personnel elevates the net cost to the system and is unlikely to produce sustained effects once the extra, transitional resources are expended.

From our experience, the resources needed for sustained and scaled efforts seldom come from the same source as the funds that allowed initial stage implementation. Sustained and/or scaling resources are much more likely to appear in the form of (a) reallocating existing personnel time; (b) repurposing materials, data systems, already available space, transportation, and management resources; and (c) extra resources from agencies more local to the host organization (e.g., states, foundations, regions, districts; Horner et al., 2014).

### An Example of Resource Leveraging

To frame the role of resource leveraging, we provide a somewhat oversimplified summary of two districts that exemplify our experience with several states and districts over the past decade. Assume that each district is composed of approximately 50 schools with a typical distribution of elementary, middle, and high schools, a population of approximately 30,000 students from diverse backgrounds, and a state department of education that required some form of planning and reporting related to school-wide social climate. Each district was successful in obtaining funding from their state, as part of a federal project, at a level of approximately US\$250,000 per year, for each of 3 years to establish multitiered behavior support. Each district established a district leadership team, utilized Exploration stage planning to select PBIS as their initiative focus, and built a plan for installation and initial implementation. The two districts also mirrored each other in their identification of eight to 10 schools to serve as an initial cohort for adoption. School teams were developed and trained by national experts across three or four major training events per year. The teams used the Tiered Fidelity Inventory (TFI; Algozzine et al., 2014) to assess the level of PBIS fidelity, and their local school information system to assess (a) office discipline referrals, (b) attendance, (c) suspension/expulsion, and (d) school climate.

After 24 months, both districts had documented success in their initial cohort schools. The schools were implementing Tier I PBIS at adequate fidelity of implementation as documented by their TFI scores, and the student outcomes were indicating reductions in problem behavior, improved attendance, and elevated levels of safety and school climate as rated by students. Informal student reports described a reduction in bullying. After 3 years, the two districts were each viewed with admiration for their overall success.

Two years later, one district's growth was stagnant, while the other had scaled up PBIS. The first district still had eight schools implementing Tier I PBIS, with six



maintaining adequate fidelity. The second district had 44 of their schools implementing PBIS, and these schools had extended implementation beyond Tier I to Tiers II and III. Although many variables may have contributed to the divergence in these implementation stories, we believe one major contribution lies in the effectiveness of the second district to leverage their initial investment. The second district used the success they documented in their first 2 to 3 years of PBIS implementation to argue for (a) another 3 years of support from their state (albeit at a lower level); (b) development of district trainers who were able to train new school teams in PBIS Tier I; (c) support for the use of school psychologists, counselors, and social workers in new roles as instructional and behavioral coaches; (d) development of district policies for selecting new staff with a focus on multitiered systems, redefining the role and opportunities for building administrators, and supporting school teams (e.g., protection of team meeting time, training in team problem solving, ensuring team access to fidelity and student outcome data); (e) investment in data systems that facilitated improved local (building-level) decision making; and (f) modification in the design and content of their existing district professional development efforts. **The second district used their district leadership team to align each of the different efforts in the district focused on the social behavior of students.** This alignment process resulted in then termination of two initiatives and the formal linking of school personnel and administrator training on PBIS, bully prevention, mental health services, and restorative practices efforts.

The cost in the initial 2 years to implement PBIS to Tier I fidelity in the initial nine schools in the second district averaged US\$12,000 per school above the standard, per school budget. The cost for additional new schools in this district to adopt PBIS at Tier I dropped to an estimated US\$5,000 per school of external funds. The improved efficiency was due largely to the fact that standard district and building funding categories were allocated for district trainers, coaches, data systems professional development, and behavior specialists engaged in PBIS implementation. We believe that the difference between these two stories of PBIS implementation lies in large part with the effectiveness of the district administrators and leadership team in the second district to leverage their initial investment.

## Summary

Documented advances in education will extend to a significant proportion of the 95,000 schools in the United States only if we become more skilled at scaling effective practices. Too many impressive instructional, classroom, and administrative practices have been developed, empirically validated, and piloted, only to be left unrequited. We believe that as education becomes more sophisticated in understanding and

using implementation science, one piece of the puzzle will be appreciation for the role of resource leveraging.

We propose that the leveraging of resources becomes a regular focus of all implementation efforts. Measurement of leveraging should become part of the evaluation requirements for federal and state implementation grants. Implementation plans developed by districts and states should include not just the steps for achieving initial implementation but also the anticipated additional funding, policy adaptations, and resource reallocations needed to take the new practice to scale. State and federal technical assistance units are well positioned to facilitate this process.

We also encourage the systematic study of resource leveraging. Districts and states throughout the nation are continually engaged in adoption of new practices and, in many cases, these practices are well-conceived, effective, and practical. However, in too few cases are these practices adapted to the local communities, sustained, and scaled. The study of any new content area typically begins with observation, measurement, and theory development. We hope our experience with PBIS may serve to launch larger consideration and attention to the potentially productive understanding of resource leveraging for improving education in the United States.

## Declaration of Conflicting Interests

The author(s) declared no potential conflicts of interest with respect to the research, authorship, and/or publication of this article.

## Funding

The author(s) disclosed receipt of the following financial support for the research, authorship, and/or publication of this article: Development of this article was supported by the Office of Special Education Programs, U.S. Department of Education (H326S980003 and H326K120005). Opinions expressed herein are those of the authors and do not necessarily reflect the position of the U.S. Department of Education, and such endorsements should not be inferred.

## References

- Adelman, H. S., & Taylor, L. (2003). On sustainability of project innovations as systemic change. *Journal of Educational and Psychological Consultation, 14*, 1–25. doi:10.1207/S1532768XJEP1404\_01
- Aladjem, D. K., & Borman, K. M. (2006). *Examining comprehensive school reform*. Washington, DC: Urban Institute Press.
- Algozzine, B., Barrett, S., Eber, L., George, H., Horner, R., Lewis, T., . . . Sugai, G. (2014). *School-wide PBIS tiered inventory*. OSEP Technical Assistance Center on Positive Behavioral Interventions and Supports. Available from www.pbis.org
- Barrett, S., Bradshaw, C., & Lewis-Palmer, T. (2008). Maryland statewide PBIS initiative: Systems, evaluation, and next steps. *Journal of Positive Behavior Interventions, 10*, 105–114. doi:10.1177/1098300707312541

- Blonigen, B., Harbaugh, W., Singell, L., Horner, R. H., Irvin, L. K., & Smolkowski, K. (2008). Application of economic analysis to school-wide positive behavior support (SWPBS) programs. *Journal of Positive Behavior Interventions, 10*, 5–19. doi:10.1177/1098300707311366
- Bradshaw, C. P., Koth, C. W., Thornton, L. A., & Leaf, P. J. (2009). Altering school climate through school-wide positive behavioral interventions and supports: Findings from a group-randomized effectiveness trial. *Prevention Science, 10*, 100–115. doi:10.1007/s1121-008-0114.9
- Bradshaw, C. P., Mitchell, M. M., & Leaf, P. J. (2010). Examining the effects of schoolwide positive behavioral interventions and supports on student outcomes: Results from a randomized controlled effectiveness trial in elementary schools. *Journal of Positive Behavior Interventions, 12*, 133–148. doi:10.1177/1098300709334798
- Bradshaw, C. P., Reinke, W. M., Grown, L. D., Bevans, K. B., & Leaf, P. J. (2008). Implementation of school-wide positive behavioral interventions and supports (PBIS) in elementary schools: Observations from a randomized trial. *Education and Treatment of Children, 31*, 1–26. doi:10.1353/etc.0.0025
- Bradshaw, C. P., Waasdorp, T. E., & Leaf, P. J. (2015). Examining variation in the impact of school-wide positive behavioral interventions and supports: Findings from a randomized controlled effectiveness trial. *Journal of Educational Psychology, 107*, 546–557.
- Carnine, D. (1997). Bridging the research-to-practice gap. *Exceptional Children, 63*, 513–521. doi:10.1177/001440299706300406
- Cook, B. G., & Odom, S. L. (2013). Evidence-based practices and implementation science in special education. *Exceptional Children, 79*, 135–144. doi:10.1177/001440291307900201
- Cooper, J. O., Heron, T. E., & Heward, W. L. (2007). *Applied behavior analysis* (2nd ed.). Upper Saddle River, NY: Pearson.
- Damschroder, L. J., Aron, D. C., Keith, R. E., Kirsh, S. R., Alexander, J. A., & Lowery, J. C. (2009). Fostering implementation of health services research findings into practice: A consolidated framework for advancing implementation science. *Implementation Science, 4*, 50. doi:10.1186/1748-5908-4-50
- Fixsen, D. L., Blase, K. A., Duda, M., Naoom, S., Van Dyke, M., Weisz, J. R., & Kazdin, A. E. (2010). Implementation of evidence based treatments for children and adolescents: Research findings and their implications for the future. In J. Weisz & A. Kazdin (Eds.), *Implementation and dissemination: Extending treatments to new populations and new settings* (2nd ed., pp. 435–450). New York, NY: Guilford Press.
- Fixsen, D. L., Blase, K. A., Timbers, G. D., & Wolf, M. M. (2001). In search of program implementation: 792 replications of the teaching-family model. In G. A. Bernfeld, D. P. Farrington, & A. W. Leschied (Eds.), *Offender rehabilitation in practice: Implementing and evaluating effective programs* (pp. 149–166). London, England: John Wiley.
- Fixsen, D. L., Naoom, S. F., Blase, K. A., Friedman, R. M., & Wallace, F. (2005). *Implementation research: A synthesis of the literature* (FMHI Publication #231). Tampa: University of South Florida, Louis de la Parte Florida Mental Health Institute, The National Implementation Research Network.
- Flay, B., Biglan, A., Boruch, R., Castro, F., Gottfredson, D., Kellam, S., . . . Ji, P. (2005). Standards of evidence: Criteria for efficacy, effectiveness and dissemination. *Prevention Science, 6*, 151–175. doi:10.1007/s1121005-5553-y
- Fogarty International Center. (2016). *Implementation science information and resources*. Available from <https://www.fic.nih.gov>
- Gersten, R., Fuchs, L. S., Compton, D., Coyne, M., Greenwood, C., & Innocenti, M. S. (2005). Quality indicators for group experimental and quasi-experimental research in special education. *Exceptional Children, 71*, 149–164. doi:10.1177/001440290507100202
- Horner, R. H., Kincaid, D., Sugai, G., Lewis, T., Eber, L., Barrett, S., . . . Johnson, N. (2014). Scaling up school-wide positive behavioral interventions and supports: The experiences of seven states with documented success. *Journal of Positive Behavioral Interventions, 16*, 197–208. doi:10.1177/1098300713503685
- Horner, R. H., Sugai, G., & Anderson, C. M. (2010). Examining the evidence-base for school wide positive behavior support. *Focus on Exceptional Children, 42*(8), 1–16.
- Horner, R. H., Sugai, G., & Fixsen, D. L. (2017). Implementing effective educational practices at scales of social importance. *Clinical Child and Family Psychology Review, 20*, 25–35. doi:10.1007/s10567-017-0224-7
- Horner, R. H., Sugai, G., Smolkowski, K., Eber, L., Nkasato, J., Todd, A., & Esperanza, J. (2009). A randomized, waitlist-controlled effectiveness trial assessing school-wide positive behavior support in elementary schools. *Journal of Positive Behavior Interventions, 11*, 133–144. doi:10.1177/1098300709332067
- Kellam, S. G., & Langevin, D. J. (2003). A framework for understanding “evidence” in prevention research and programs. *Prevention Science, 4*, 137–153.
- Kelm, J. L., & McIntosh, K. (2012). Effects of school-wide positive behavior support on teacher self-efficacy. *Psychology in the Schools, 49*, 137–147. doi:10.1002/pits.20624
- Klingner, J. K., Boardman, A. G., & McMaster, K. L. (2013). What does it take to scale up and sustain evidence-based practices? *Exceptional Children, 79*, 195–211. doi:10.1177/001440291307900205
- Kratochwill, T. R., Hitchcock, J., Horner, R. H., Levin, J. R., Odom, S. L., Rindskopf, D. M., & Shadish, W. R. (2010). Single case designs technical documentation. In *What Works Clearinghouse: Procedures and standards handbook (Version 2.0)*. Retrieved from <http://files.eric.ed.gov/fulltext/ED510743.pdf>
- Lewis, T. J., & Sugai, G. (1999). Effective behavior support: A systems approach to proactive schoolwide management. *Focus on Exceptional Children, 31*(6), 1–24.
- McIntosh, K., Bennett, J. L., & Price, K. (2011). Evaluation of social and academic effects of school-wide positive behaviour support in a Canadian school district. *Exceptionality Education International, 21*, 46–60.
- McIntosh, K., Filter, K. J., Bennett, J. L., Ryan, C., & Sugai, G. (2010). Principles of sustainable prevention: Designing scale-up of school-wide positive behavior support to promote durable systems. *Psychology in the Schools, 47*, 5–21. doi:10.1002/pits.20448
- McIntosh, K., Kelm, J. L., & Canizal Delabra, A. (2016). In search of how principals change: A qualitative study of events that

- help and hinder administrator support for school-wide PBIS. *Journal of Positive Behavior Interventions*, 18, 100–110. doi:10.1177/1098300715599960
- Metzler, C. W., Biglan, A., Rusby, J. C., & Sprague, J. R. (2001). Evaluation of a comprehensive behavior management program to improve school-wide positive behavior support. *Education and Treatment of Children*, 24, 448–479.
- National Implementation Research Network. (2015). *Implementation drivers: Assessing best practices*. Chapel Hill: Frank Porter Graham Child Development Institute, The University of North Carolina at Chapel Hill.
- Rogers, E. (2003). *Diffusion of innovations* (5th ed.). New York, NY: The Free Press.
- Ross, S. W. & Horner, R. H. (2007). Teacher outcomes of School-wide Positive Behavior Support. *Teaching Exceptional Children Plus*, 3(6). published on-line at <http://escholarship.bc.edu/education/tecplus/vol3/iss6/art6>.
- Saldana, L., Chamberlain, P., Wang, W., & Brown, C. H. (2012). Predicting program start-up using the stages of implementation measure. *Administration and Policy in Mental Health*, 39, 419–425. doi:10.1007/s10488-011-0363-y
- Schofield, J. (2004). A model of learned implementation. *Public Administration*, 82, 283–308. doi:10.1111/j.0033-3298.2004.00395.x
- Shavelson, R. J., & Towne, L. (Eds.). (2002). *Scientific research in education*. Washington, DC: The National Academies Press.
- Simonsen, B. M., Sugai, G., & Negron, M. (2008). Schoolwide positive behavior supports: Primary systems and practices. *Teaching Exceptional Children*, 40, 32–40.
- Slocum, T. A., Detrich, R., Wilczynski, S. M., Spencer, T. D., Lewis, T., & Wolfe, K. (2014). The evidence-based practice of applied behavior analysis. *Behavior Analyst*, 37, 41–56. doi:10.1007/s40614-014-0005-2
- Sprague, J., Walker, H., Golly, A., White, K., Myers, R., & Shannon, T. (2001). Translating research into effective practice: The effects of a universal staff and student intervention on indicators of discipline and school safety. *Education and Treatment of Children*, 24, 495–511.
- Sugai, G. (2017, September 28). *Introduction to PBIS*. Presentation at the Positive Behavioral Interventions and Supports Implementer's Forum, Chicago, IL.
- Sugai, G., & Horner, R. H. (2009). Defining and describing schoolwide positive behavior support. In W. Sailor, G. Dunlap, G. Sugai, & R. Horner (Eds.), *Issues in Clinical Child Psychology Series. Handbook of positive behavior support* (pp. 307–326). New York, NY: Springer.
- Sugai, G., & Horner, R. H. (2014). School-wide positive behavior support. In C. R. Reynolds, K. J. Vannest, & E. Fletcher-Janzen (Eds.), *Encyclopedia of special education: A reference for the education of children, adolescents, and adults with disabilities and other exceptional individuals* (4th ed., Vol. 1 pp. 2058-2060). Hoboken, NJ: Wiley.
- U.S. Department of Education. (2011). *30th annual report to congress on the implementation of the Individuals With Disabilities Education Act, 2008*. Washington, DC: U.S. Department of Education, Office of Special Education Programs.
- Waasdorp, T., Bradshaw, C. P., & Leaf, P. J. (2012). The impact of school-wide positive behavioral interventions and supports (SWPBIS) on bullying and peer rejection: A randomized control effectiveness trial. *Archive of Pediatric Adolescent Medicine*, 166, 149–156.
- Walker, H. M., Kavanagh, K., Stiller, B., Golly, A., Severson, H. H., & Feil, E. G. (1998). First Step to Success: An early intervention approach for preventing school antisocial behavior. *Journal of Emotional and Behavioral Disorders*, 6, 66–80. doi:10.1177/106342669800600201



**CONFERENCE CENTER**

**Nearby Fast/Casual Restaurants**

**SoHo Café**

1825 Connecticut Avenue, NW  
Washington, DC 20009  
Same building as conference center – entrance is on the street, between main 1825 entrance and Washington Sports Club.  
*Sandwiches, Salad Bar, Hot Food Buffet*

Within 1-2 blocks/0.1-0.2 miles  
3-5 minute walk:

**Glen's Garden Market**

2001 S Street, NW  
Washington, Dc  
*Sandwiches, Salads*

**Flippin' Pizza** 1745 Connecticut Avenue NW

Washington, DC 20009  
*Pizza*

**Bethesda Bagels**

1718 Connecticut Avenue NW  
Washington, DC 20009  
*Bagels, Sandwiches, Pizza*

Within 2-3 blocks/0.2-0.3 miles  
5-6 minute walk:

**La Tomate Cafe**

1701 Connecticut Ave NW,  
Washington, DC 20009  
*Casual Italian*

**Chipotle** 1629 Connecticut Avenue, NW

Washington, DC 20009 *Mexican*

**Subway**

1605 Connecticut Avenue NW  
Washington, DC 20009 *Sandwiches, salads*

Within 3-5 blocks/0.3-0.5miles  
6+ minute walk:

**Zorba's Cafe**

1612 20th Street NW Washington, DC 20009  
*Greek*

**Bareburger**

1647 20<sup>th</sup> Street NW  
Washington, DC 20009  
*American, Eco-minded, Beef, Veg & Wild Game Burgers, plus sandwiches, salads & side Burgers*

**BIBIBOP Asian Grill**

1516 Connecticut Avenue NW  
Washington, DC 20036  
*Asian*

**SweetGreen**

1512 Connecticut Ave  
Washington, DC 20036  
*Salads*



CONFERENCE CENTER

Nearby Sit-Down Restaurants

**Buca di Beppo**

1825 Connecticut Avenue, NW  
Washington, DC 20009  
In same building as conference center; entrance is on the street immediately to the left as you exit through the main entrance at 1825 Connecticut.  
*Italian*

Within 1 block/0.1 miles  
2-3 minute walk

**Ruth's Chris Steak House**

1801 Connecticut Avenue, NW  
Washington, DC 20009  
*American, Steakhouse*

**Banana Leaves**

2020 Florida Avenue, NW  
Washington, DC 20009  
*Asian, Sushi*

**Thaiphoon**

2011 S Street, NW  
Washington, DC 20009  
*Thai*

Within 1-2 blocks/0.1-0.2 miles  
2-3 minute walk

**City Lights of China**

1731 Connecticut Avenue, NW  
Washington, DC 20009  
*Chinese*

**La Tomate Bistro** 1701 Connecticut Avenue,  
NW Washington, DC 20009 *Italian*

**Bistro Bistro**

1727 Connecticut Avenue Northwest  
Washington, DC 20009  
*French*

**Bistro du Coin**

1738 Connecticut Avenue, NW  
Washington, DC 20009  
*French*

Within 2-3 blocks/0.2-0.3 miles  
6-8 minute walk:

**Sette Osteria**

1666 Connecticut Avenue, NW  
Washington, DC 20009  
*Italian*

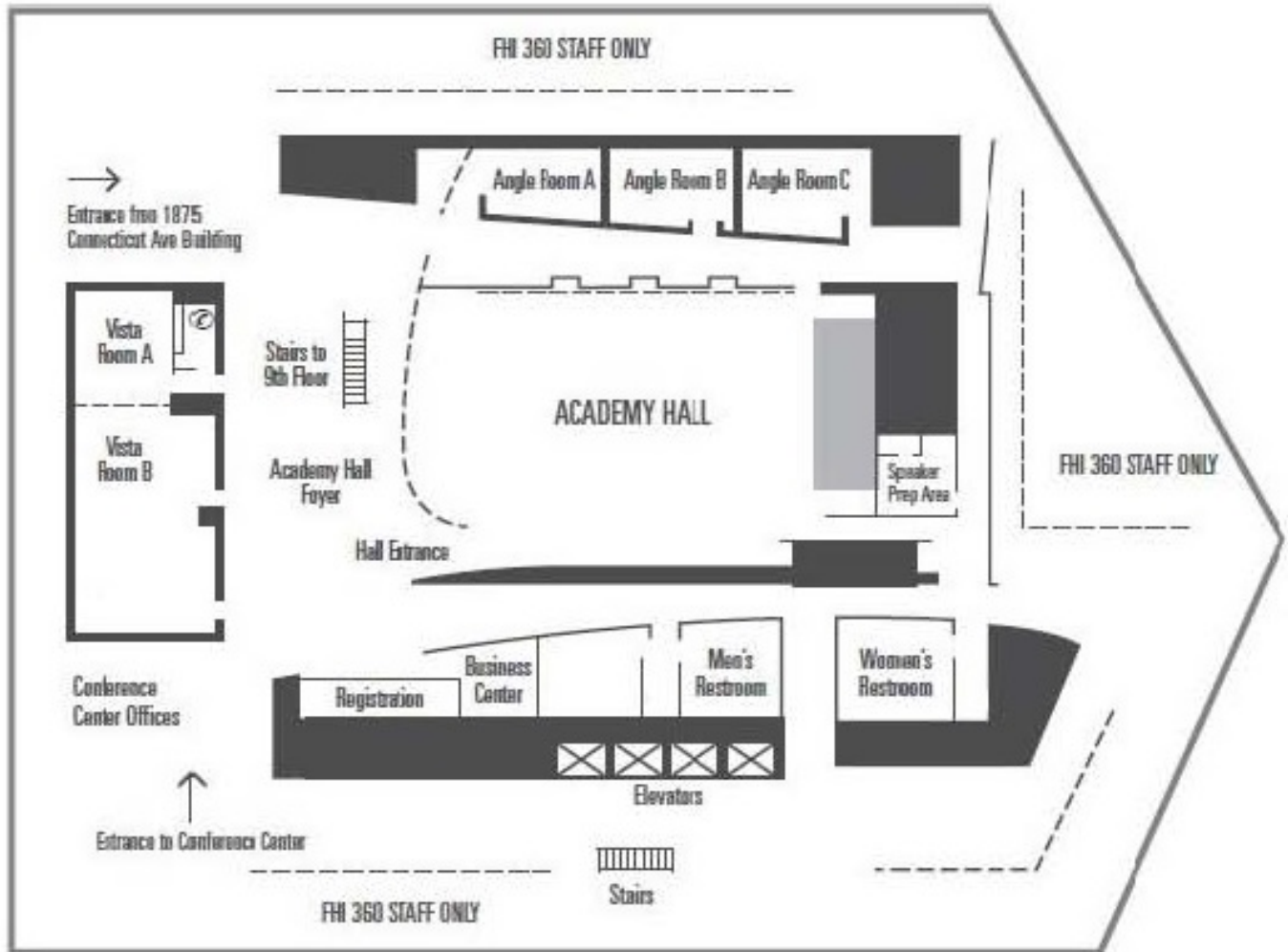
**Circa Cafe**

1601 Connecticut Avenue, NW  
Washington, DC 20009  
*American*

**Lauriol Plaza**

1835 18th Street, NW  
Washington, DC 20009  
*Mexican*

# FHI360 8<sup>th</sup> Floor Plan



# FHI360 9<sup>th</sup> Floor Plan

