



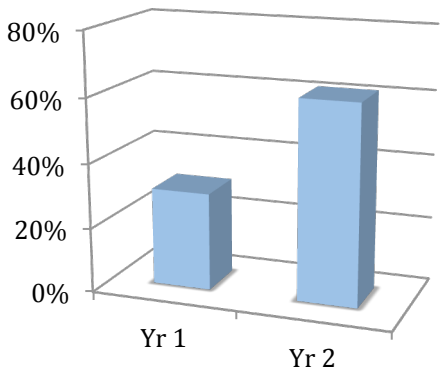
# Minnesota Department of Education State Professional Development Grant

Goal #2 focuses on our Part C State Systemic Improvement Plan (SSIP) so that infants, toddlers, and preschool children with disabilities will substantially increase their rate of growth in the acquisition and use of knowledge and skills by the time they exit Part C or transition to kindergarten.

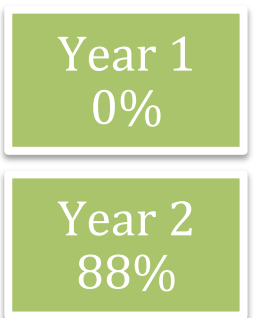


For more information and free resources, visit: [www.autismnavigator.com](http://www.autismnavigator.com) and <https://mn.gov/autism>

### Self-Ratings of Intervention Fidelity



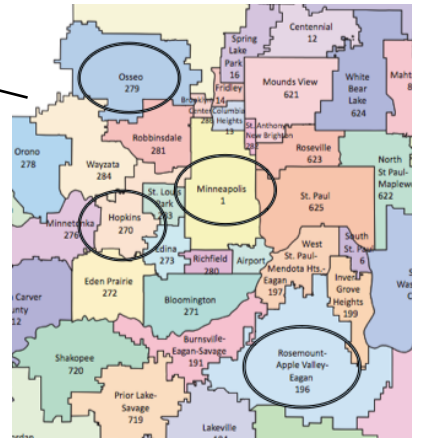
### Provider Use of Tool for Autism Red Flags



- #### What we do:
- 30 hour early intervention provider Autism Navigator course
  - Webinars
  - District meetings
  - Evaluation
  - Leadership meetings
  - Annual meeting with Dr. Amy Wetherby
  - Work plan development
  - Outreach to primary care community
  - Engaging with communities
  - Implementation research

2017: Princeton (Rum River) and St. Cloud added

**Participating Districts:**  
Hopkins • Minneapolis • Osseo • Rum River Co-op • Rosemount-Apple Valley-Eagan • St. Cloud



Developed by Sheri Stronach, Ph.D., CCC-SLP at the University of Minnesota 02/02/18. The contents of this infographic were developed under a grant from the US Department of Education. However, these contents do not necessarily represent the policy of the US Department of Education, and you should not assume endorsement by the Federal Government.